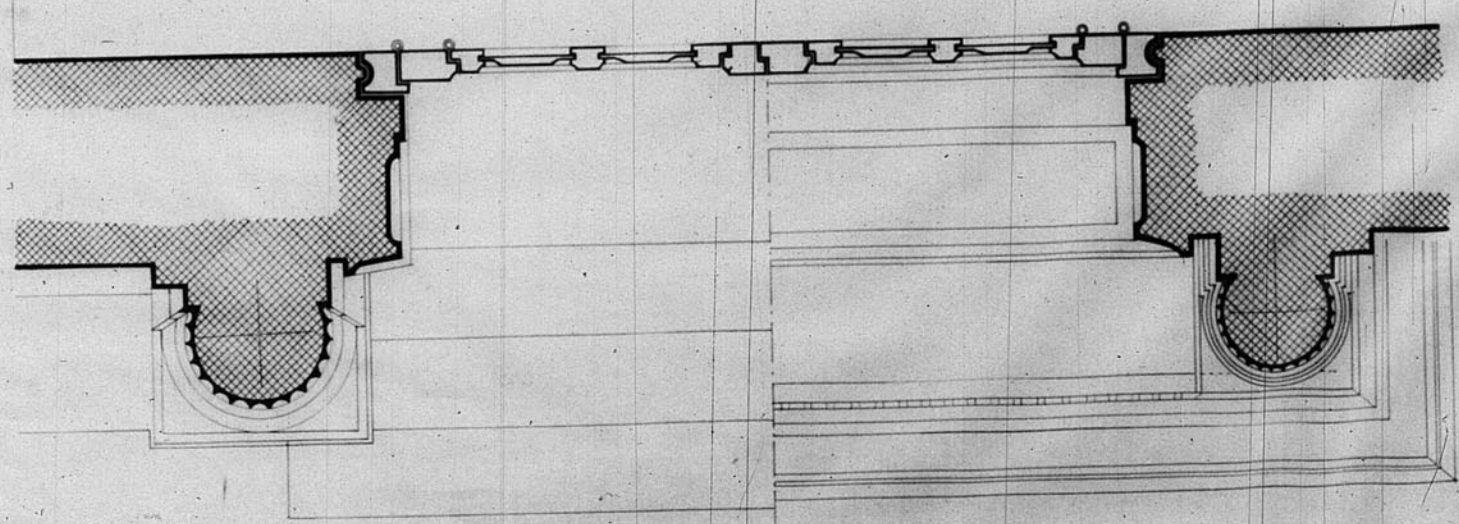
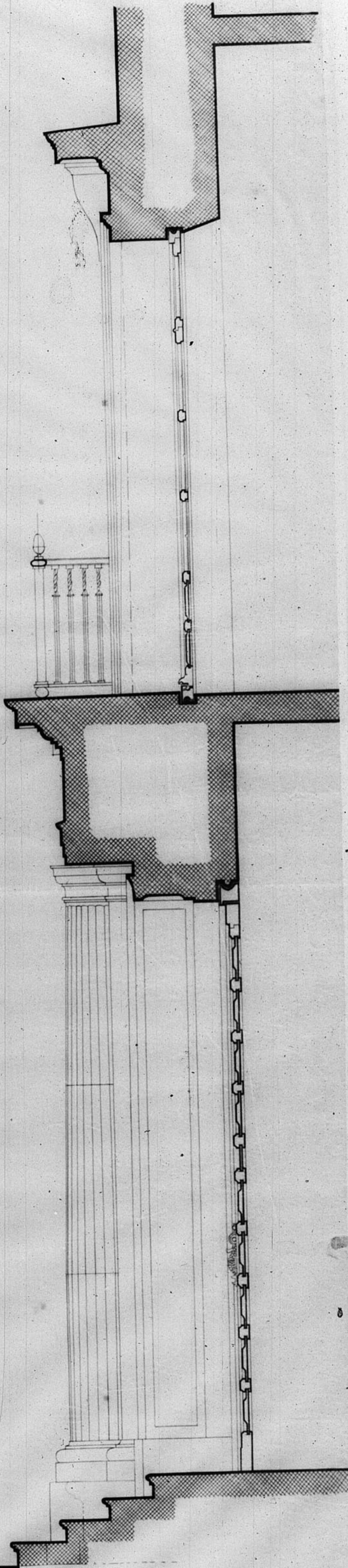
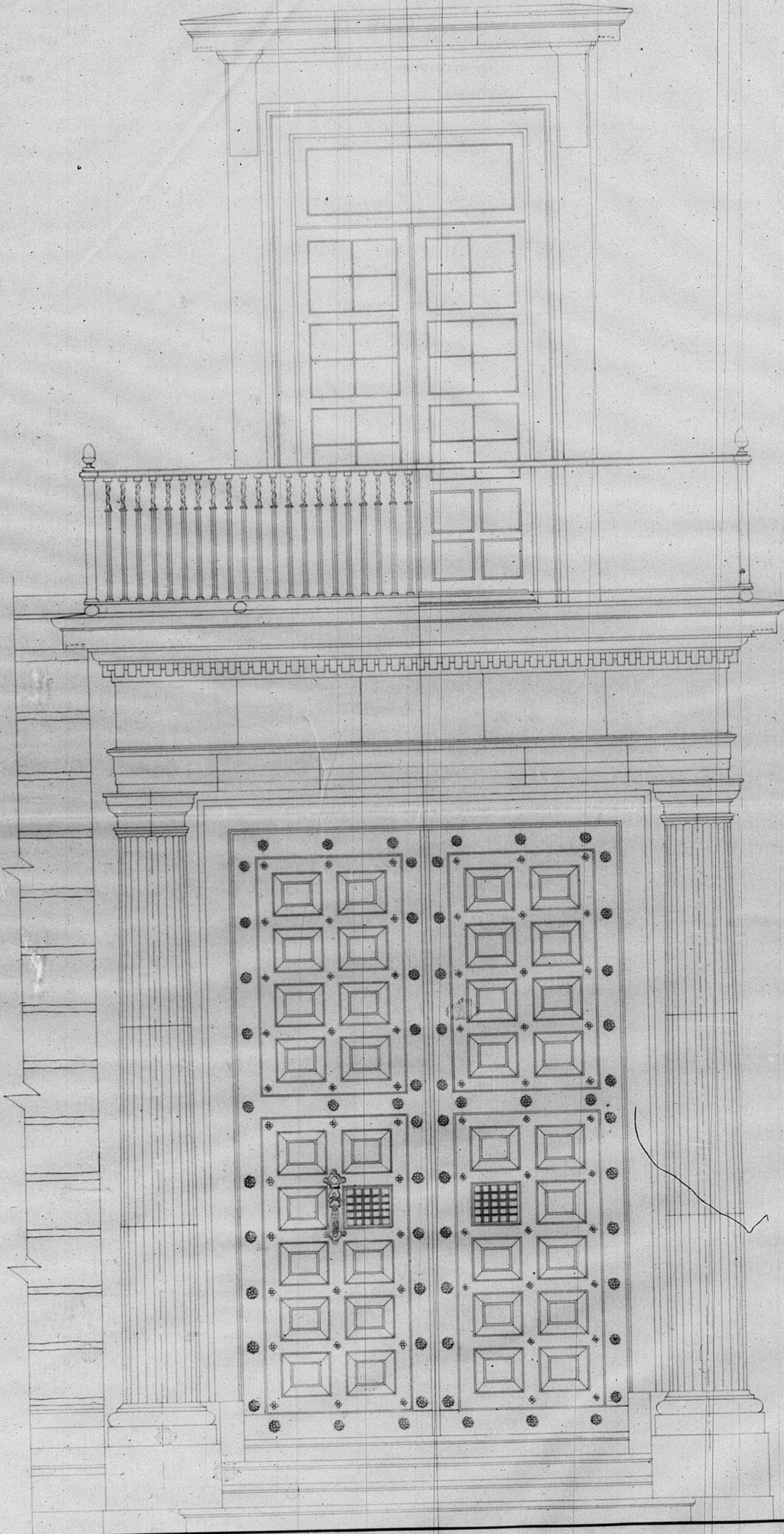
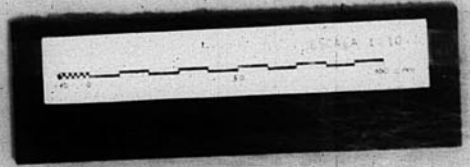


D.G.R.D. JEFATURA DE PROYECTOS
PROYECTO DE SEMINARIO CONCILIAR EN TERUEL

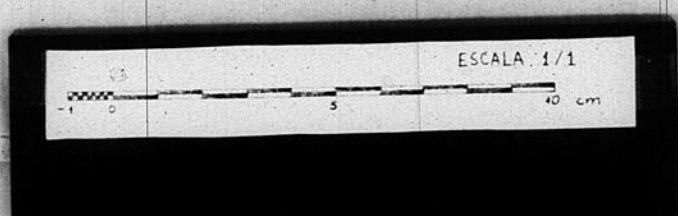
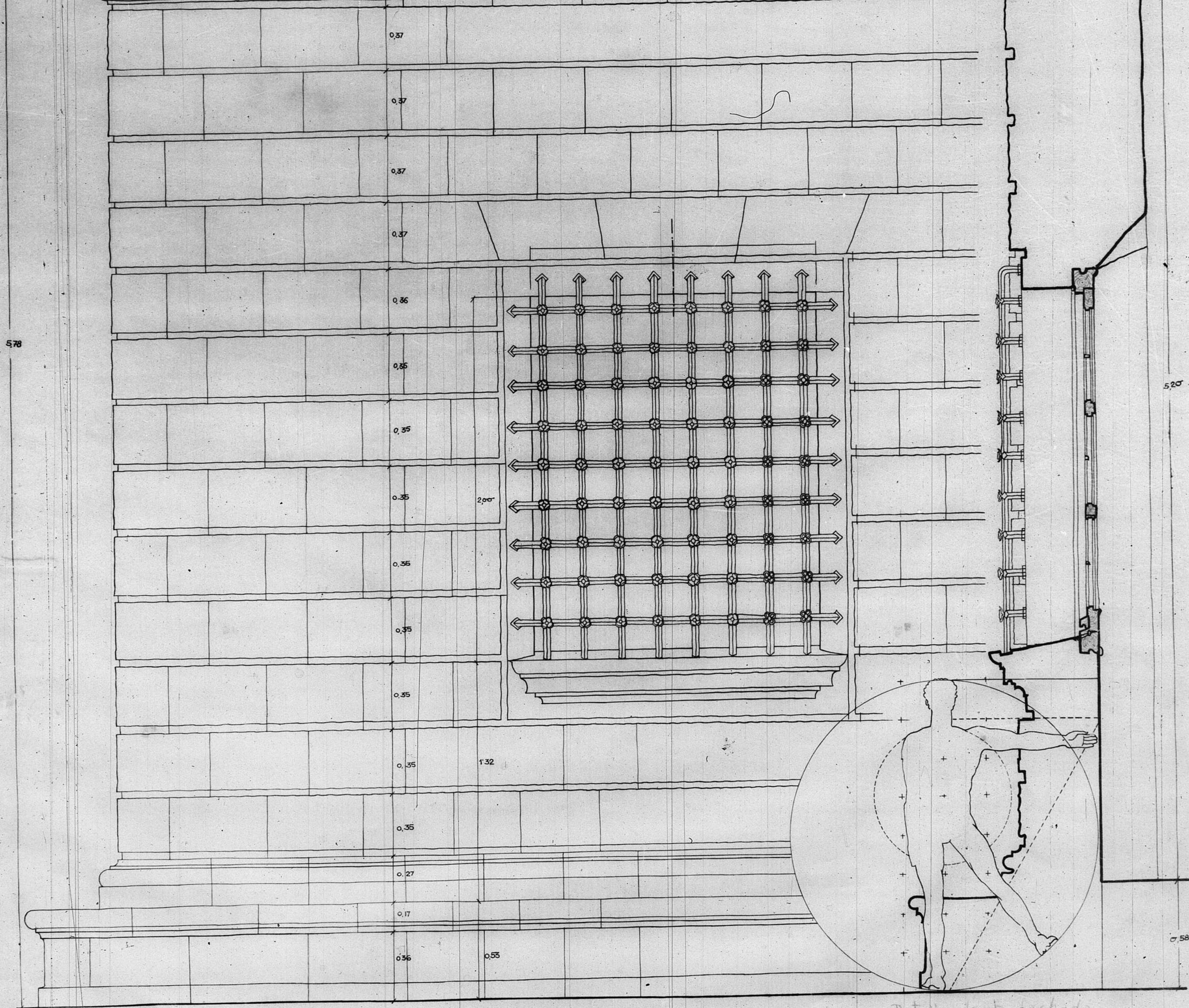
12.182



PLANO 4.º DE DETALLE DE LA PUERTA
PRINCIPAL. C/ CALA - 1.º.º.
BAJADA DE LA ESCALERA DE 1.º.º.
ELABOR. J. J. DE LA TORRE.



ESTE EDIFICIO



Detalle de la fachada principal