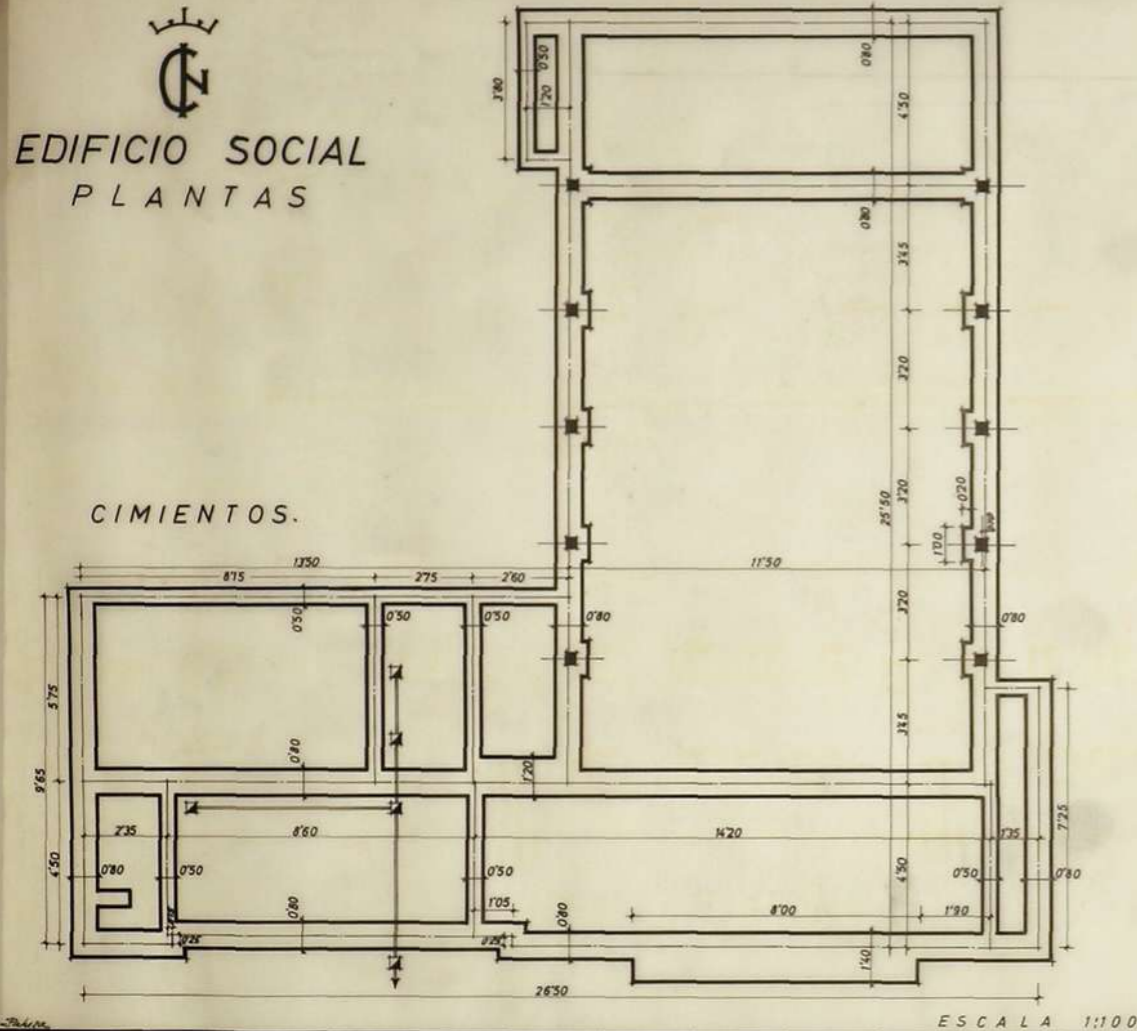


EDIFICIO SOCIAL
PLANTAS

CIMENTOS.

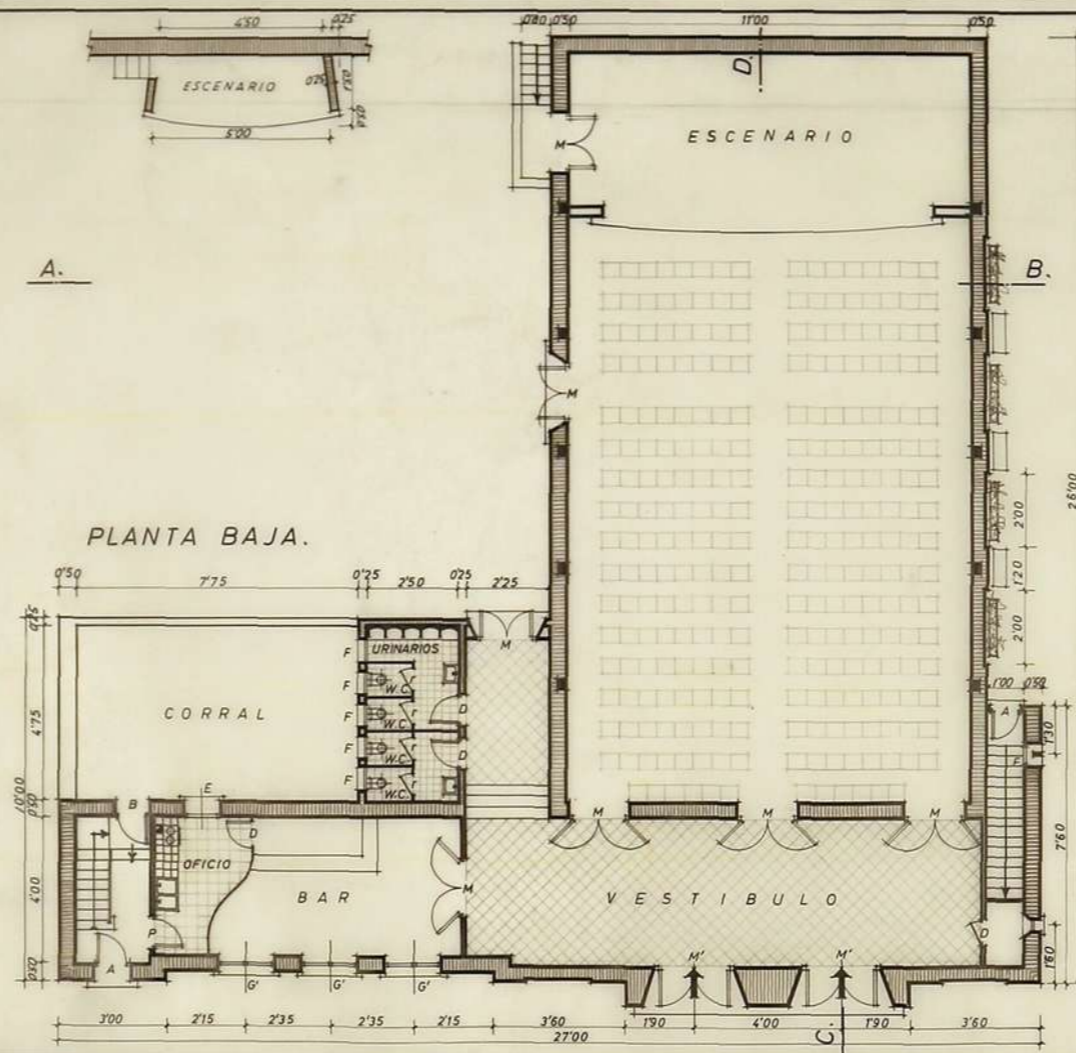


ESCALA 1:100

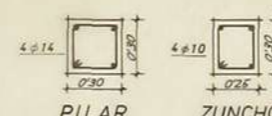


A.

PLANTA BAJA.



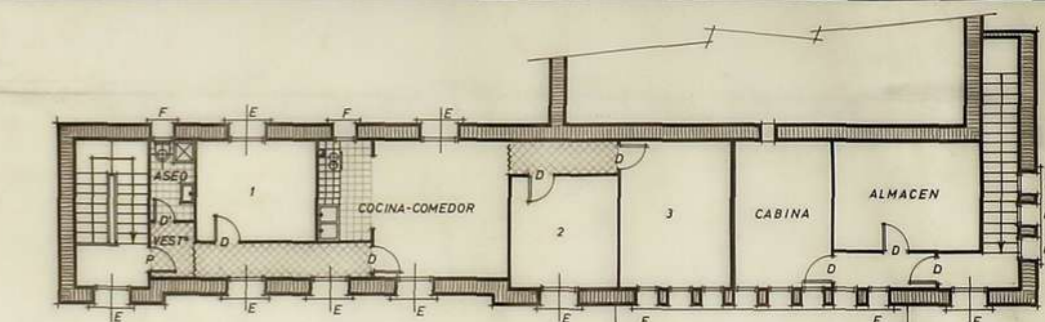
B.



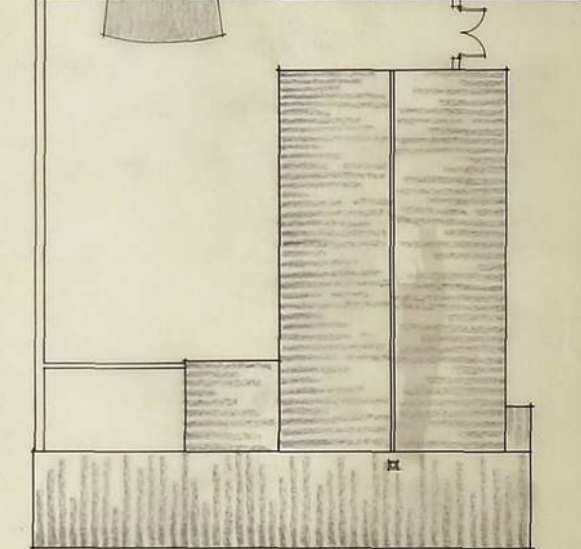
ENTRAMADOS.

ESCALA 1:200

PLANTA ALTA.



CUBIERTAS.



A.43447-36

ZARAGOZA, MARZO DE 1963.
M. M. M.
ARQUITECTO