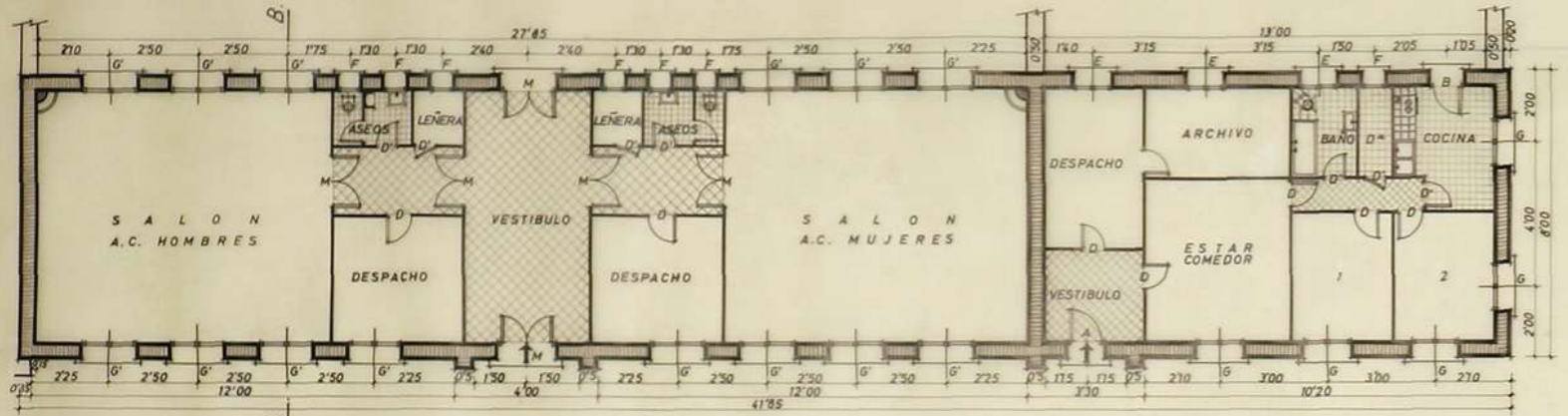


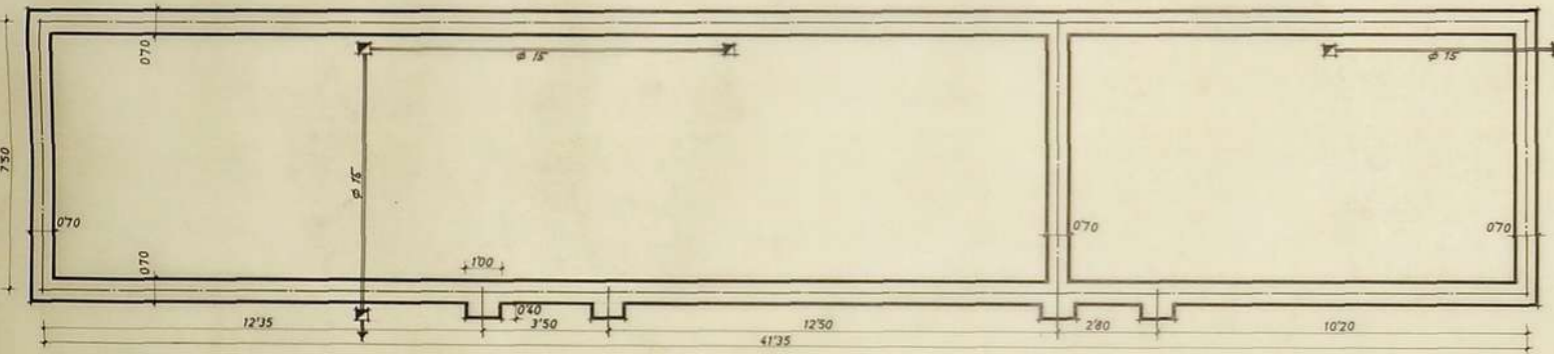


RECTORIA Y LOCALES DE ACCION CATOLICA.

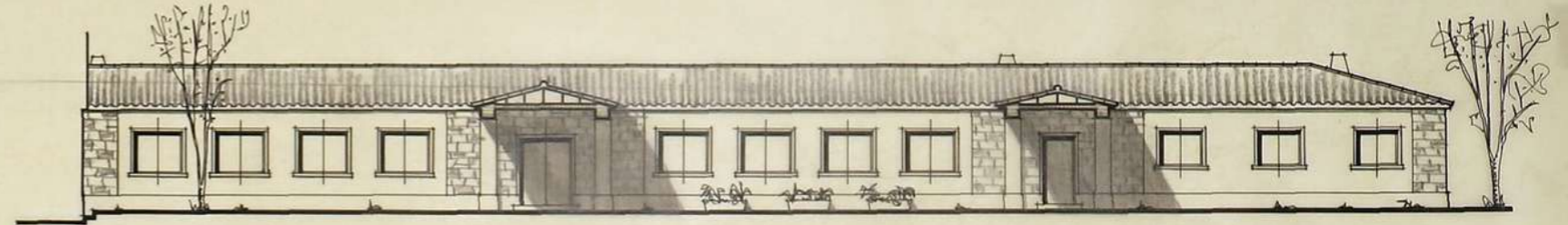


PLANTA.

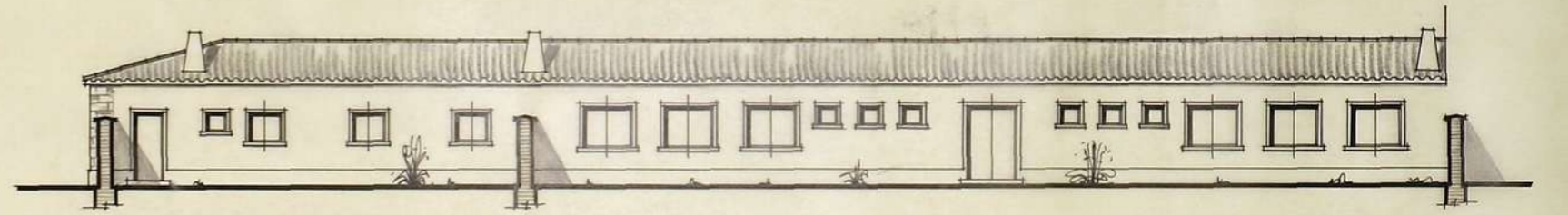
ESCALA 1:100



CIMIENTOS.



FACHADA PRINCIPAL.



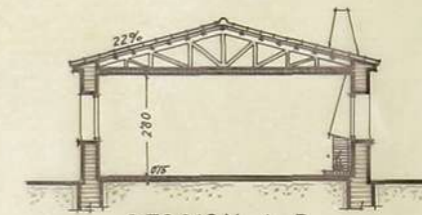
FACHADA POSTERIOR.



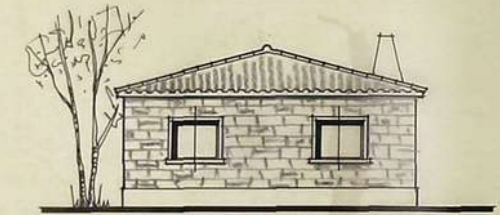
ENTRAMADOS.

ESCALA 1:200

CUBIERTAS.



SECCION A. B.



FACHADA LATERAL.

ZARAGOZA, MARZO DE 1963.

Maximiliano
 ARQUITECTO
 DE ARQ.

Plano del Portiño sustituido