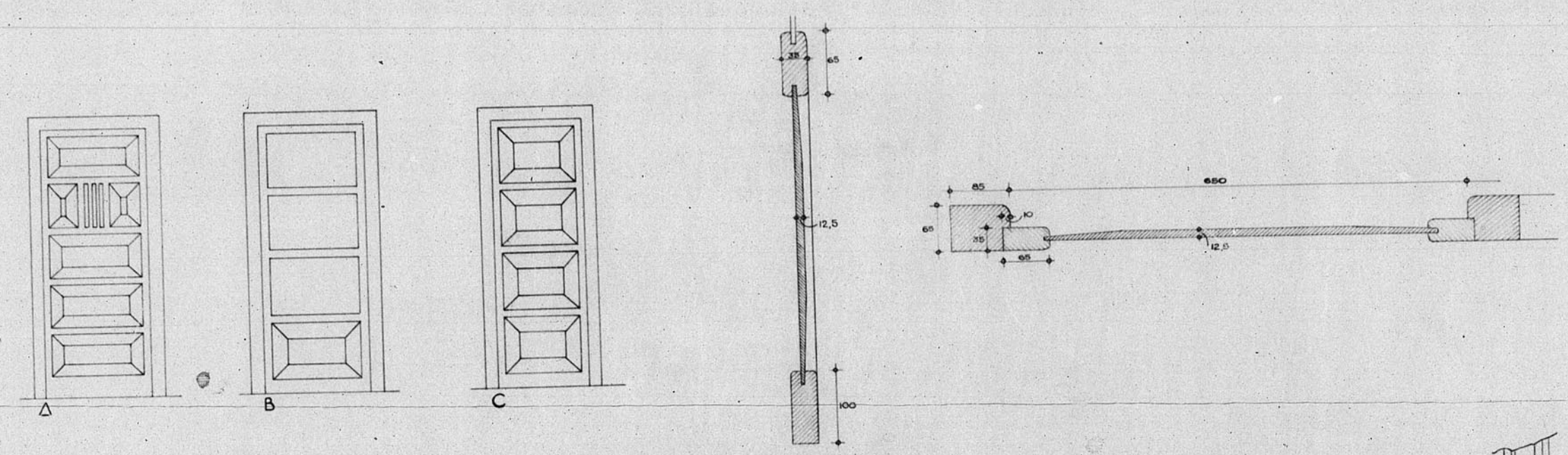
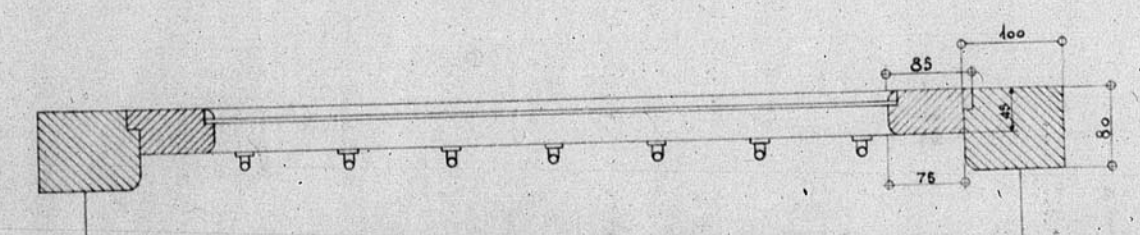
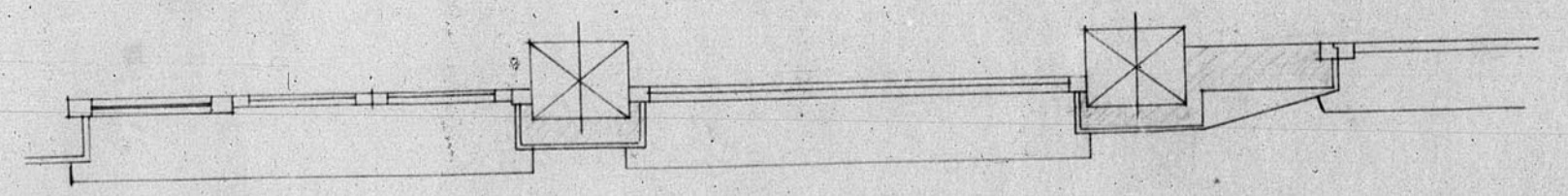
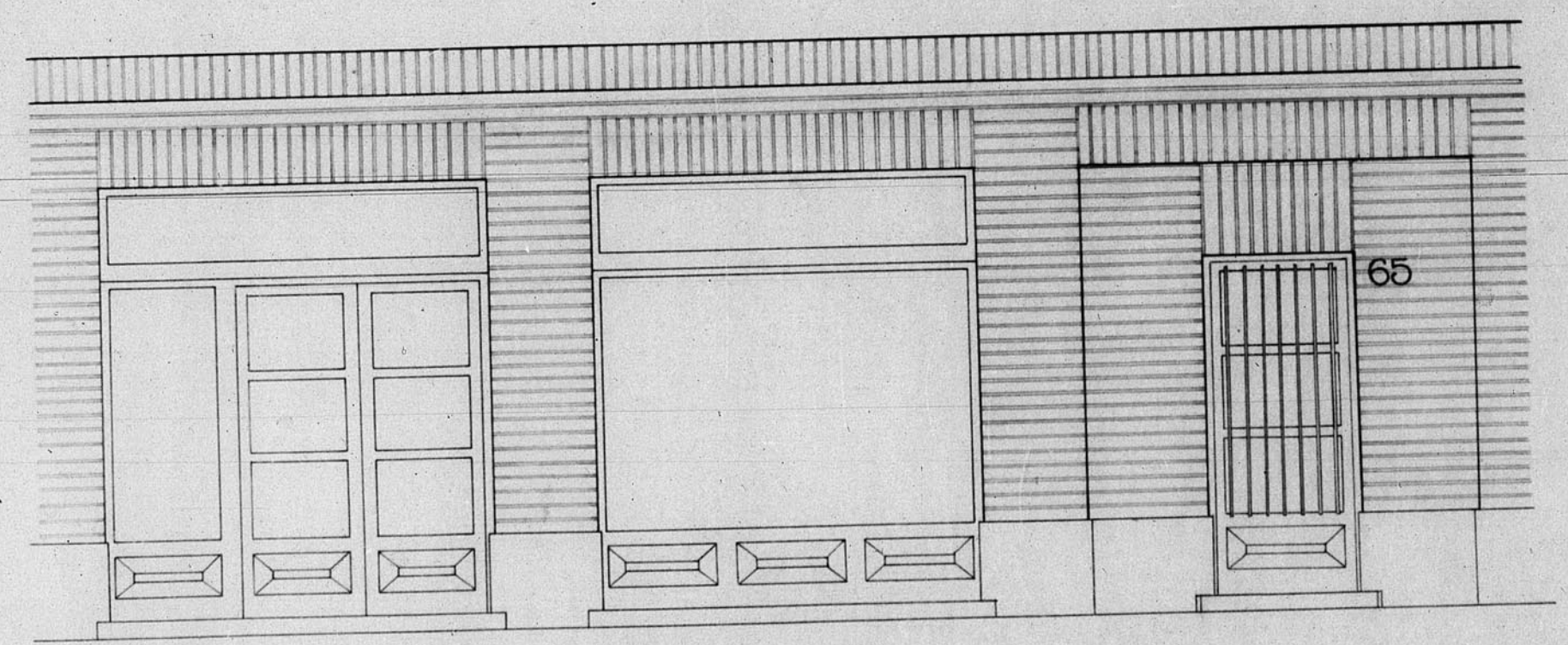
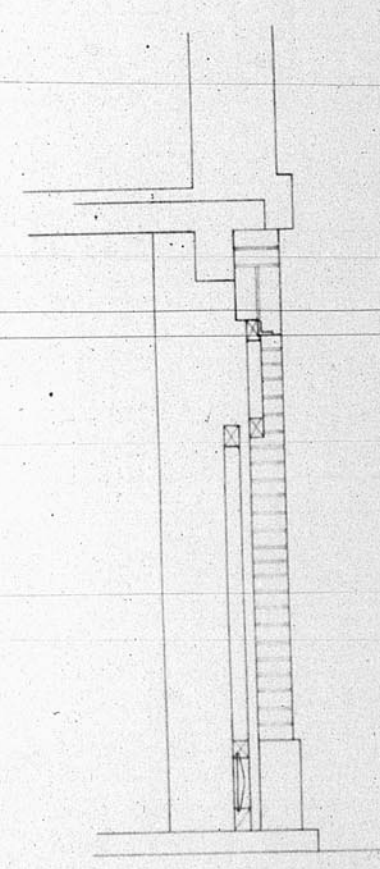
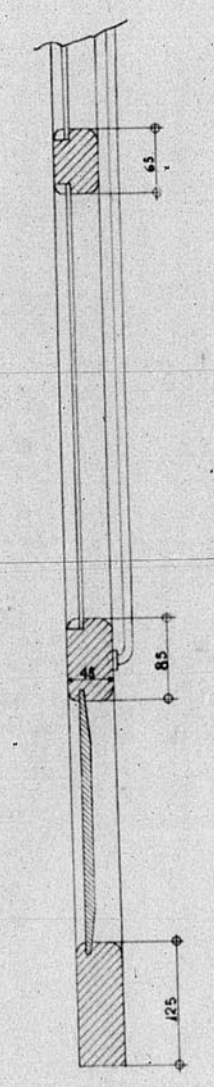


12.212

Dirección General de Regiones Devastadas
Arquitectura
Bloque de viviendas Calle San Francisco Ceruel.
Escala 1:25
Carpintería



Escala 1:5



Ceruel 10 de Marzo de 1940
El Arquitecto

Hej - a - Jla

CTH-501

Número de Hoja 70

ESCALA 1:1