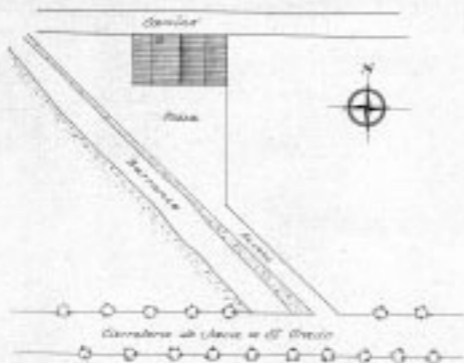


*Proyecto
de Casa. Anclamiento para
Albella, y Tinova (Algeria)*



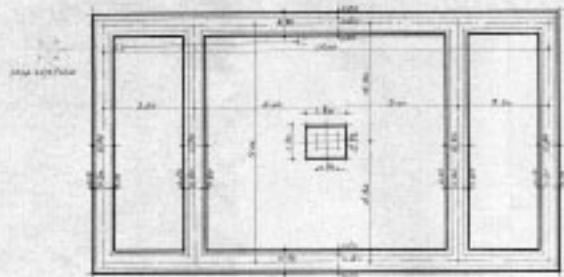
Implazamiento

ESCALA 1:200

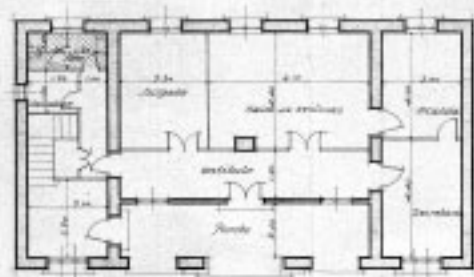


Algeria, Mayo 1924
E. Argenteo

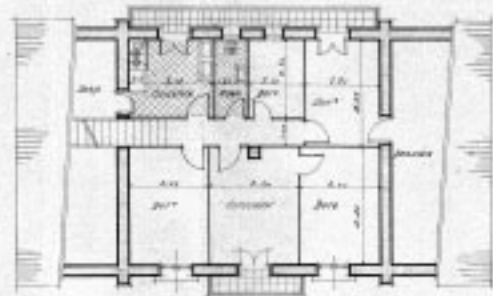
Argenteo



Planta de cimentor y sancuniento

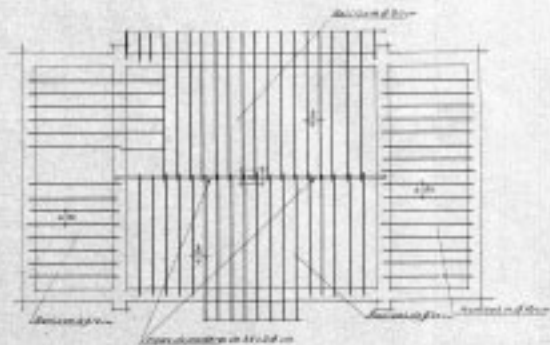


Planta baja

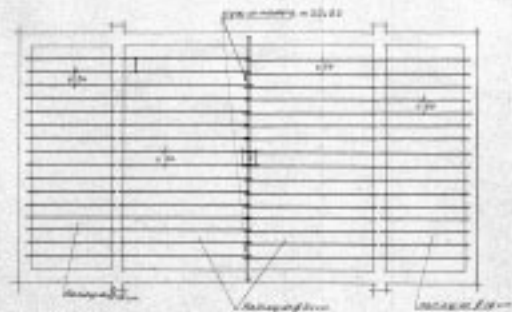


Planta 1ª

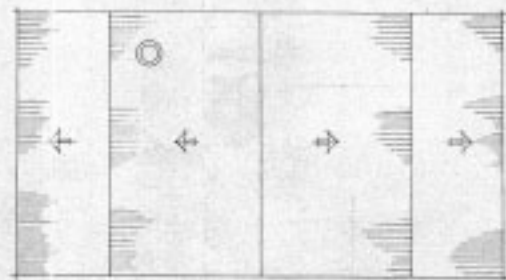
Escala 1:100



Planta de entramado de piso



Planta de entramado de cubiertas



Planta de cubiertas

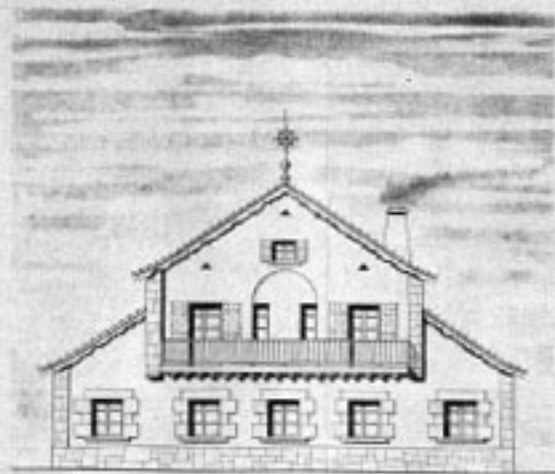
COLEGIO CENTRAL
DE ARQUITECTOS
DE VILANOVA
VILANOVA

Agencia de arte y
de arquitectura

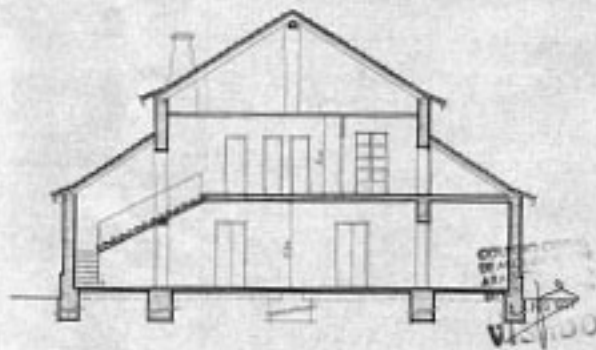
M. A. ...



Fachada S.



Fachada N.



Sección.

Escala. 1:100

Escuela de Arquitectura

M. G. ...