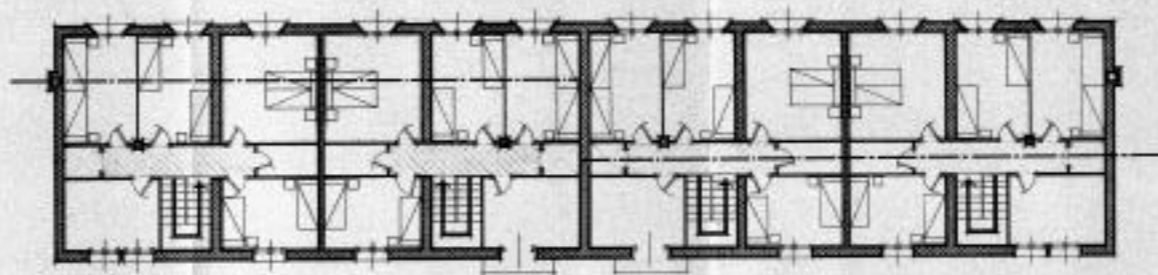
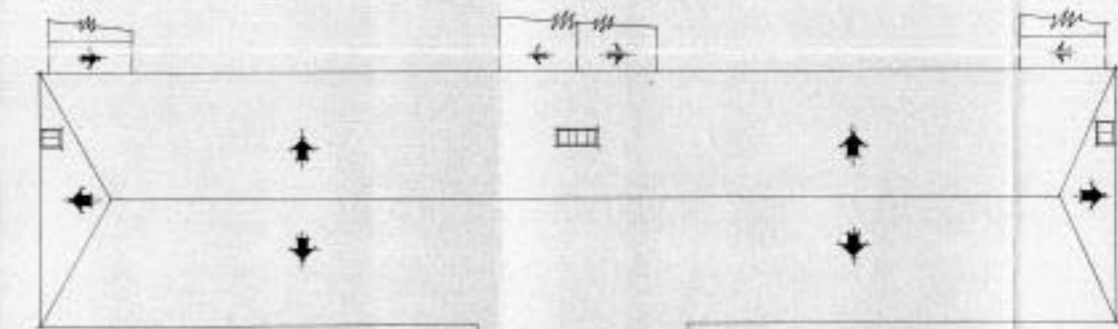


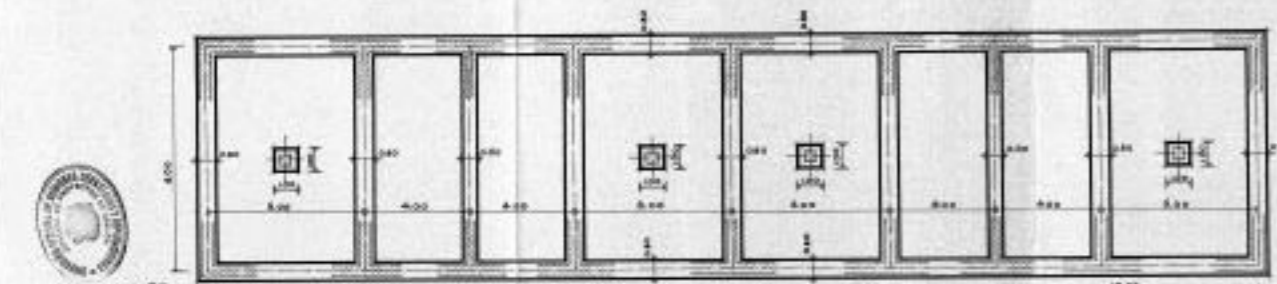
PLANTA BAJA



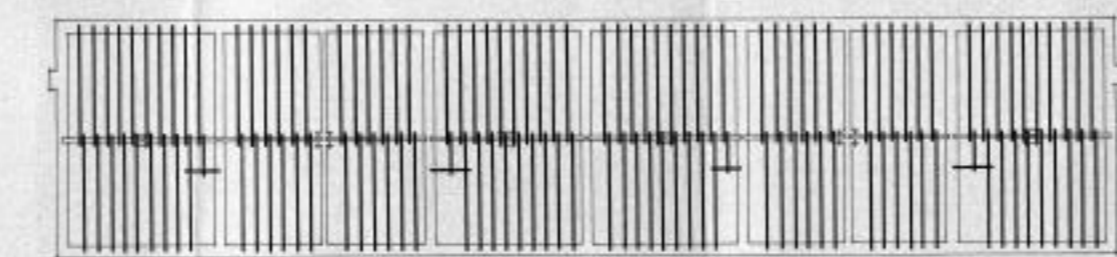
PLANTA 1º



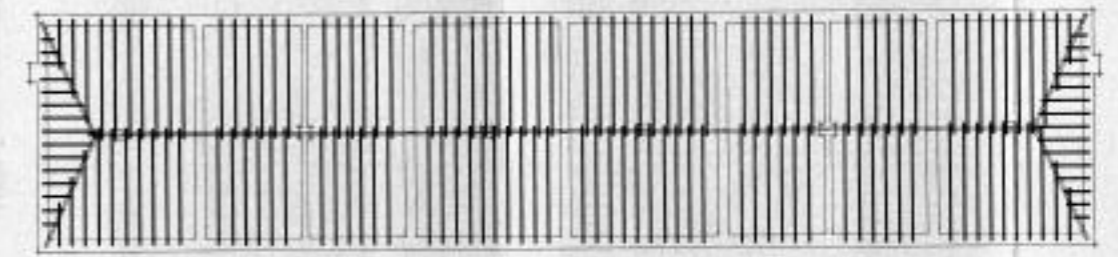
CUBIERTAS



CIMENTOS



ENTRAMADOS PISO



ENTRAMADOS CUBIERTA



*Manuel...*  
Arquitecto





ALZADO PRINCIPAL



ALZADO POSTERIOR



*U.P. Manila*  
*1920*



ALZADO PRINCIPAL



ALZADO POSTERIOR



*Arce*  
*1912*