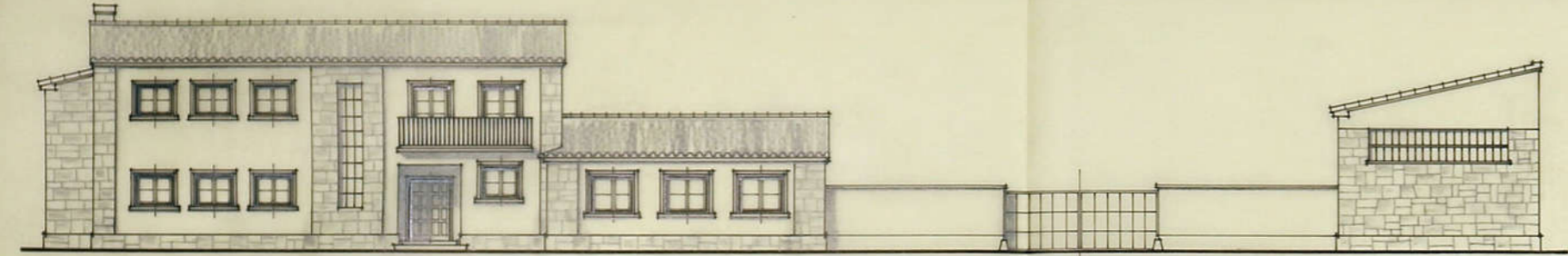


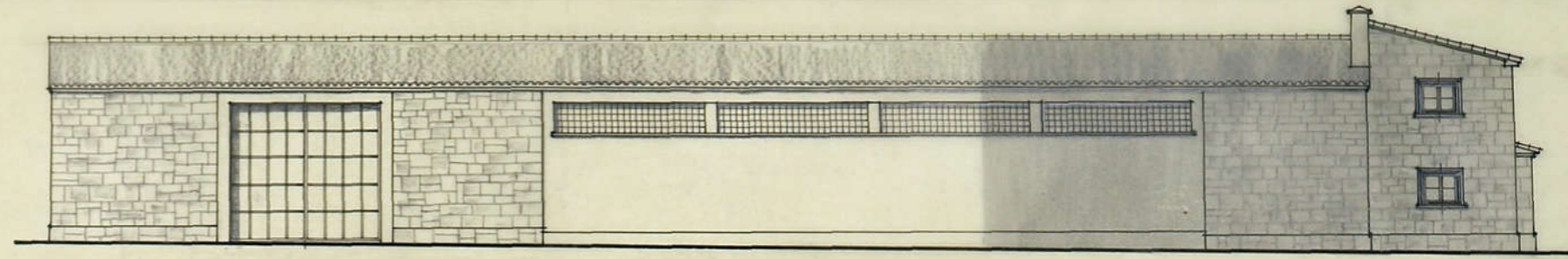


# CASA-ALMACEN DE LA HERMANDAD SINDICAL

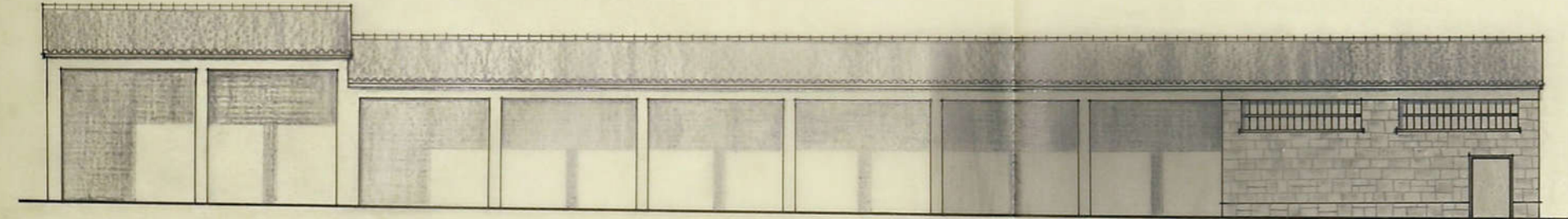
A. 43449-32



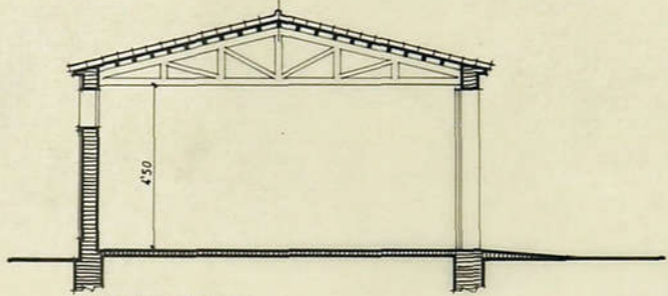
FACHADA PRINCIPAL



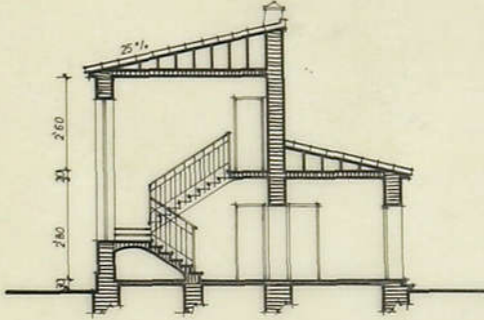
FACHADA LATERAL



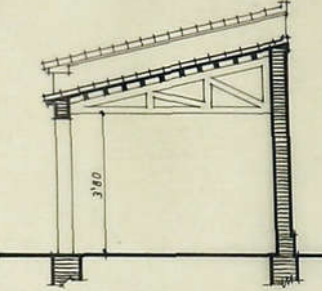
FACHADA DEL CUBIERTO



SECCION C D



SECCION A B



SECCION E F

ZARAGOZA, MARZO DE 1963.

*Mesones*  
ARQUITECTO

