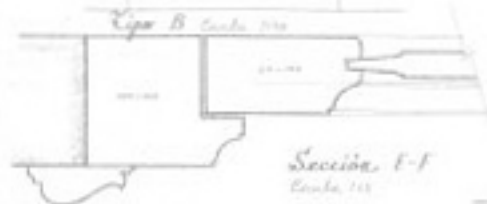


L

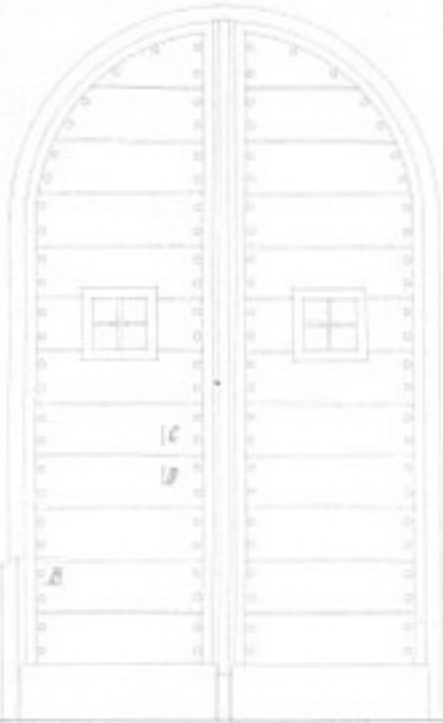


F



Tipo B Carta 116

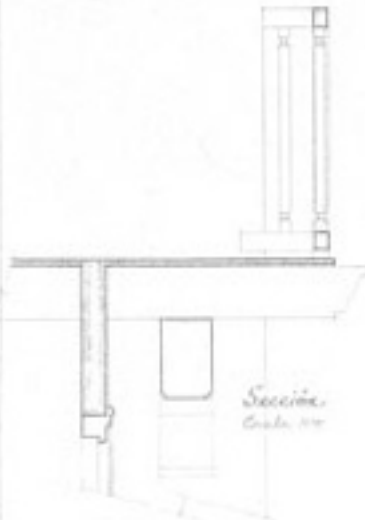
Sección. F-F
Carta 115



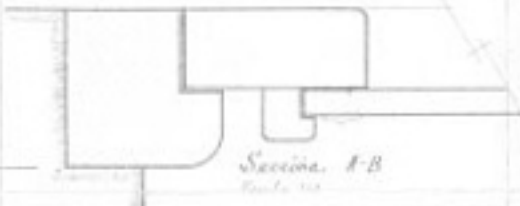
F

B

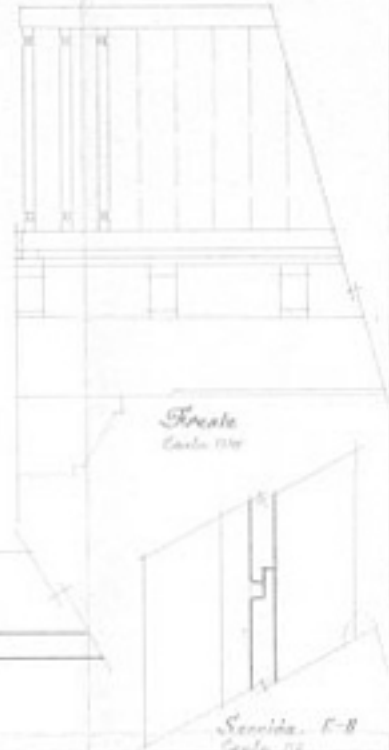
Tipo A Carta 114



Sección
Carta 117

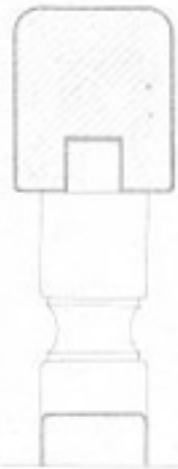


Sección. A-B
Carta 118



Frente
Carta 119

Sección. E-B
Carta 120



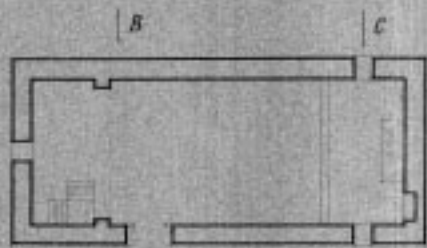
Detalle
Carta 121



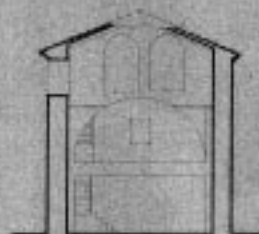
Arquitecto
Miguel Ángel de los Ríos



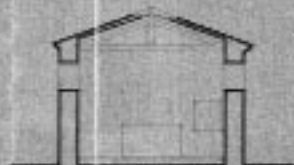
*Iglesia de Lienas
Estado Actual.*



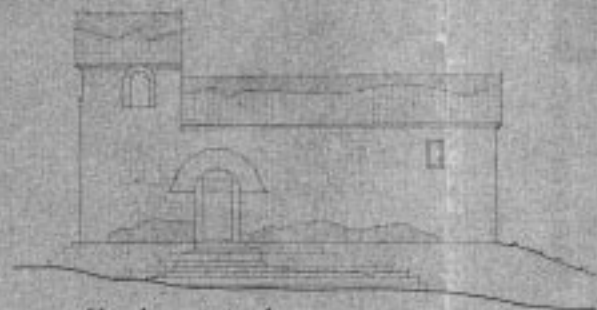
Planta.



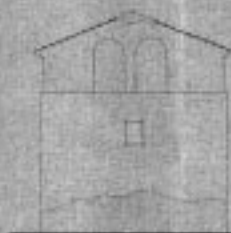
Sección A-B



Sección C-D



Vista principal.



Vista lateral.

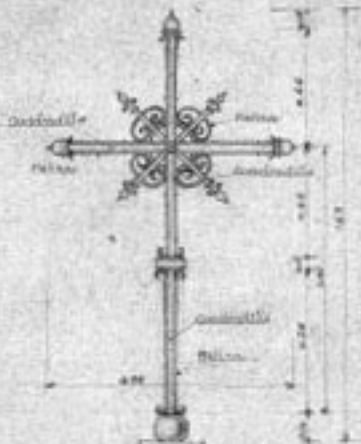
Escala. 1/100



*Ensignera, Agosto de 1887
D. Legido*



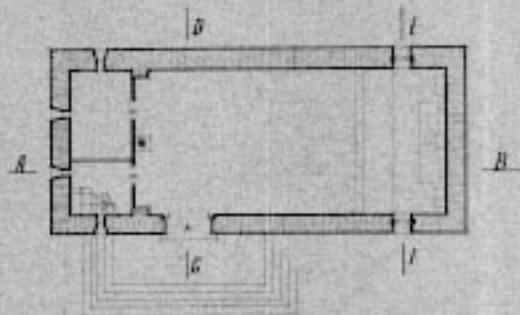
IGLESIA A LIENAS



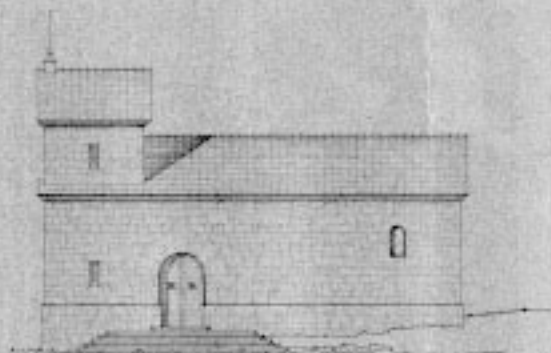
Escala 1/50



*Iglesia de Lleras
Reconstrucción.*



Planta.

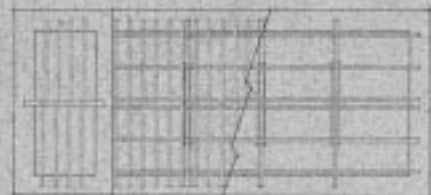


Vista principal.

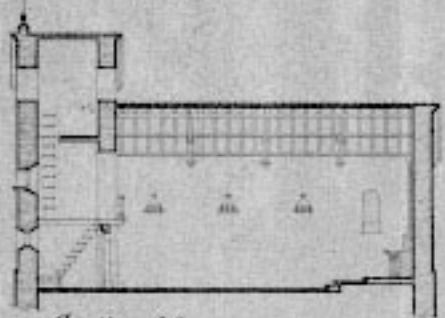


Vista lateral.

*Requisito de 1917
El Arquitecto*

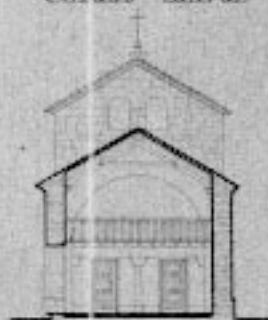


Entrecanto de cubierta.

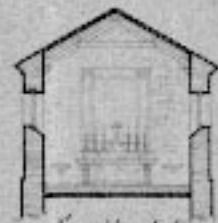


Sección A-B

Escala. 1/100

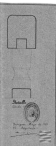
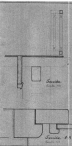
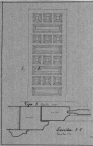


Sección C-D



Sección E-F





A small circular stamp or logo is located in the bottom right corner of the page, containing some illegible text.