



WM

GENERAL MASTRO

TARAPACA



PLANTA BAJA



PLANTA 1A

ESTADO ACTUAL

ESTADO 1980
 Oficina Ejecutiva del
 INC. - Tarapaca

The stamp is circular and contains the text 'Oficina Ejecutiva del INC - Tarapaca' around the perimeter. In the center, there is a signature and the date '1980'.





Front elevation



Section

Architectural Firm and City

Architectural Firm

City, State

Scale: 1/4" = 1'-0"





FIGURE 10-10

SECTION OF A RECTANGULAR OBJECT



FIGURE 10-11

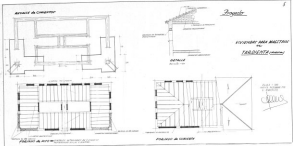


FIGURE 10-12

Section of a Rectangular Object

Section of a Rectangular Object

NY



WV



FLOOR 1

- Office 101
- Office 102
- Office 103
- Office 104



FLOOR 2





ELEVATION



SECTION

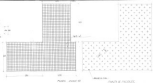


WM

ANSWER 1
QUESTION 1



ANSWER 2
QUESTION 2



ANSWER 3
QUESTION 3



QUESTION



Handwritten signature or initials.

