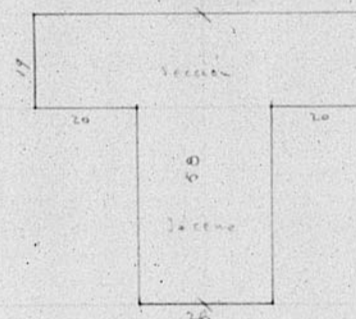


Tenjado de pisa

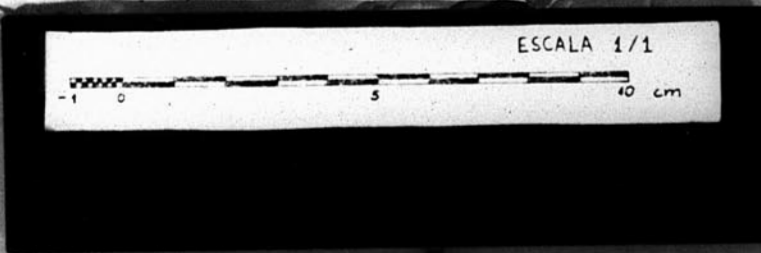


Fronte

Sección

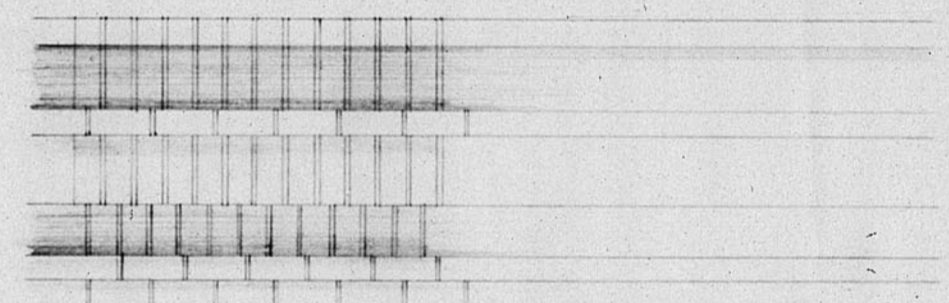
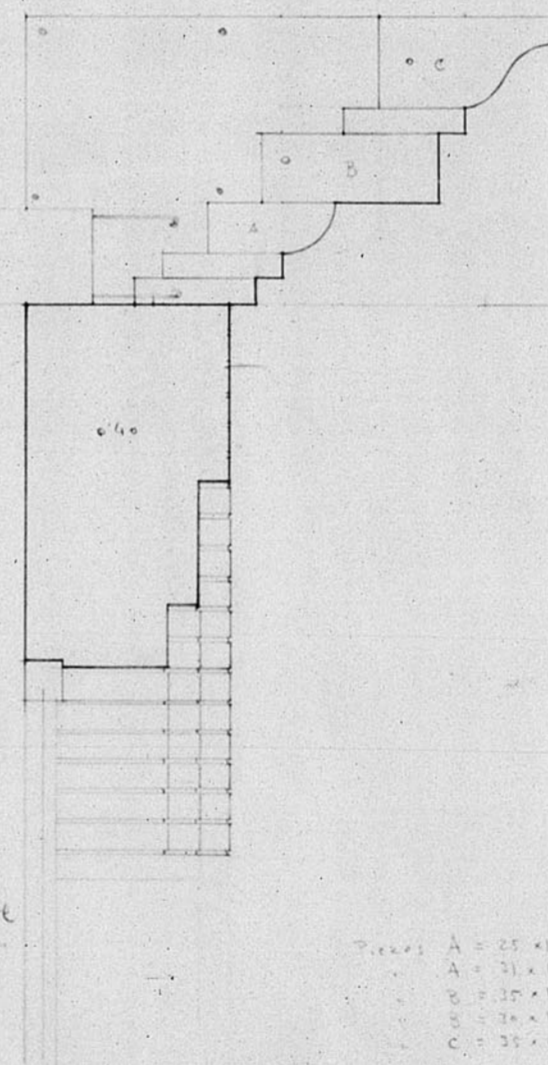
0.52

← 0.67 →



147

13.943



14 m² de cemento
 Sándwich 10 labella por m²
 Trazado 8

Piezas: A = 25 x 10 x 5
 B = 15 x 10 x 5
 C = 10 x 10 x 5

87
 44
 200

33
 44
 16
 60