

13.251

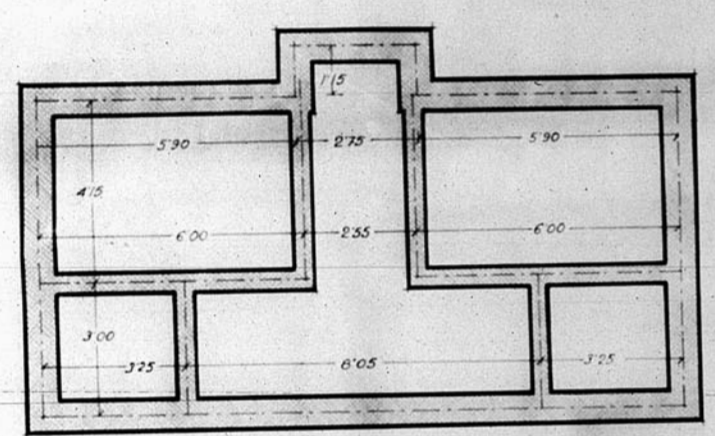
Dirección General de Regiones Devastadas
 Oficina de Proyectos de la
 Región Aragonesa

Localidad: Pn.
 Consuel
 Ayuntamiento

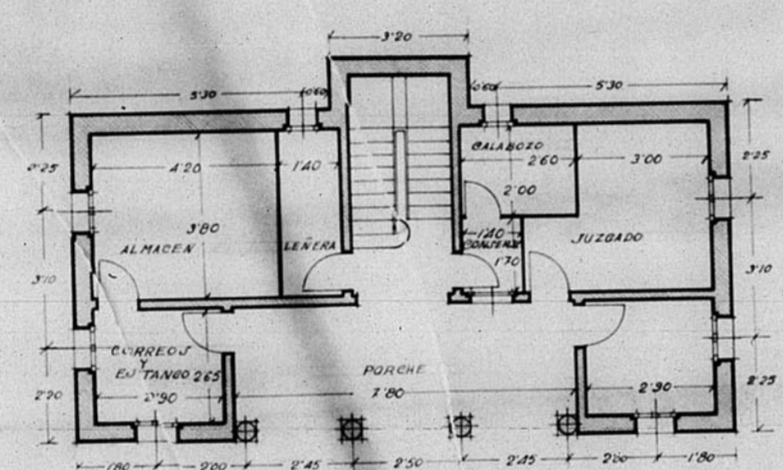
Plano	Coberta
PLANTA CIMENTOS	1:100
" " CUBIERTA Y ENTAMADO	" "
" " BAZA	" "
" " PRIMERA	" "
FACHADA PRINCIPAL	" "
" " LATERAL	" "
SECCION A-B	" "
" " C-D	" "

El Inspector Jefe
 Consuel, Octubre 1944
 El Arquitecto
[Signature]

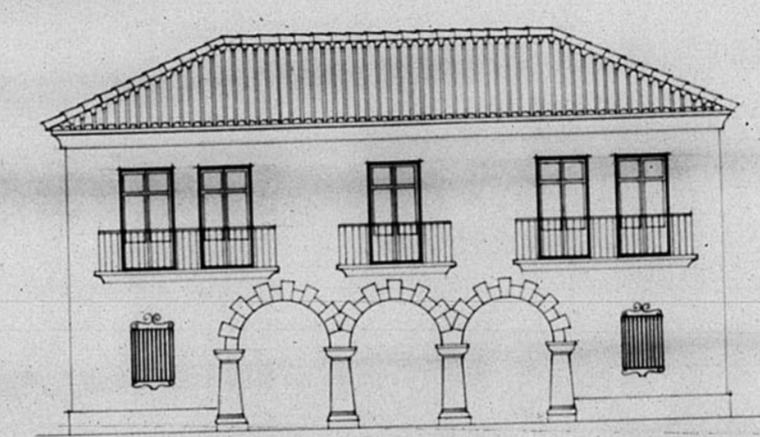
Modificaciones: Usados



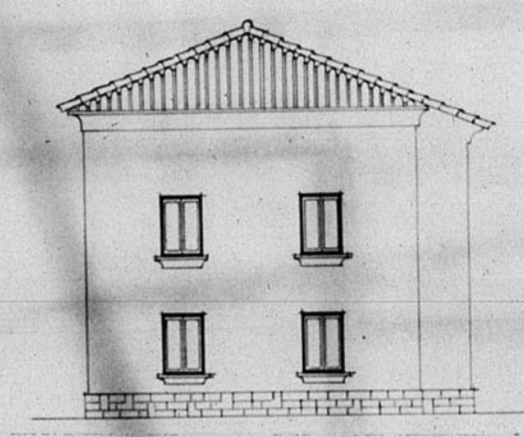
Planta Cimientos



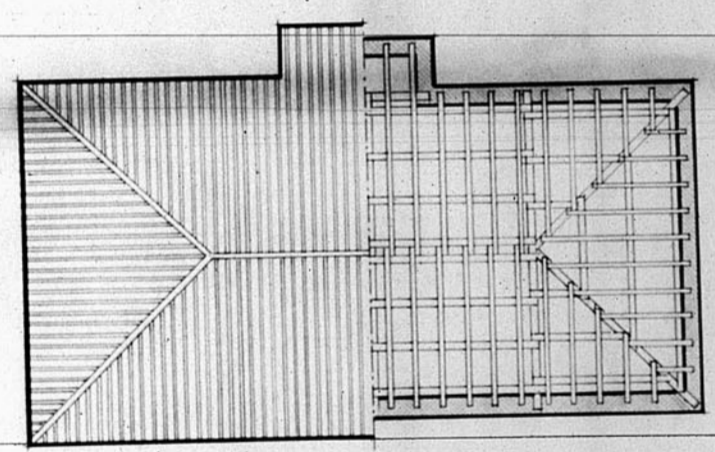
Planta baja



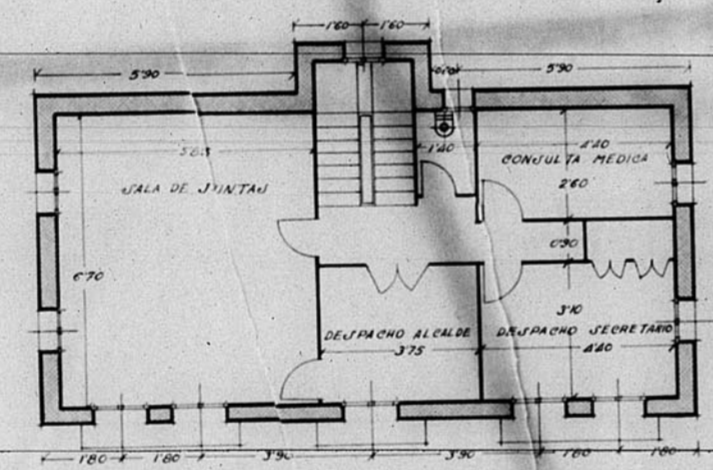
Fachada principal



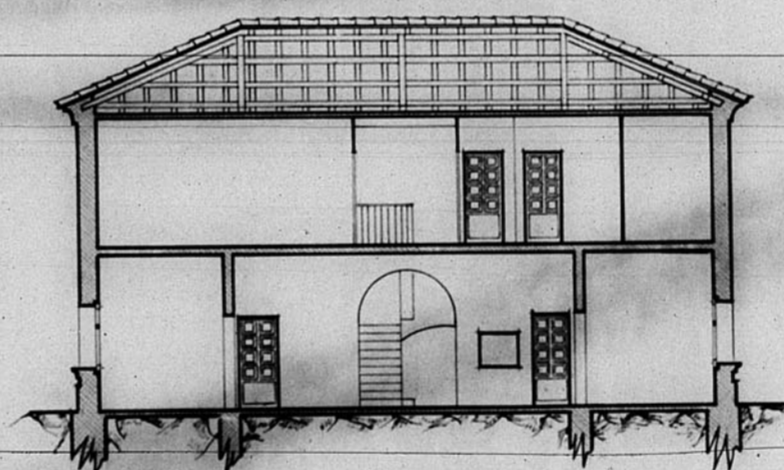
Fachada lateral



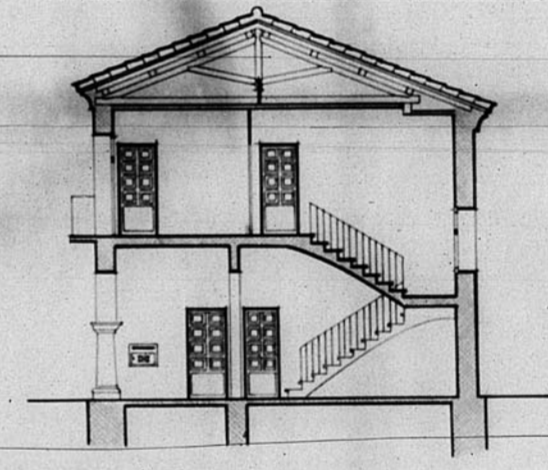
Cubierta y Entramado



Planta primera



Sección A B



Sección C D

