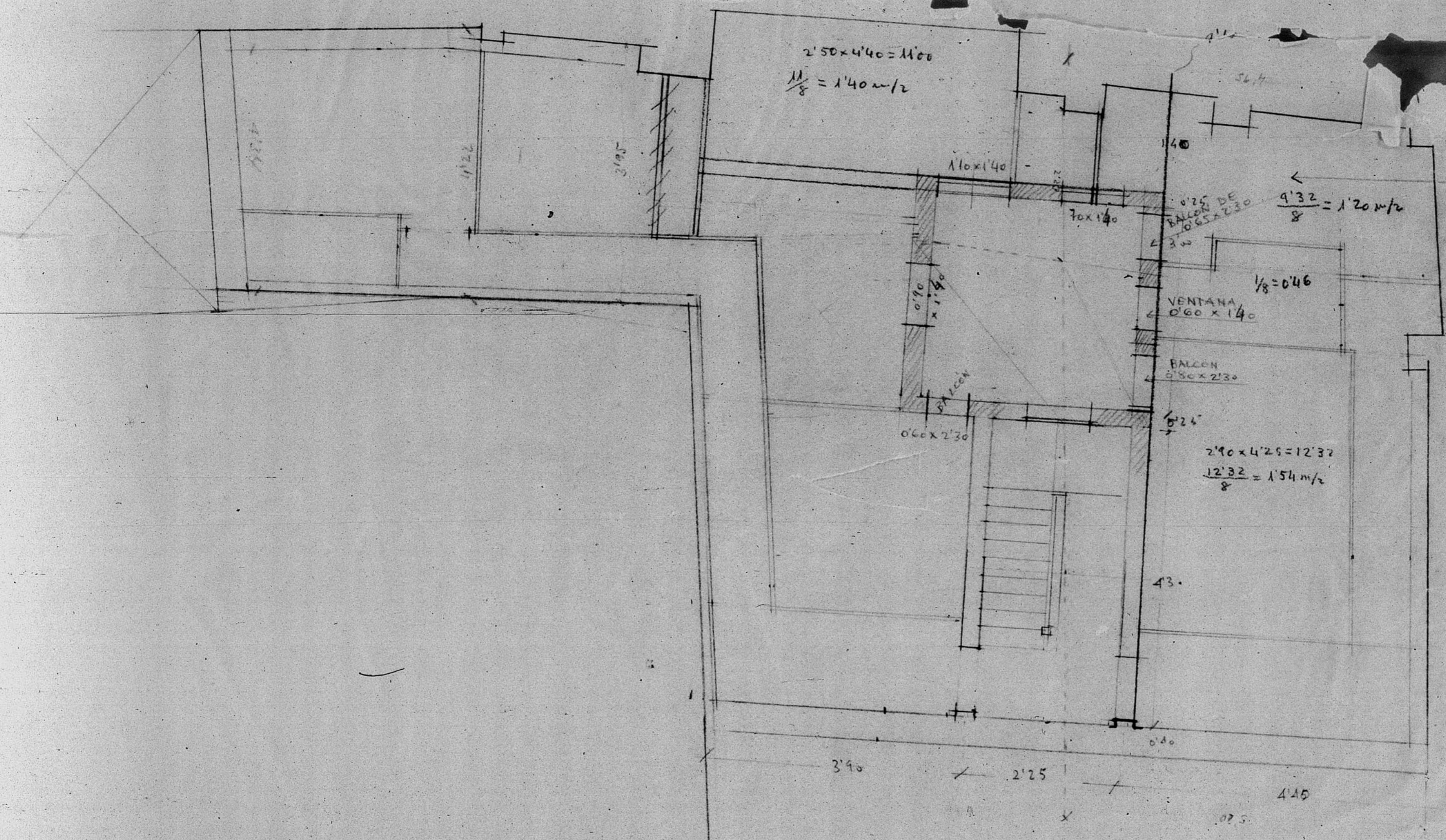


13836

13836

18  
212  
210  
51

1/2 pu plant  
1/2 pu  
1 pu  
1 plant



2.50 x 4.40 = 11.00  
11/8 = 1.40 m/2

9.32 = 1.20 m/2

3.90 x 2.20 = 8.58  
1.00 x 1.50 = 1.50  
10.08  
0.76  
9.32

2.90 x 4.25 = 12.32  
12.32 = 1.54 m/2

8.0  
6.0  
6.5  
20.5  
4.5

4.273 m<sup>2</sup>

4.40  
2.15  
2.95  
10.60

