

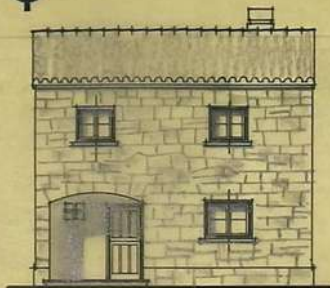


Vivienda Colono Ejido

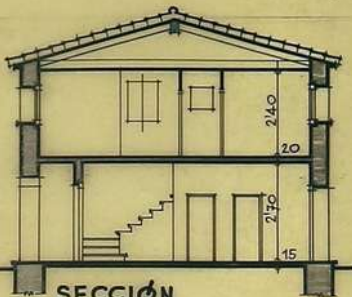
ESCALA 1:100

D

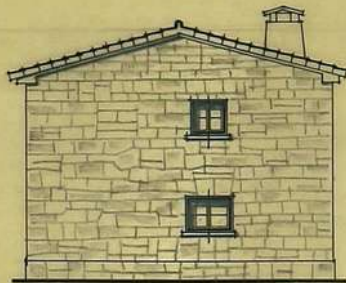
metros u.	10
centímetros	3
milímetros	4
БГЧИЕВО	



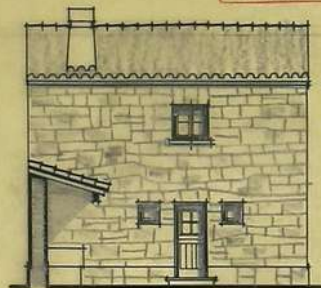
FACHADA



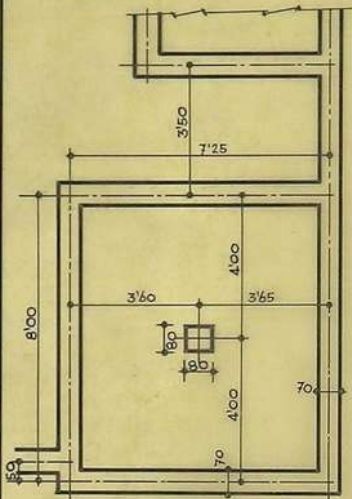
SECCION



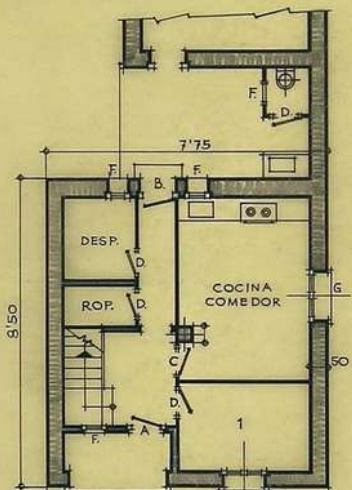
LATERAL



POSTERIOR

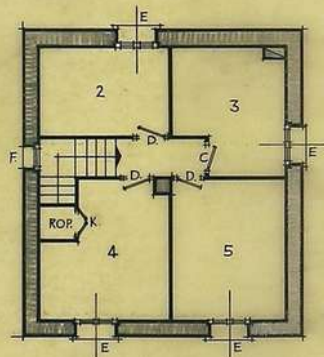


CIMIENTOS

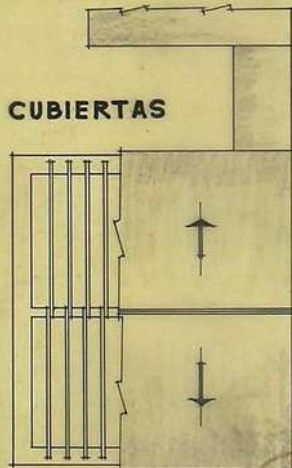


PLANTA BAJA

PLANTA ALTA



CUBIERTAS



ZARAGOZA, SEPTIEMBRE 1959.

EL ARQUITECTO:

EL INGENIERO AGRÓNOMO:

M. Medina

