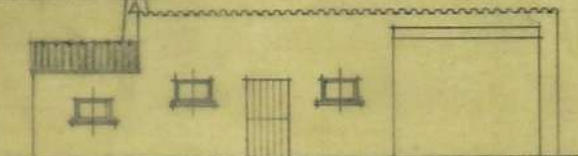




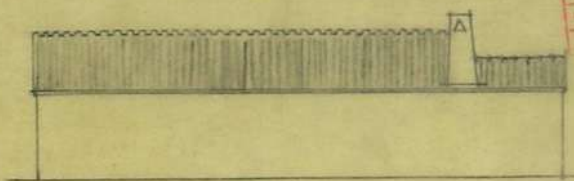
## REFUGIO EN LA PARCELA

ESCALA 1:100

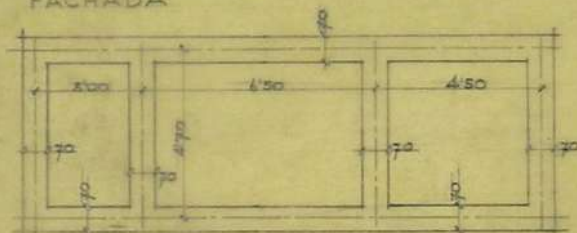
PLANOS	15
PROYECTO	11
GRUPO	1
INSTRUMENTO	



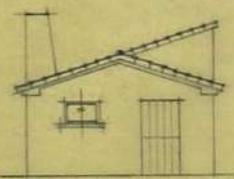
FACHADA



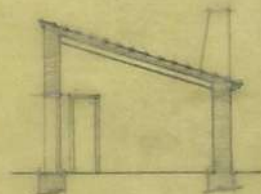
POSTERIOR



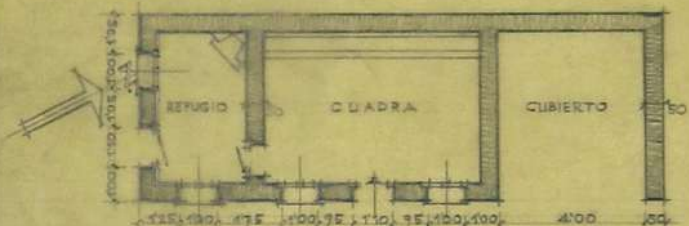
CIMENTOS



LATERAL



SECCION



PLANTA



CUBIERTAS



ZARAGOZA, JUNIO 1959

*M. Verdú*  
ARQUITECTO

