

H.CE. 18.

CELADAS. Manzana 9. nº. 33.  
Reconstrucción de la casa de Jerón Egidio Charavía

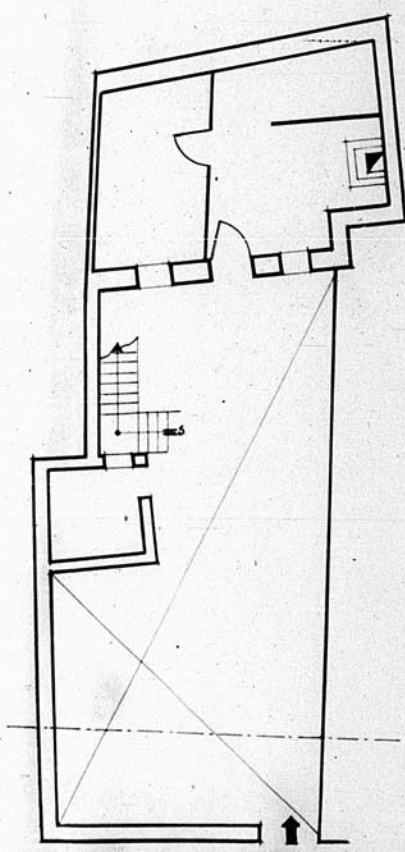
ESTADO ACTUAL  
ESTADO de REFORMA

1:100.  
1:100.

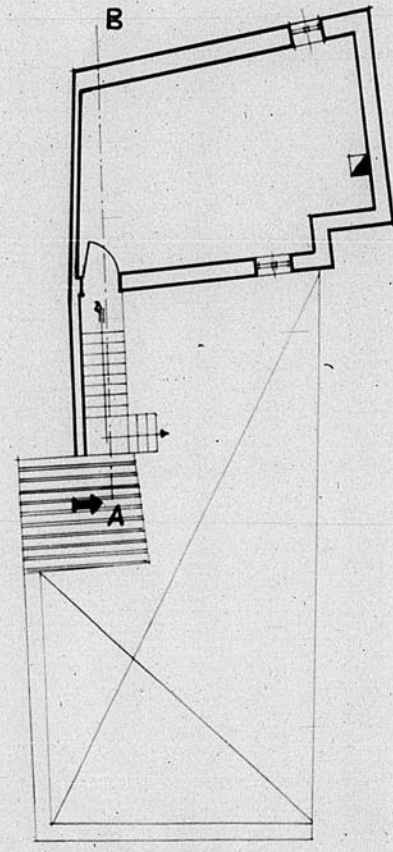
*J. M. M. M.*

13028

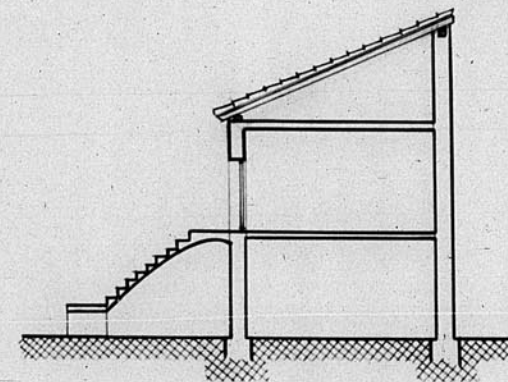
ESTADO ACTUAL



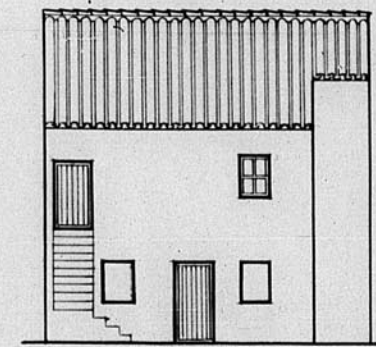
PLANTA BAJA



PLANTA 1ª

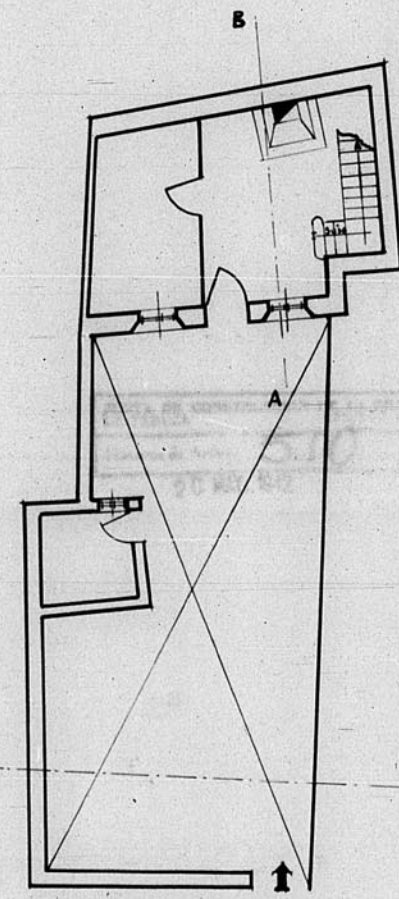


SECCION

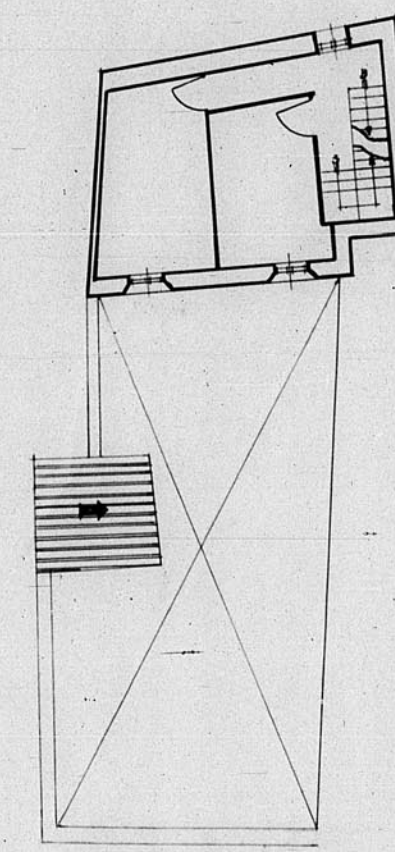


ALZADO

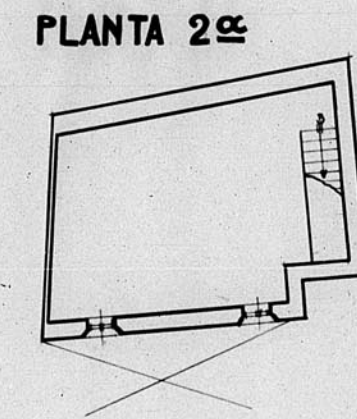
REFORMA  
H.CE. 18.



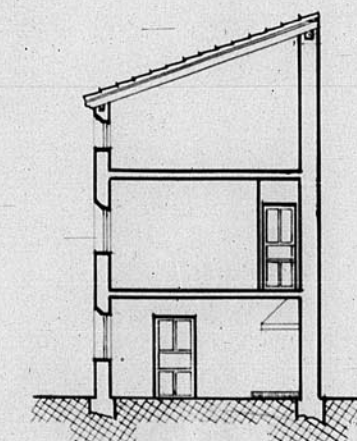
PLANTA BAJA



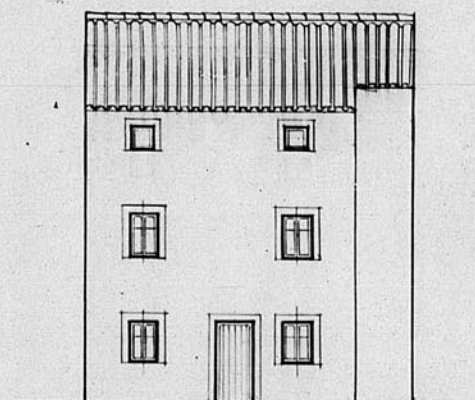
PLANTA 1ª



PLANTA 2ª



SECCION



ALZADO

ESCALA 1/100

JUNTA DE CONSTRUCCION DE LA PROVINCIA  
DE TERUEL  
Historico de Archivos 511