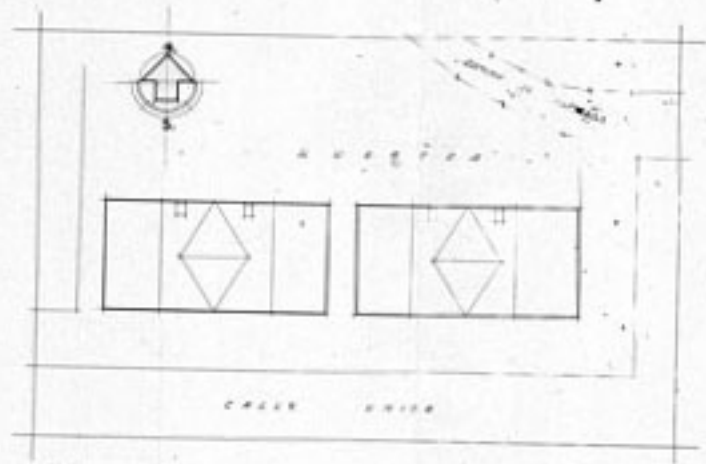
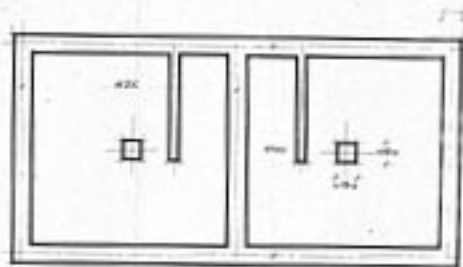


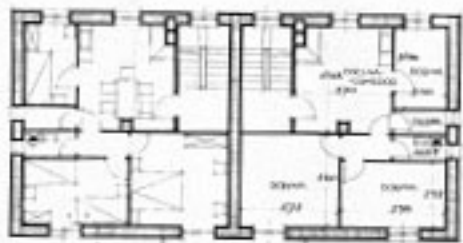
GRUPO DE 8 VIVIENDAS EN JAVIERRE
(BIELSA)



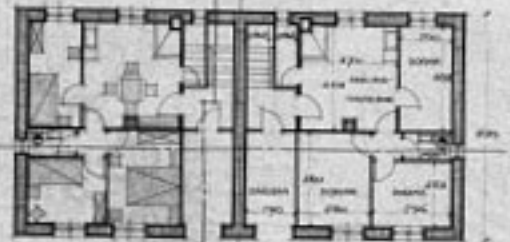
Empaquetamiento (escala 1:200)



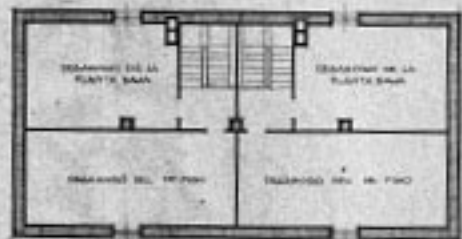
Planta de accesos



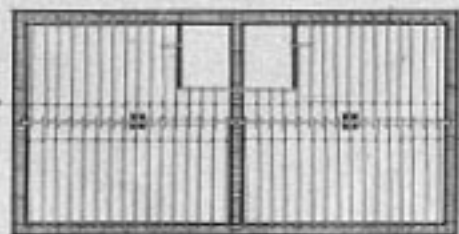
Planta primera



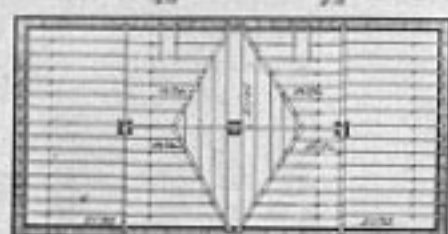
Planta baja



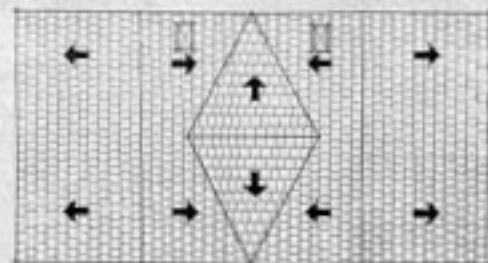
Planta del desván



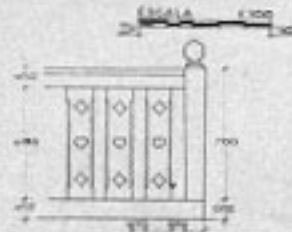
Entresuelo piso



Entresuelo cubierta



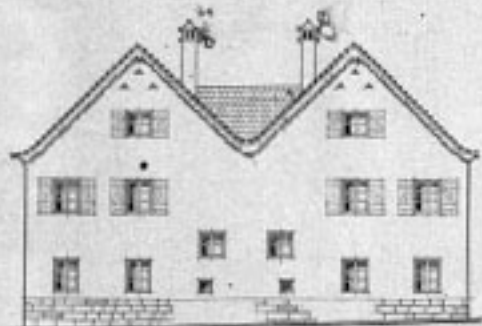
Planta de cubierta



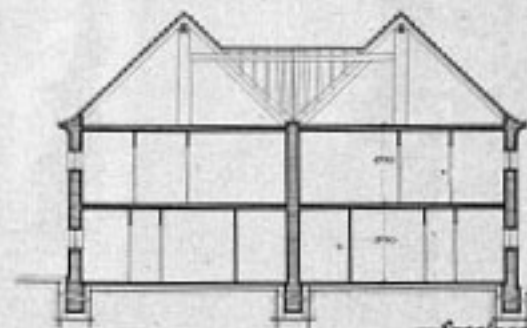
Detalle balcón
(1/200)



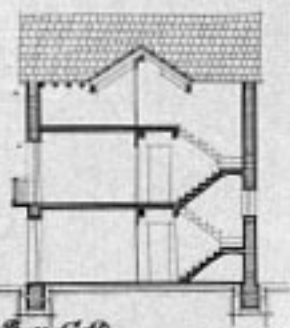
Fachada principal



Fachada posterior



Secciones A-B y C-D



W. B. ...
...