

Proyecto de terminación de la obra
Ayuntamiento en
Corla (Zamora)

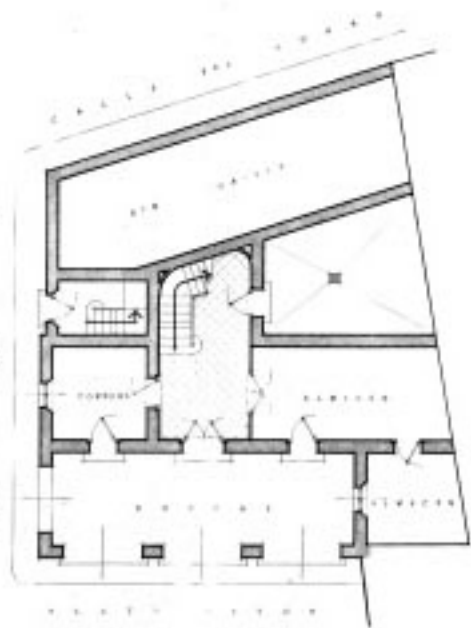
1



Emplazamiento
ESCALA 1:1000

Antonio L. de S. 1970
El Arquitecto

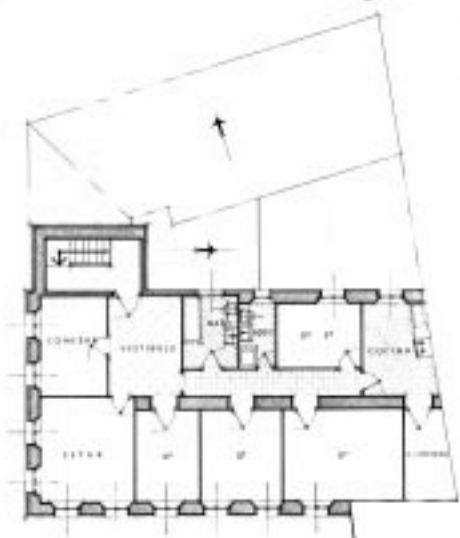
[Handwritten signature]
XXX



Planta baja

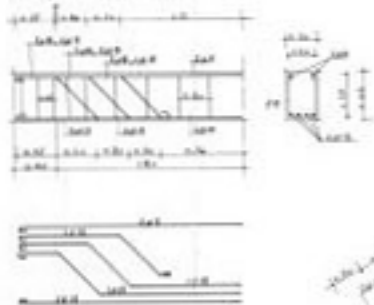


Planta 1ª



Planta 2ª

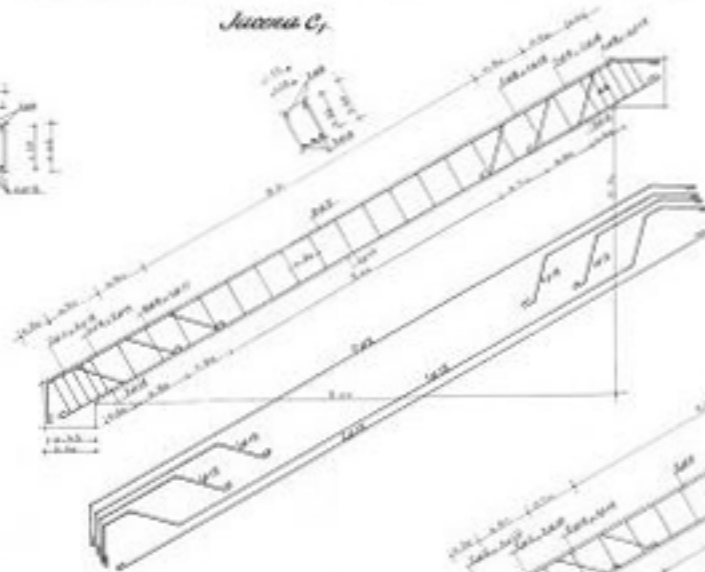
Semi-juntura 1 y 1,



Semi-juntura 1 2,

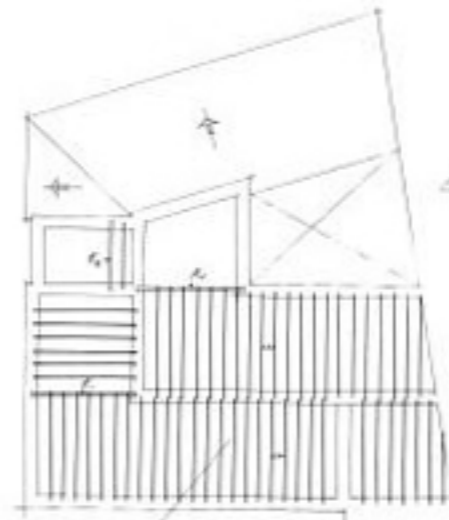
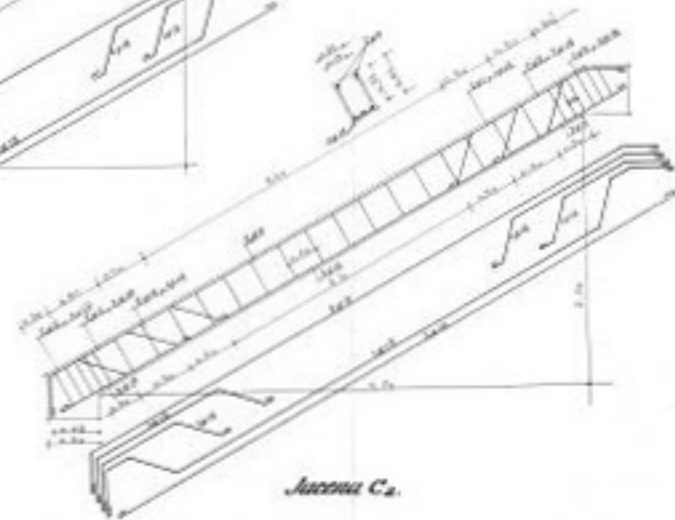


Junta C₁



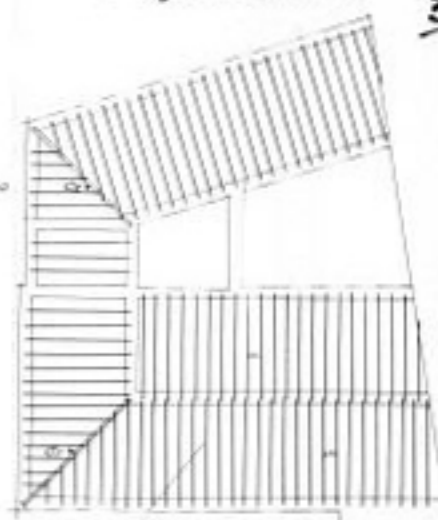
Escala: 1/20

Junta C₂



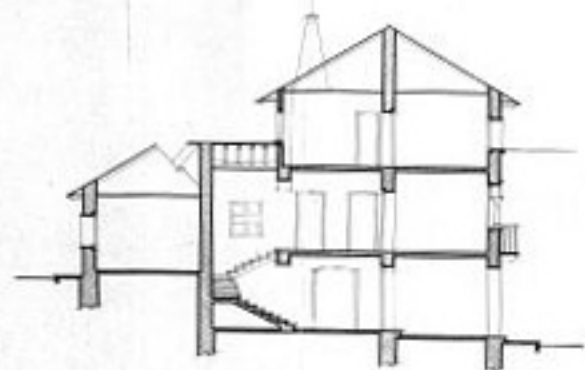
Forjato de piso

Escala: 1/20

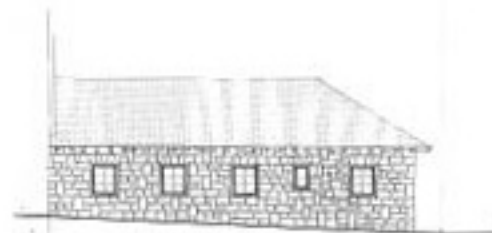


Forjato de cubierta

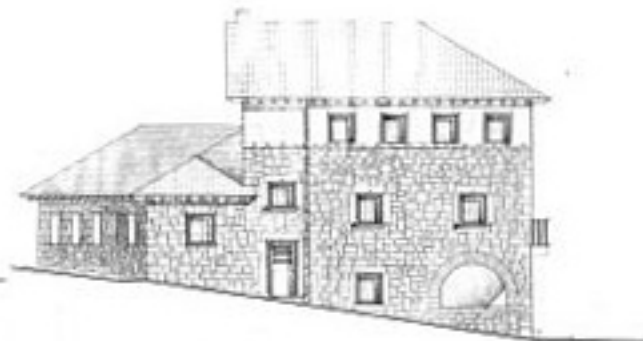




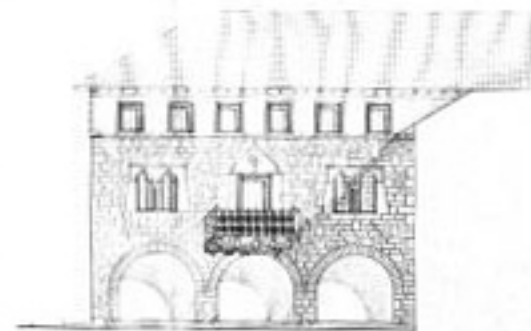
Sección EF



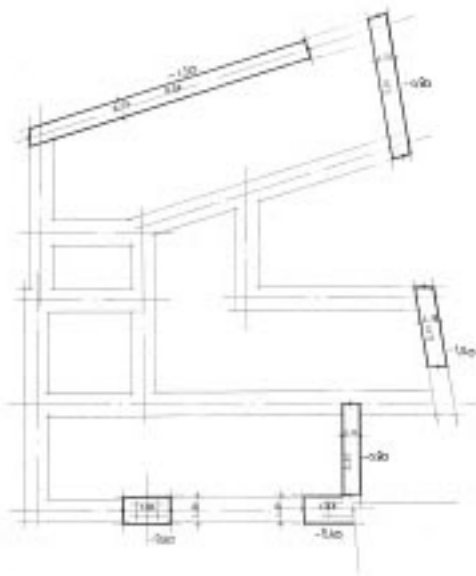
Alzado AB



Alzado ABC



Alzado CD



5

ESCALA 1:100
SERVICIO ADJUNTO P.T.O.
EL ARQUITECTO.

Escalera de hormigón

