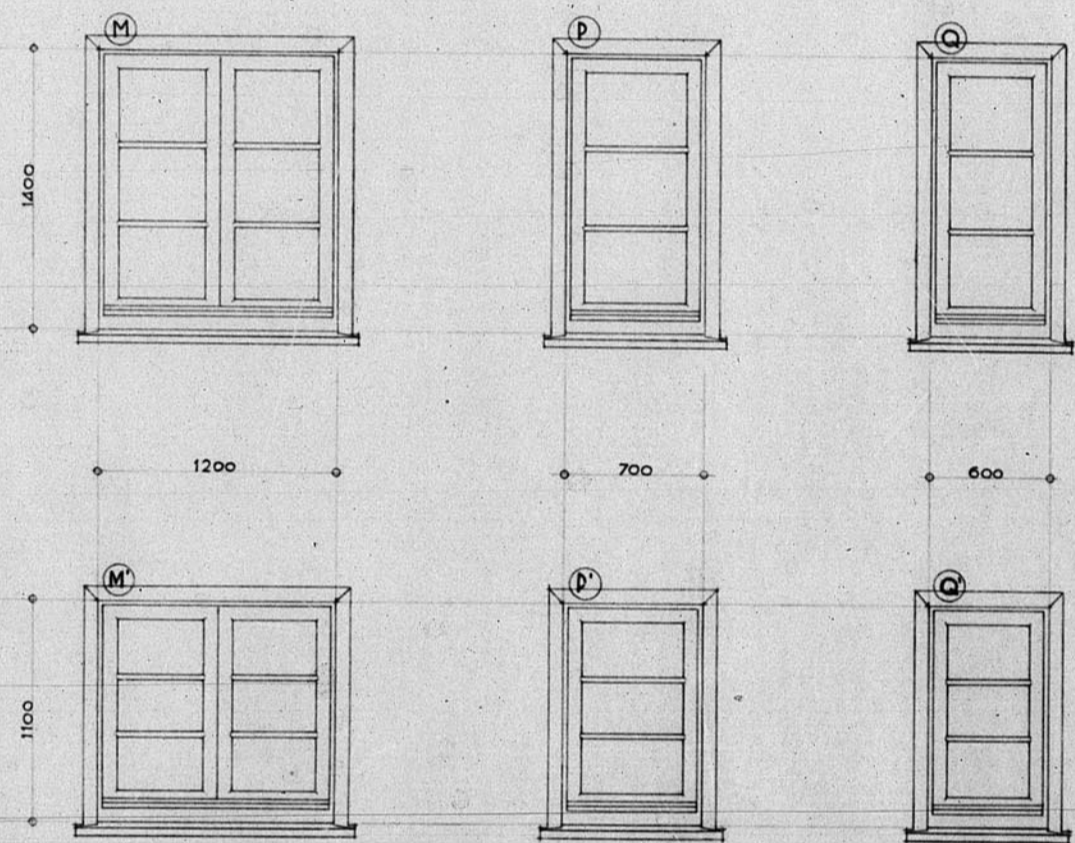
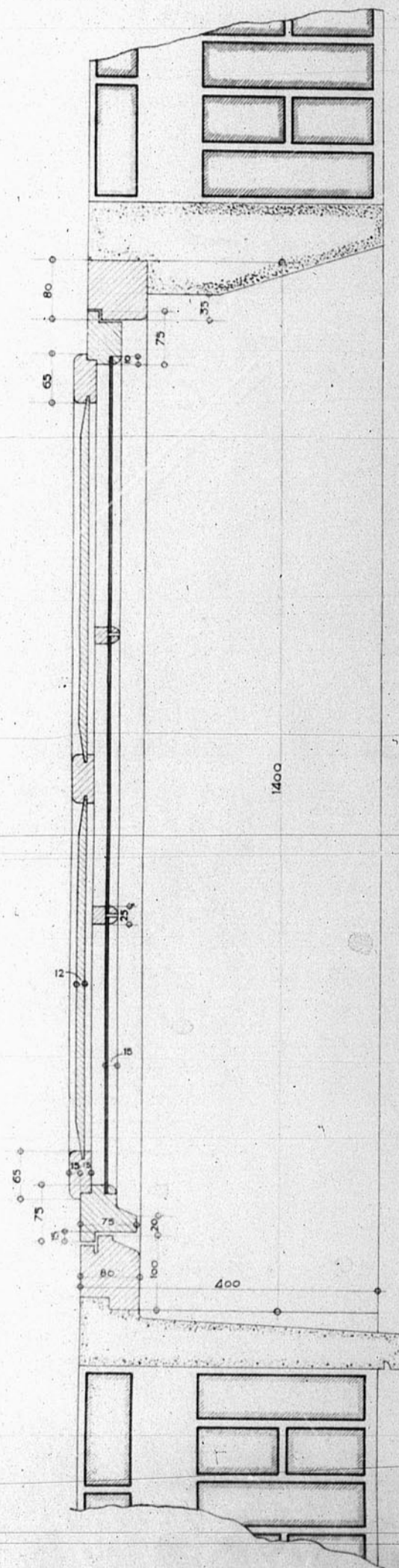
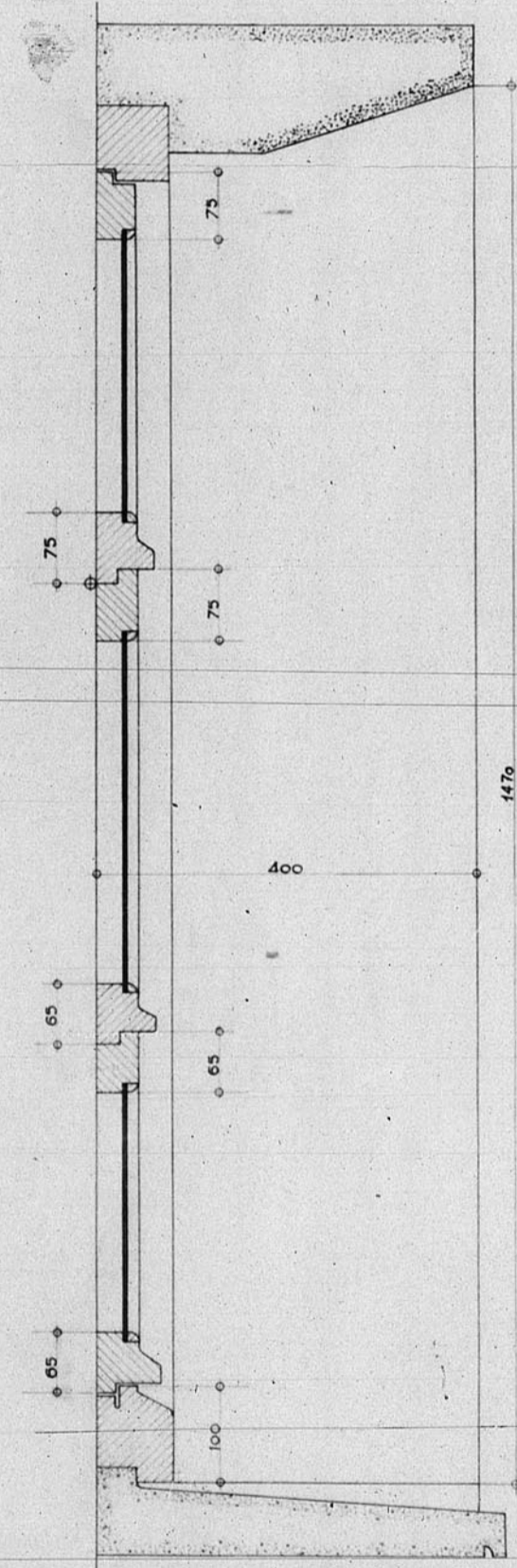
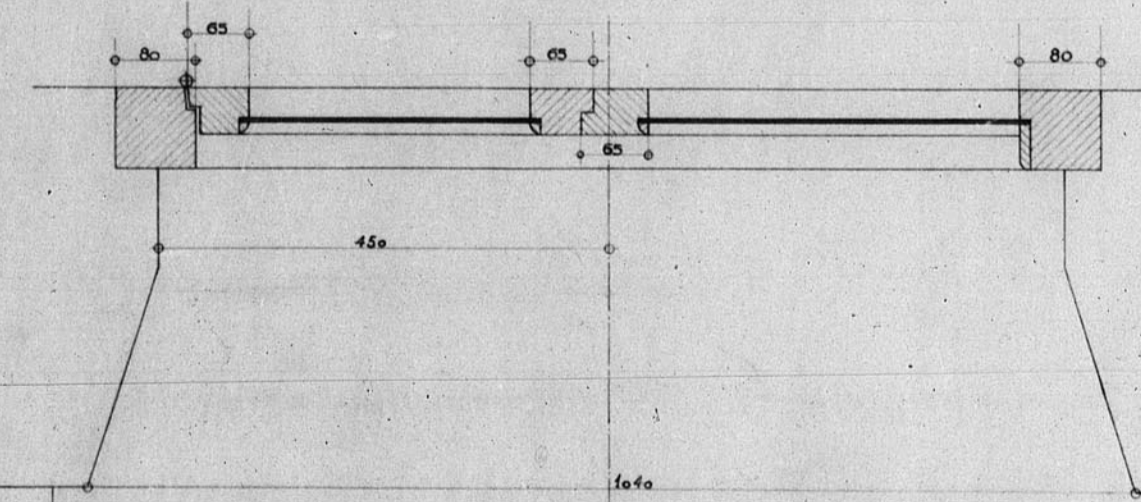
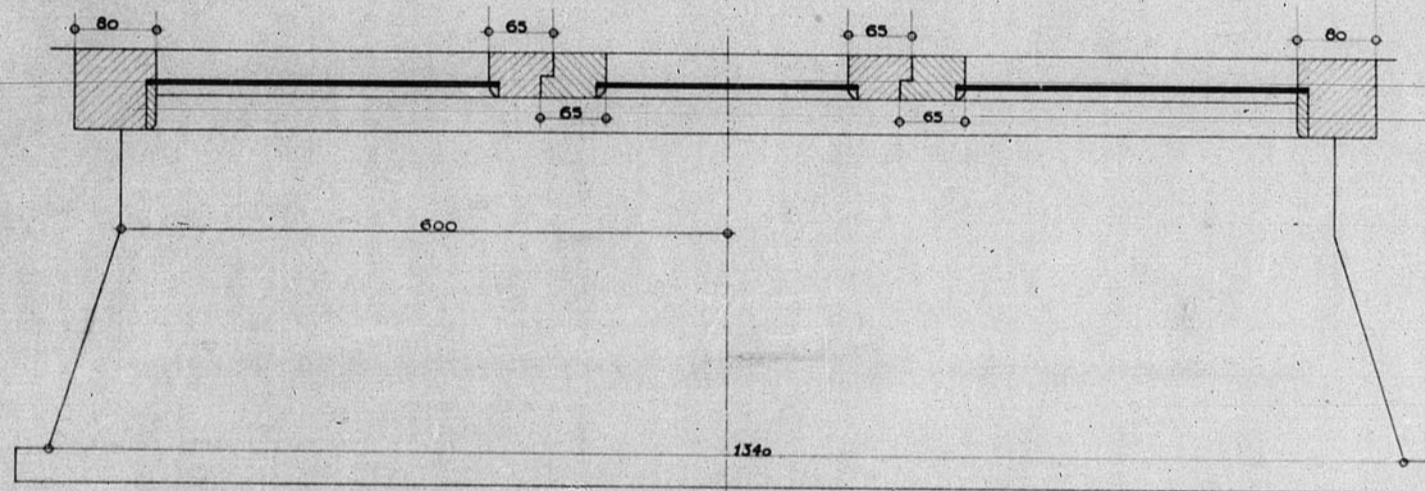
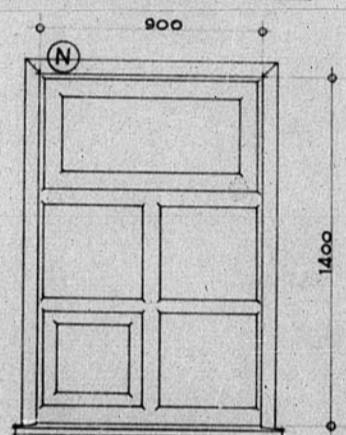
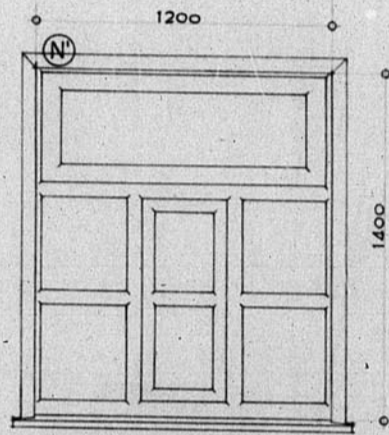


12.213.

Dirección General de Regiones Devastadas
Arquitectura
Bloque de viviendas Calle San Francisco Teruel.
Escala 1:5
Ecarpintería

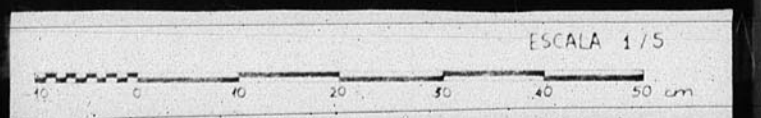


Escala 1:25



Teruel 10 de Marzo de 1940
El Arquitecto

Hej de h



CLN. 502

JUNTA DE CONSERVACION DE LA HISTORIA DE TERUEL
Division de Archivo

GOBIERNO DE ARAGON