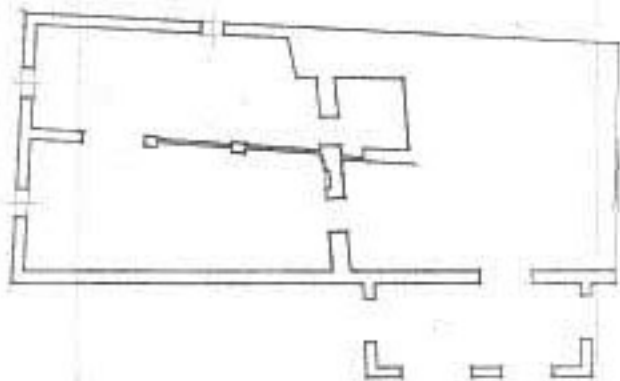
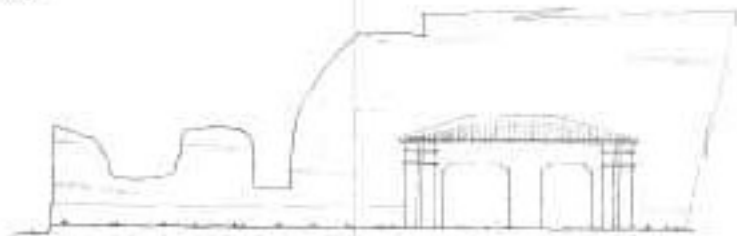


*Proyecto de Reconstrucción  
de la Ermita de Cillas (Murcia)*

*Estado actual.*



*Planta.*



*alzadas*

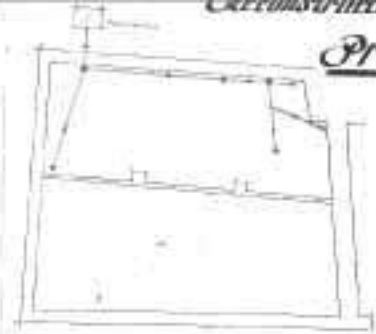
*Escalera*



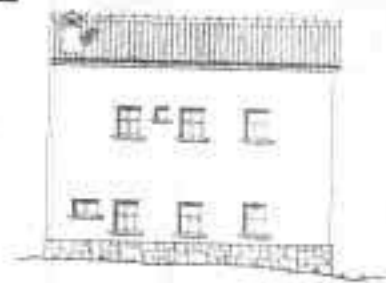
Proyecto



*Planta baja*



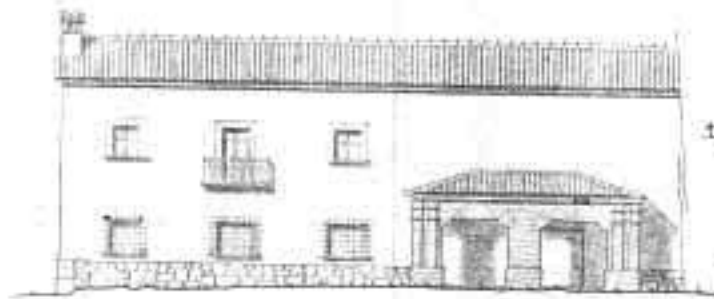
*Planta de saneamiento*



*Alzados*



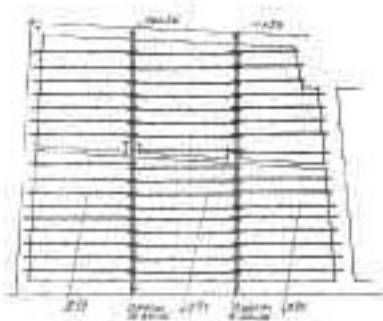
*Planta alta*



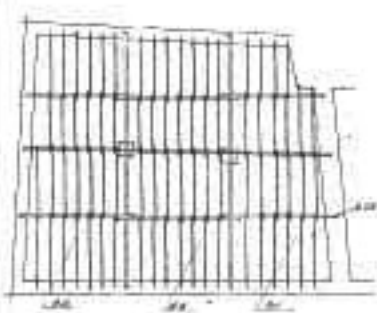
Manera de construir en  
la zona



*Escala: 1/100*

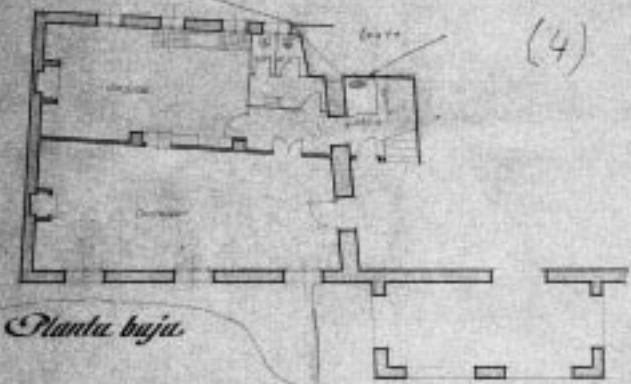


*Planta de entramado de piso*

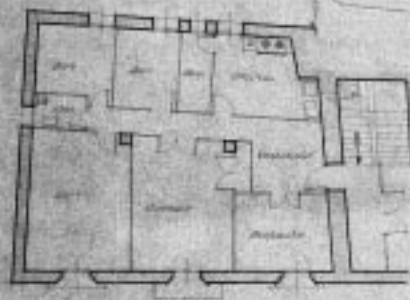


*Planta de entramado de cubierta*

Ampliación del primer altar lateral



*Planta baja*

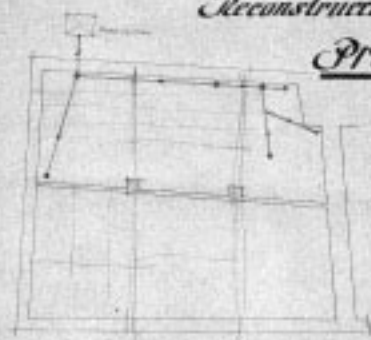


*Planta alta*

Reconstrucción de la Ermita de Villás

Proyecto

Escala 1:100



*Planta de sacramento*



*Alzados*

