



GOBIERNO
DE ARAGON



GOBIERNO
DE ARAGON



GOBIERNO
DE ARAGON



GOBIERNO
DE ARAGON



GOBIERNO
DE ARAGON



GOBIERNO
DE ARAGON



**GOBIERNO
DE ARAGON**



GOBIERNO
DE ARAGON



GOBIERNO
DE ARAGON



GOBIERNO
DE ARAGON



GOBIERNO
DE ARAGON



GOBIERNO
DE ARAGON



GOBIERNO
DE ARAGON



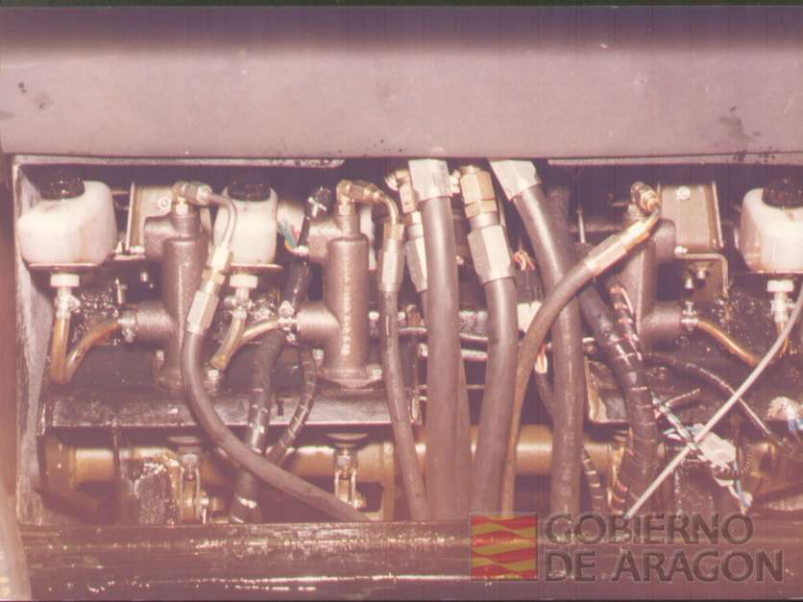
GOBIERNO
DE ARAGON



GOBIERNO
DE ARAGON



GOBIERNO
DE ARAGON



GOBIERNO
DE ARAGON



GOBIERNO
DE ARAGON



GOBIERNO
DE ARAGON



EBRO

GOBIERNO
DE ARAGON



GOBIERNO
DE ARAGON





GOBIERNO
DE ARAGON



GOBIERNO
DE ARAGON



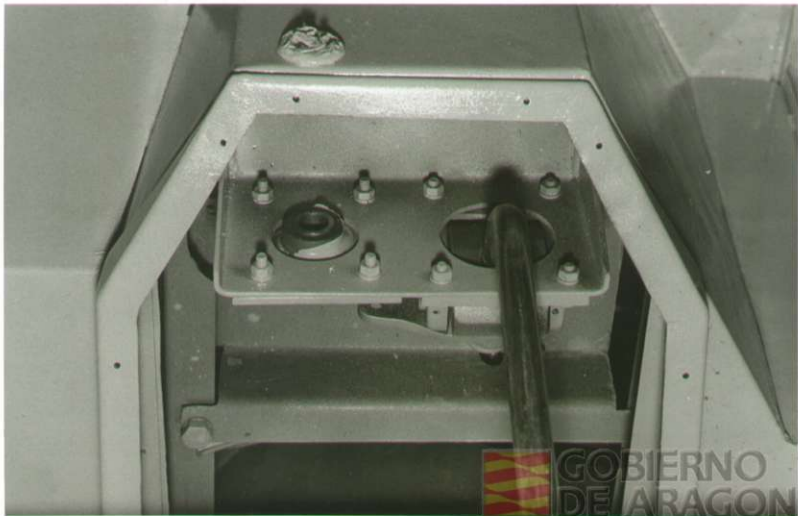
GOBIERNO
DE ARAGON



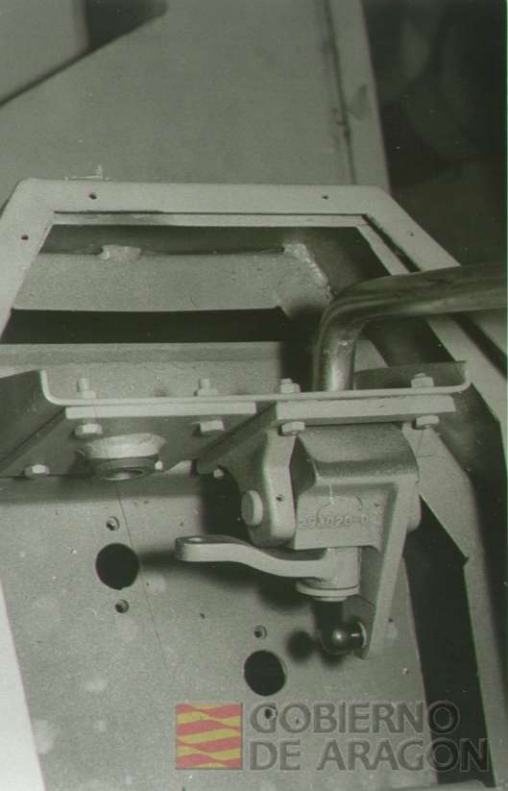
GOBIERNO
DE ARAGON



GOBIERNO
DE ARAGON



 GOBIERNO
DE ARAGON

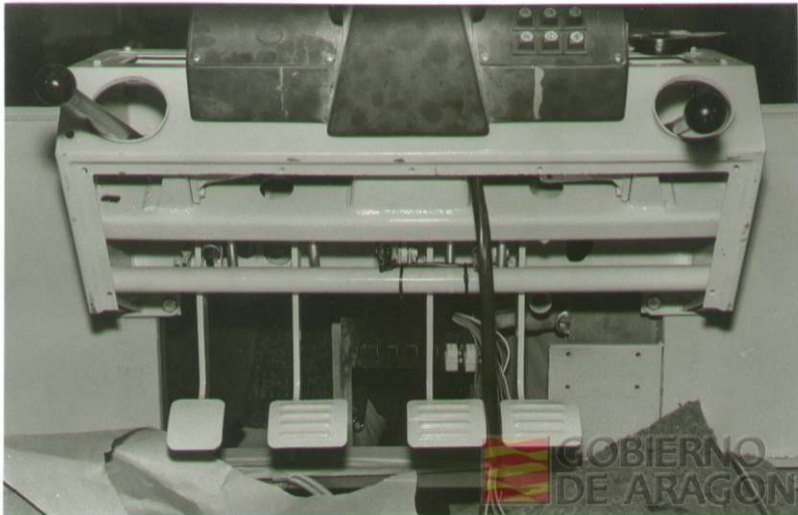


GOBIERNO
DE ARAGON



GOBIERNO
DE ARAGON







GOBIERNO
DE ARAGON



GOBIERNO
DE ARAGON

A close-up photograph of a complex mechanical assembly, possibly a part of a vehicle or industrial machinery. The image shows various metal components, including a large white-painted metal plate, a cylindrical metal rod, and several bolts and nuts. The lighting is somewhat dim, highlighting the metallic textures and the intricate arrangement of parts. In the bottom right corner, there is a watermark consisting of the flag of the Government of Aragon and the text "GOBIERNO DE ARAGON".

 GOBIERNO
DE ARAGON

044370
88

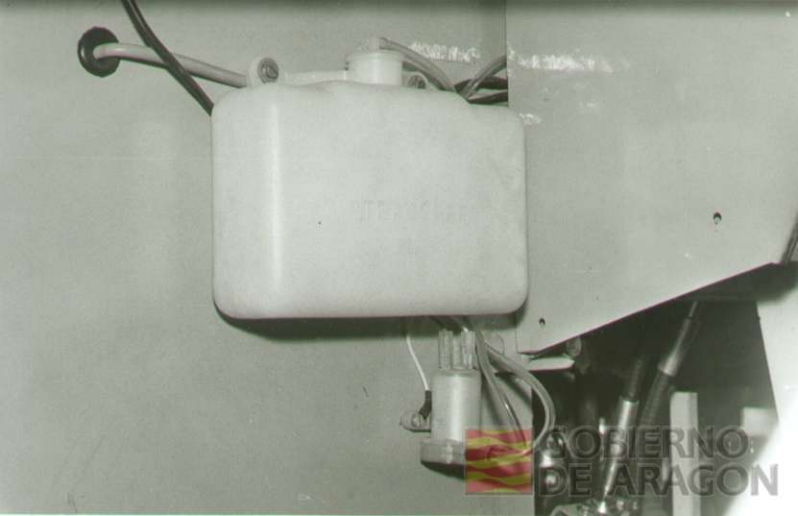


GOBIERNO
DE ARAGON



GOBIERNO
DE ARAGON

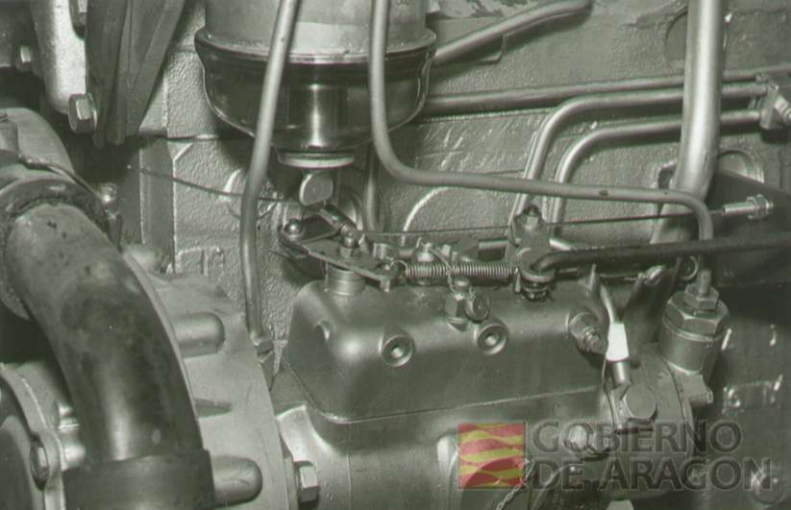




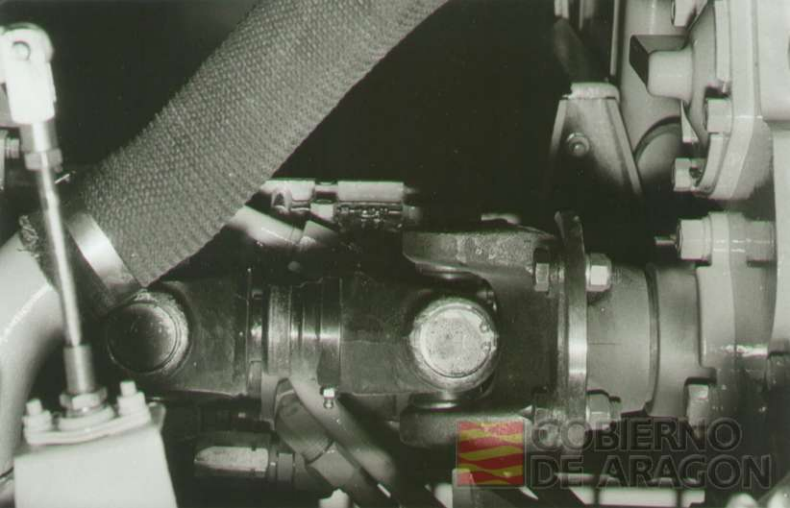
GOBIERNO
DE ARAGON



GOBIERNO
DE ARAGON



GOBIERNO
DE ARAGON



GOBIERNO
DE ARAGON



GOBIERNO
DE ARAGON





GOBIERNO
DE ARAGON



GOBIERNO
DE ARAGON

80

Z

~~40~~
SP

51578-F

4-01



GOBIERNO
DE ARAGON



GOBIERNO
DE ARAGON

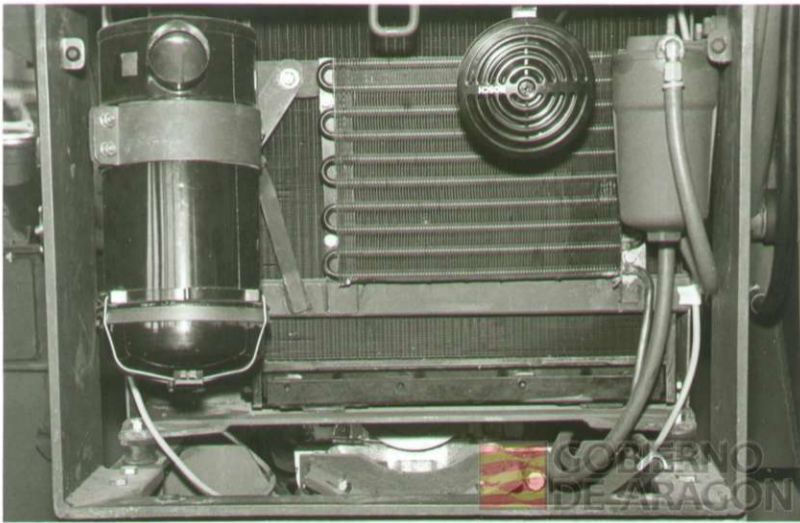


GOBIERNO
DE ARAGON



GOBIERNO
DE ARAGON

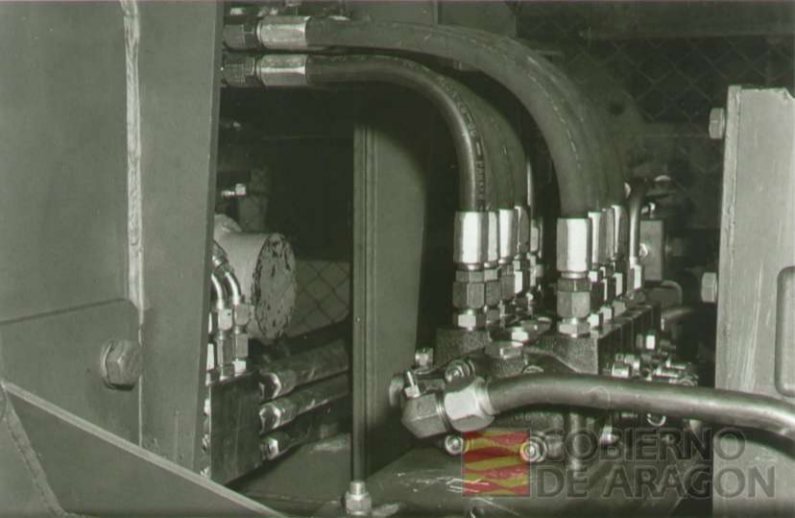




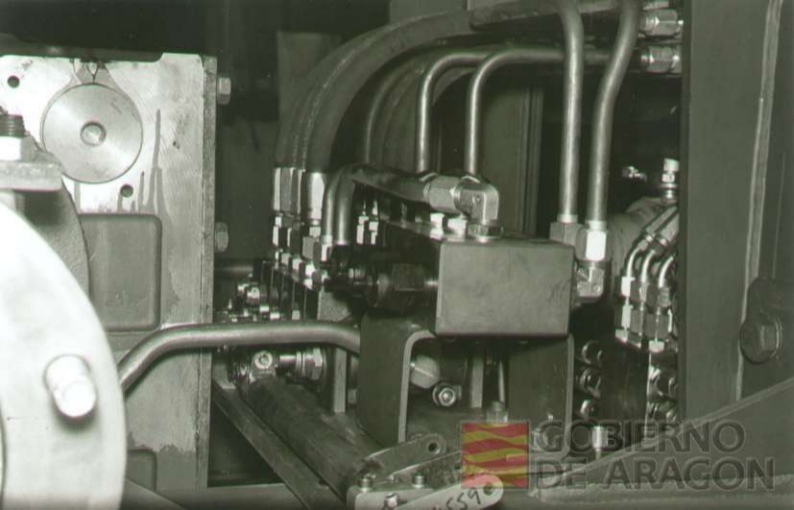
GOBIERNO DE ARAGON



GOBIERNO
DE ARAGON



GOBIERNO
DE ARAGON



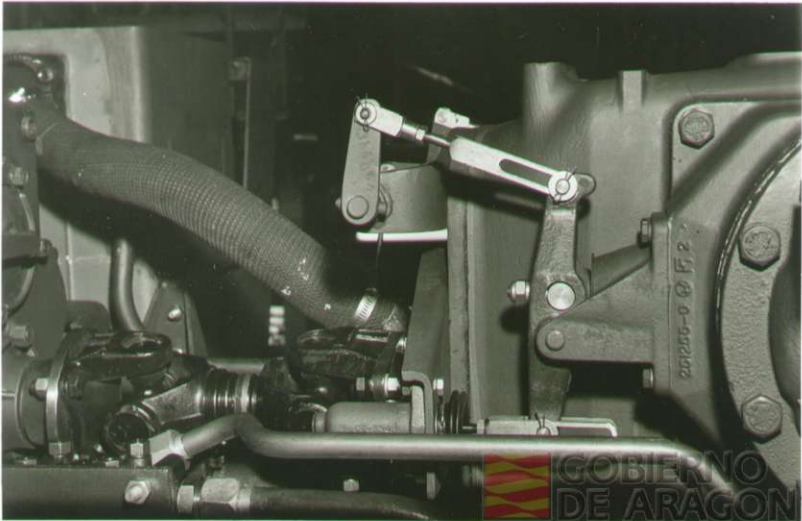
GOBIERNO
DE ARAGON

559



GOBIERNO
DE ARAGON

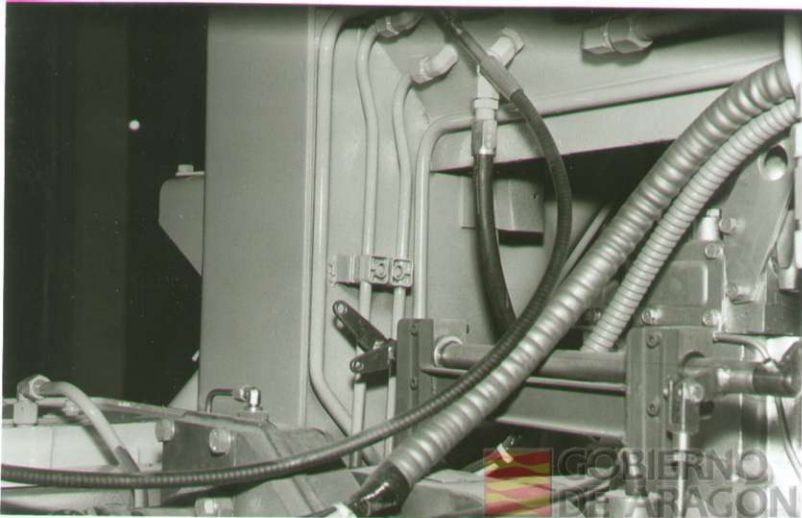


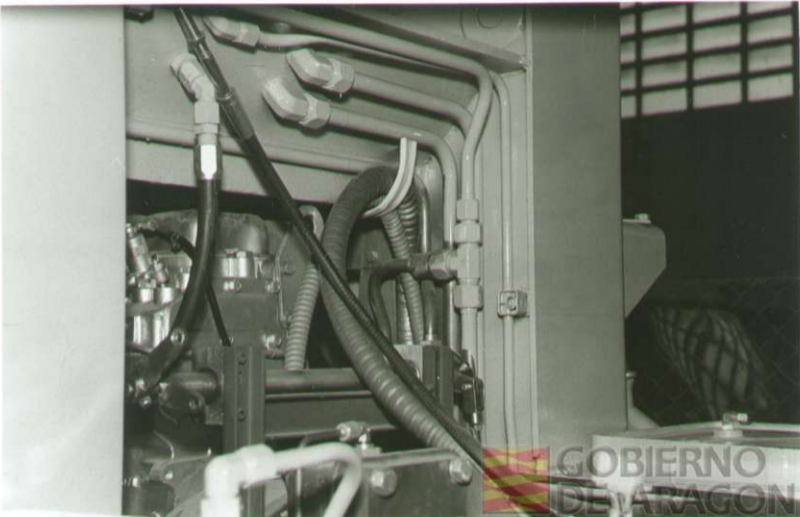


251255-0 @ F. 2



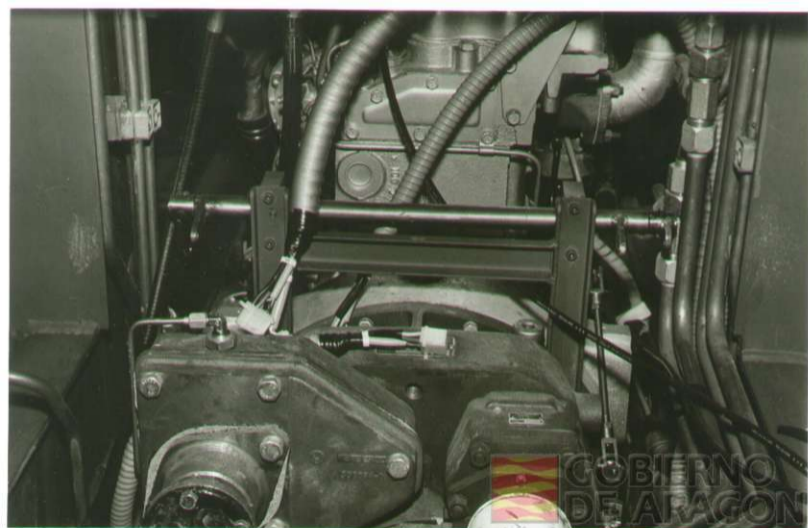
GOBIERNO DE ARAGON

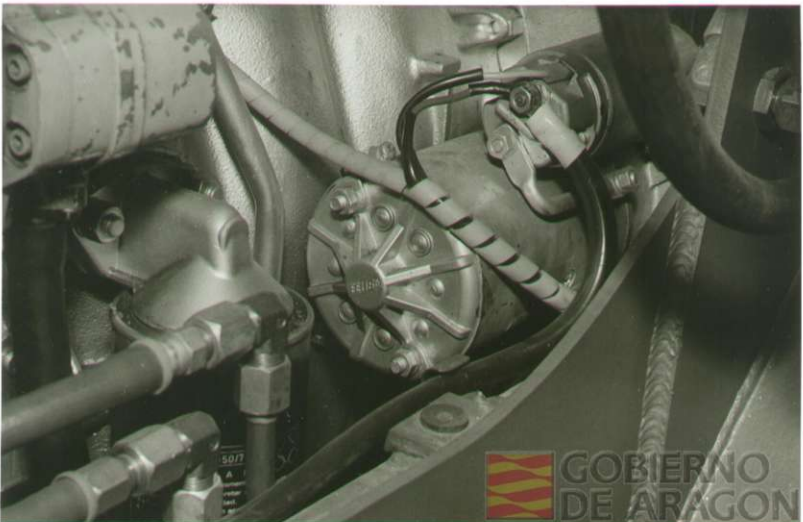






GOBIERNO
DE ARAGON

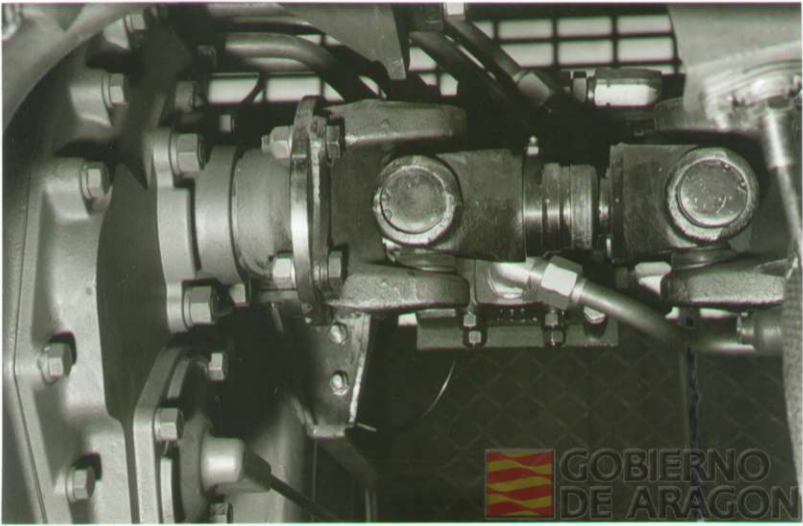




5017
A
Compu
reter
lect.
M



GOBIERNO
DE ARAGON



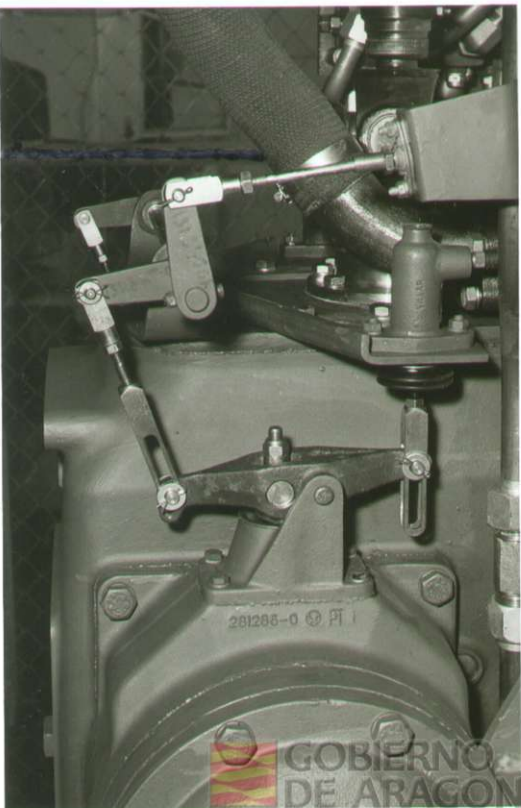
GOBIERNO
DE ARAGON



Verbrauch - 341 - 1271 - 8 NW 1317 - 49



GOBIERNO
DE ARAGON



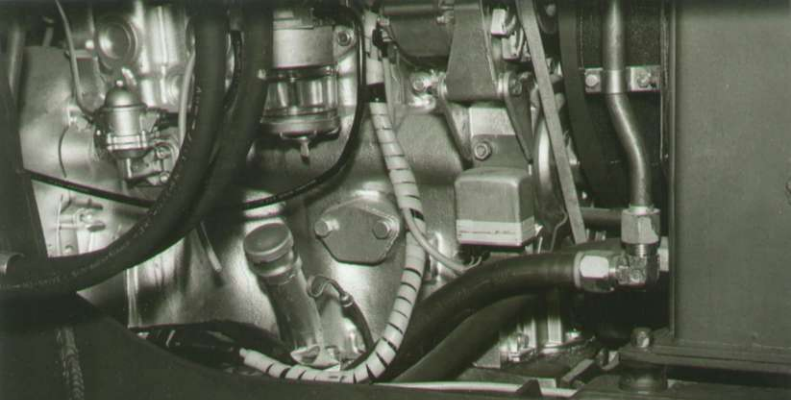
281285-0 PT



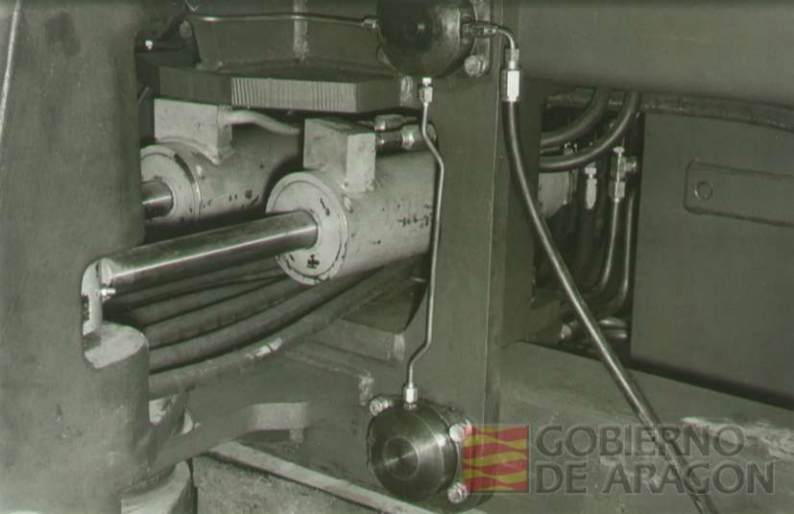
GOBIERNO
DE ARAGON



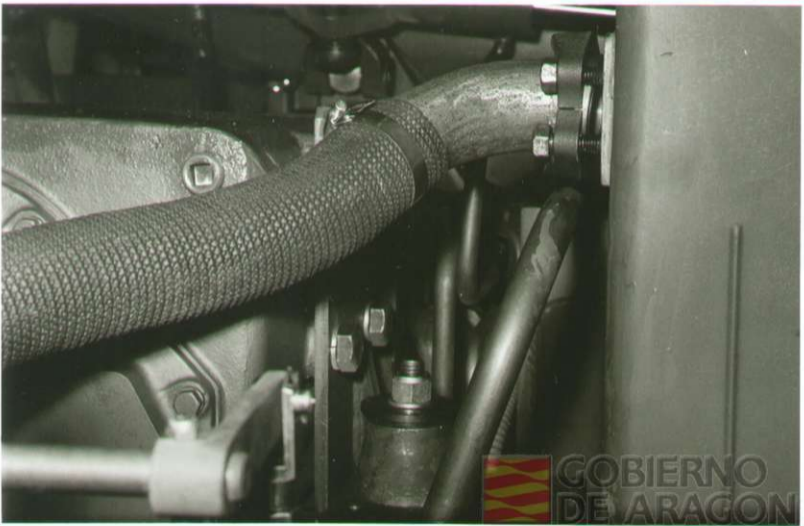
GOBIERNO
DE ARAGON



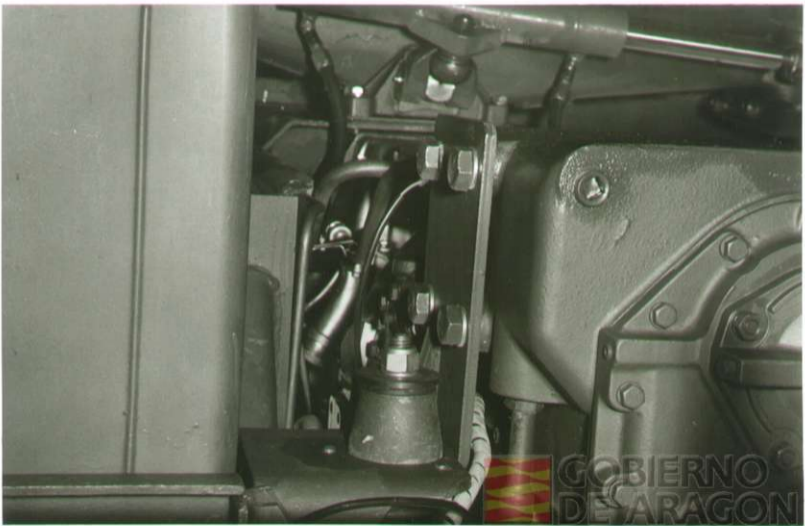
GOBIERNO
DE ARAGON



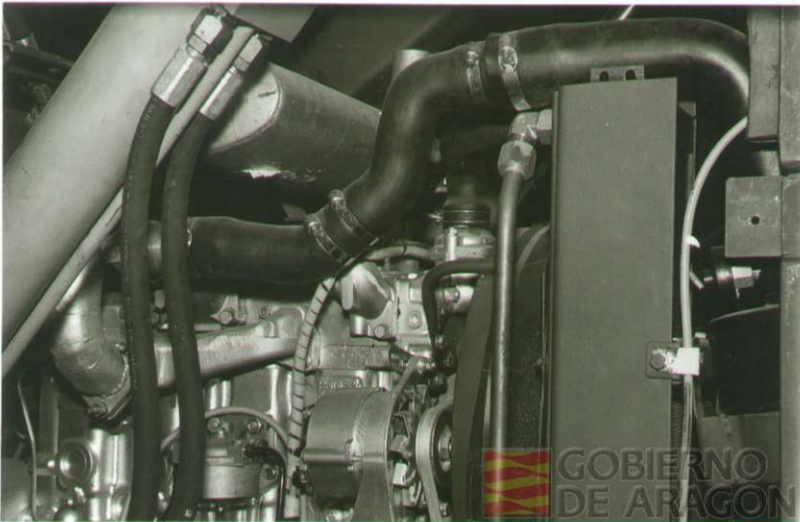
 GOBIERNO
DE ARAGON



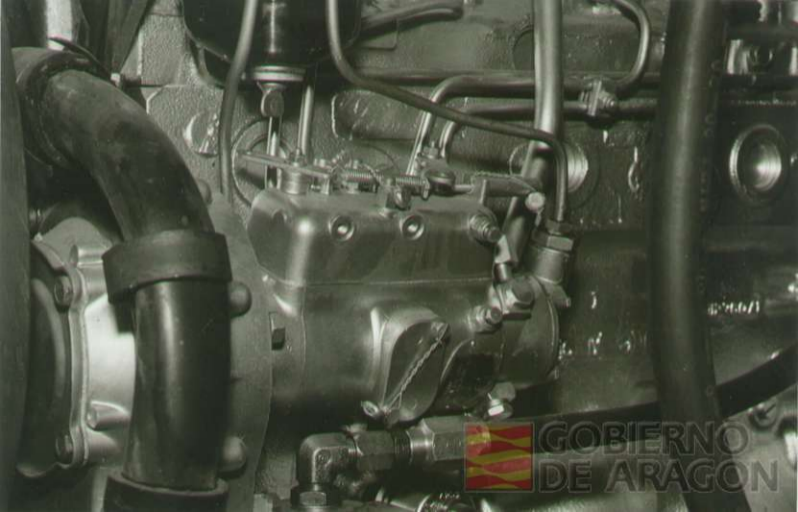
GOBIERNO
DE ARAGON



GOBIERNO
DE ARAGON



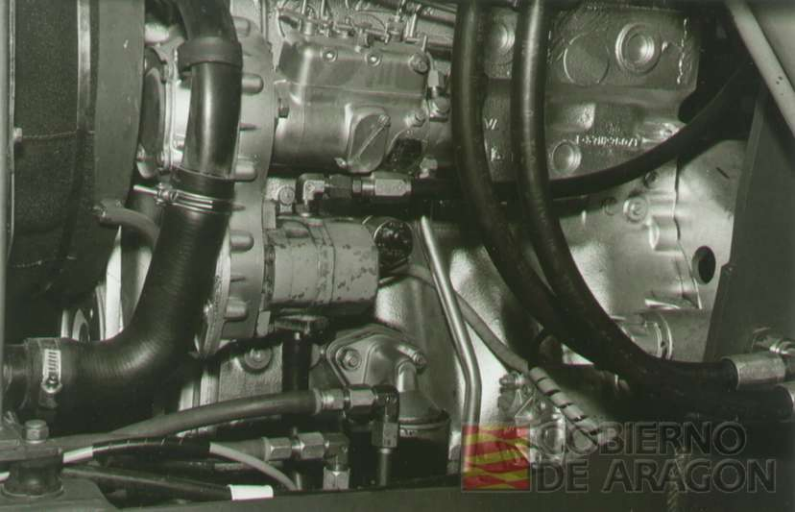
GOBIERNO
DE ARAGON



GOBIERNO
DE ARAGON



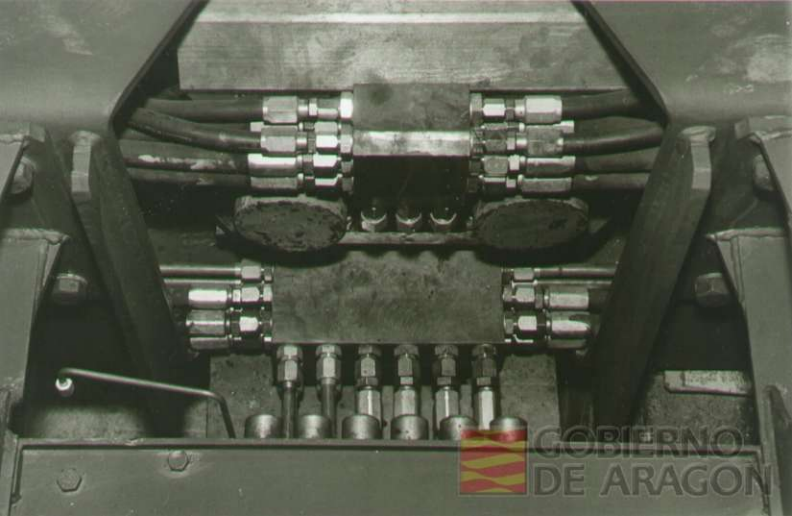
GOBIERNO
DE ARAGON



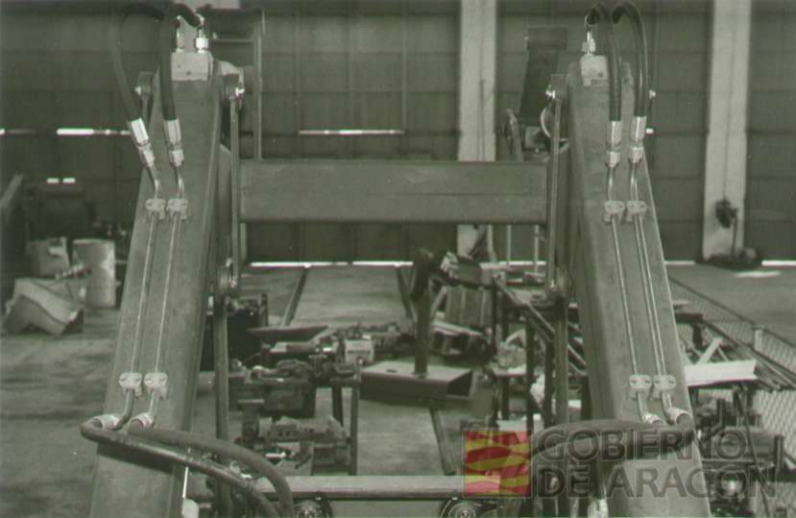
GOBIERNO
DE ARAGON



GOBIERNO
DE ARAGON



GOBIERNO
DE ARAGON



GOBIERNO
DE ARAGON

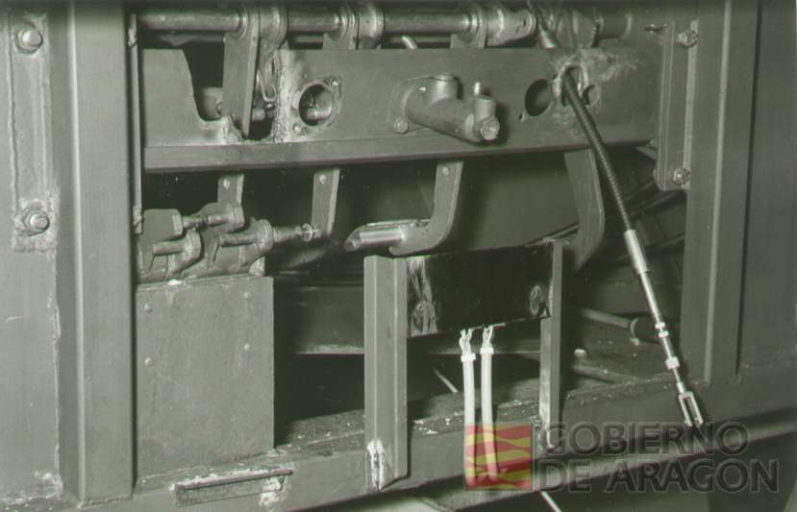


GOBIERNO.
DE ARAGON



GOBIERNO
DE ARAGON

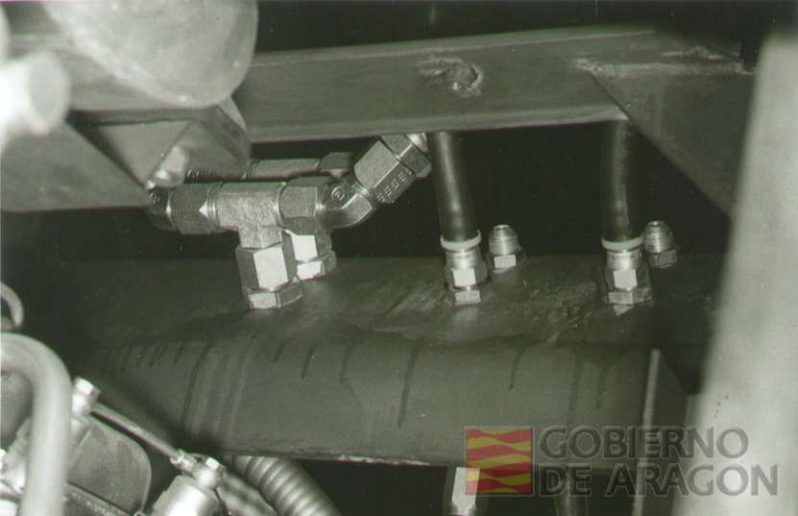




GOBIERNO
DE ARAGON



GOBIERNO
DE ARAGON





GOBIERNO
DE ARAGON



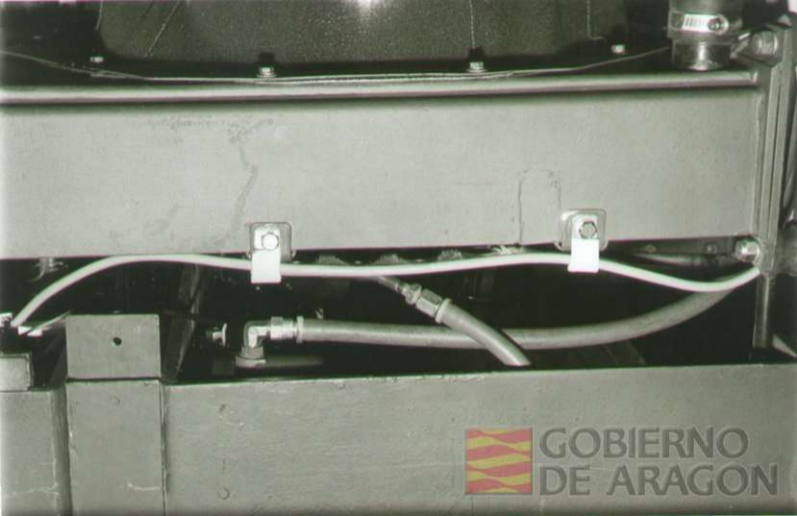
GOBIERNO
DE ARAGON



GOBIERNO
DE ARAGON



GOBIERNO
DE ARAGON



GOBIERNO
DE ARAGON



GOBIERNO
DE ARAGON