







GOBIERNO  
DE ARAGON

















CAF  
CONSTRUCCIONES  
& AUXILIAR DE FERROCARRILES



GOBIERNO  
DE ARAGON



RENFE

 GOBIERNO  
DE ARAGON



GOBIERNO  
DE ARAGON











56 v.

54 p.

65 v.

67 p.

65 v.

67 p.



GOBIERNO  
DE ARAGON











GOBIERNO  
DE ARAGON









30  
31  
32

33  
34  
35



50 x  
50 x  
50 x

50 x  
50 x  
50 x



RENFE

 GOBIERNO  
DE ARAGON



CAF  
SISTEMA  
DE SUSPENSIÓN



RENFE

8-441-003-1

E

ZONA

TARA , t  
Nº DE ATOE

FRENO AUT.  
FRENO MANO MAX.

1926m.  
1282m.

OR			
SI			



GOBIERNO  
DE ARAGON







AVVERTENZE  
PER IL CORRIDOIO  
E PER IL PORTO DI CARICO  
DEI VAGONI

AVVERTENZE  
PER IL CORRIDOIO  
E PER IL PORTO DI CARICO  
DEI VAGONI

AVVERTENZE  
PER IL CORRIDOIO  
E PER IL PORTO DI CARICO  
DEI VAGONI

AVVERTENZE  
PER IL CORRIDOIO  
E PER IL PORTO DI CARICO  
DEI VAGONI

AVVERTENZE  
PER IL CORRIDOIO  
E PER IL PORTO DI CARICO  
DEI VAGONI



Small white rectangular label with black text, located above the door handle.

AVISO  
PARTES DE AVISO



56 v.  
54 p.

65 v.  
67 p.

60 v.  
62 p.



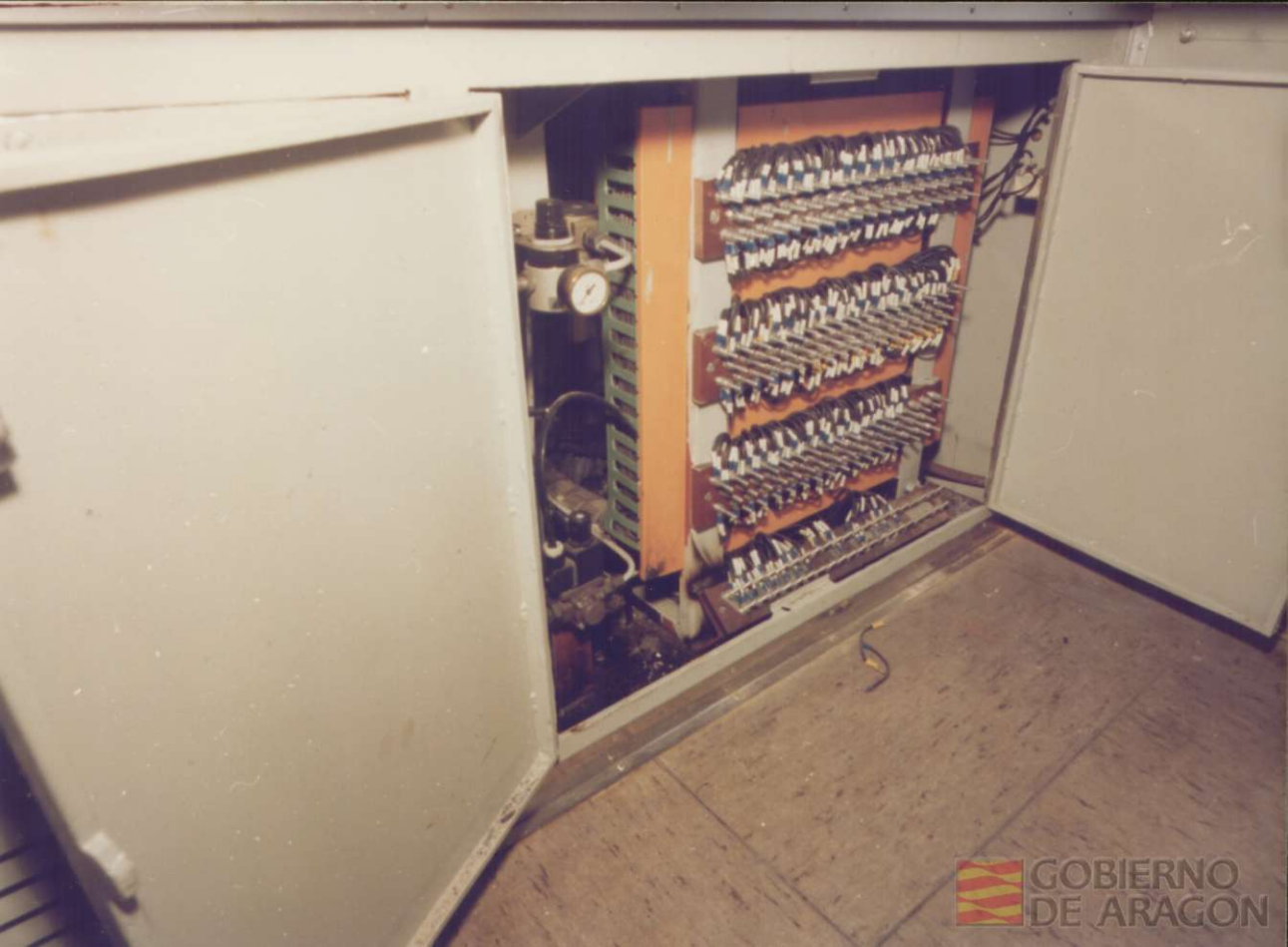
GOBIERNO  
DE ARAGON





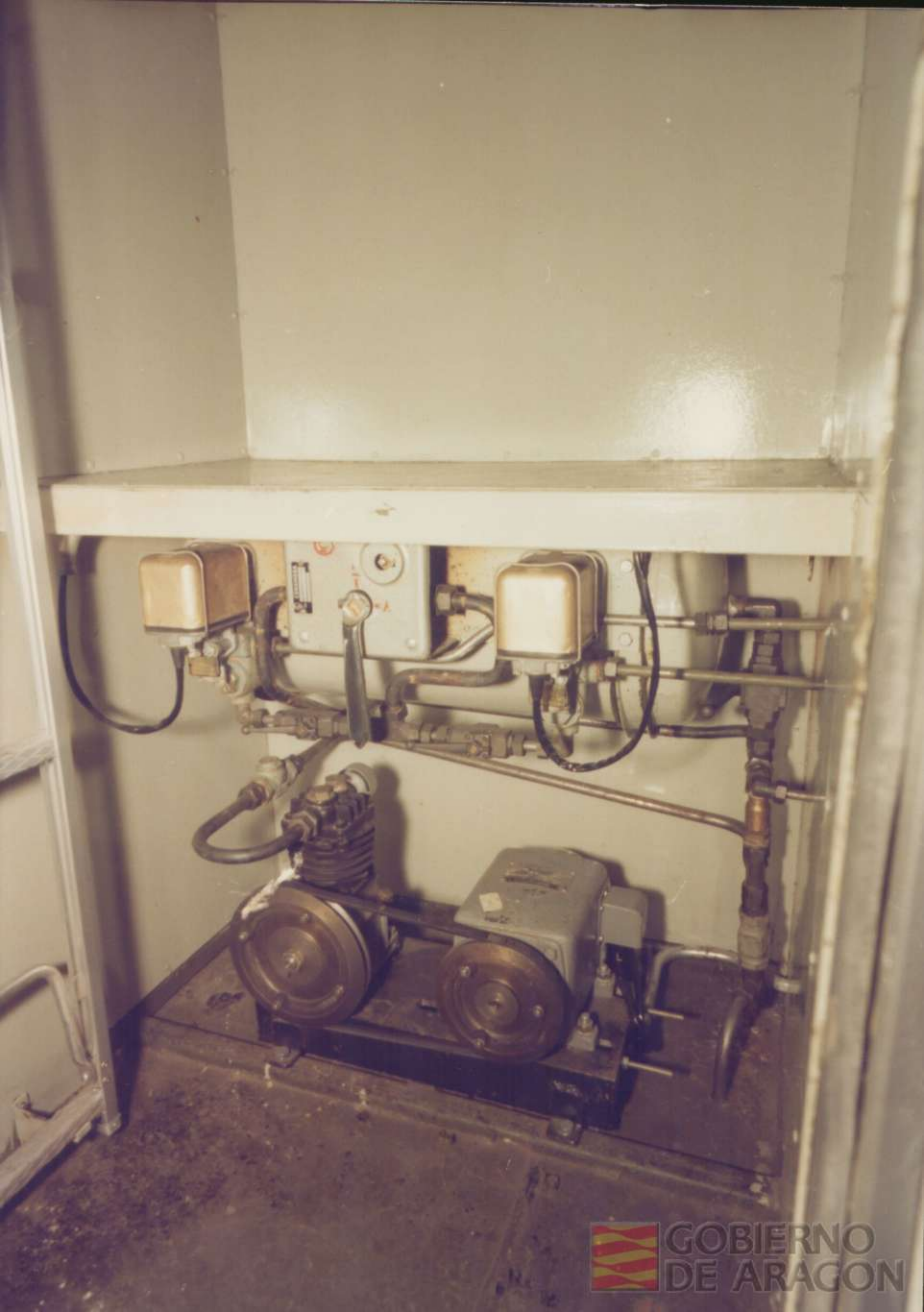
GOBIERNO  
DE ARAGÓN

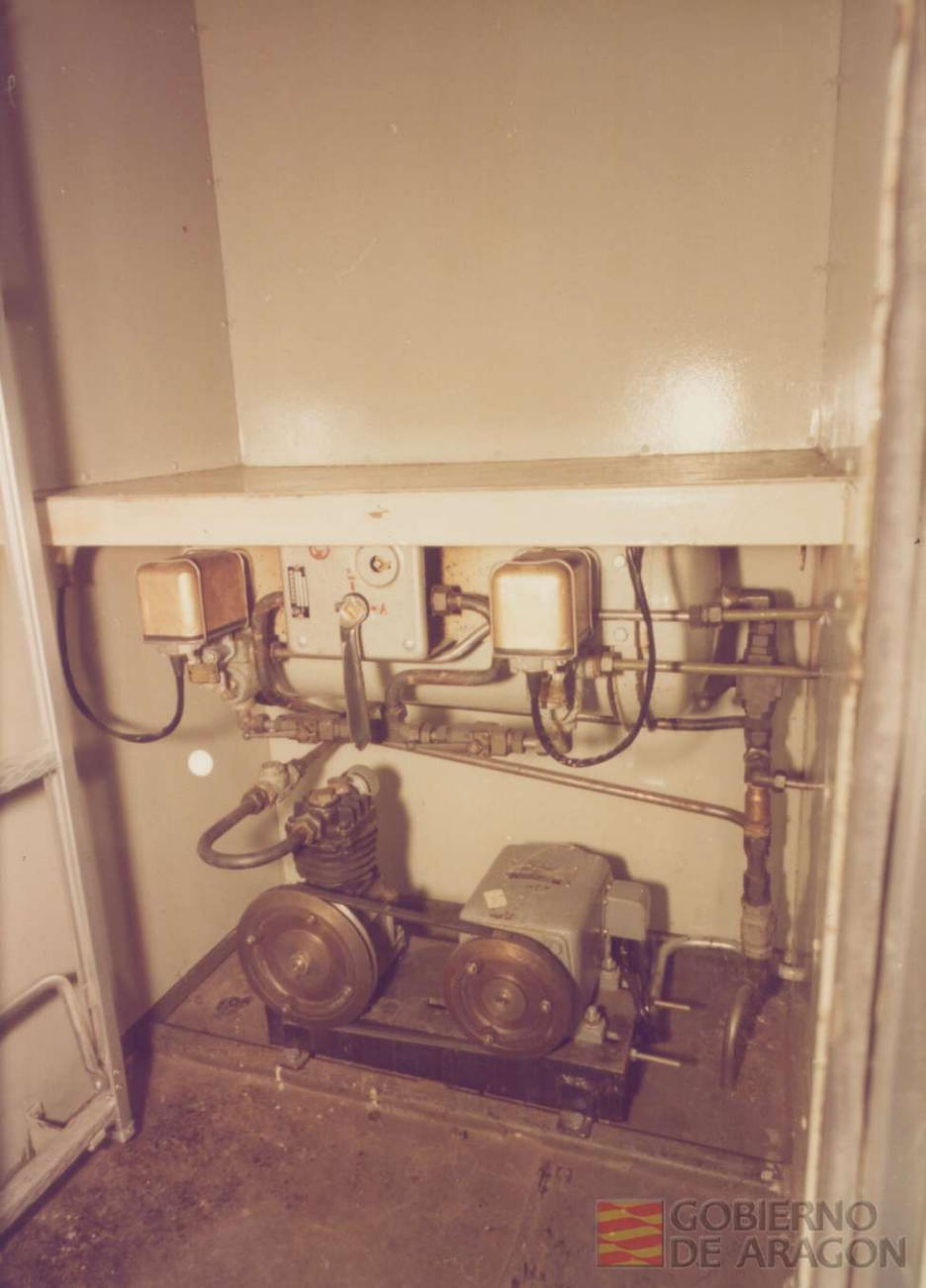






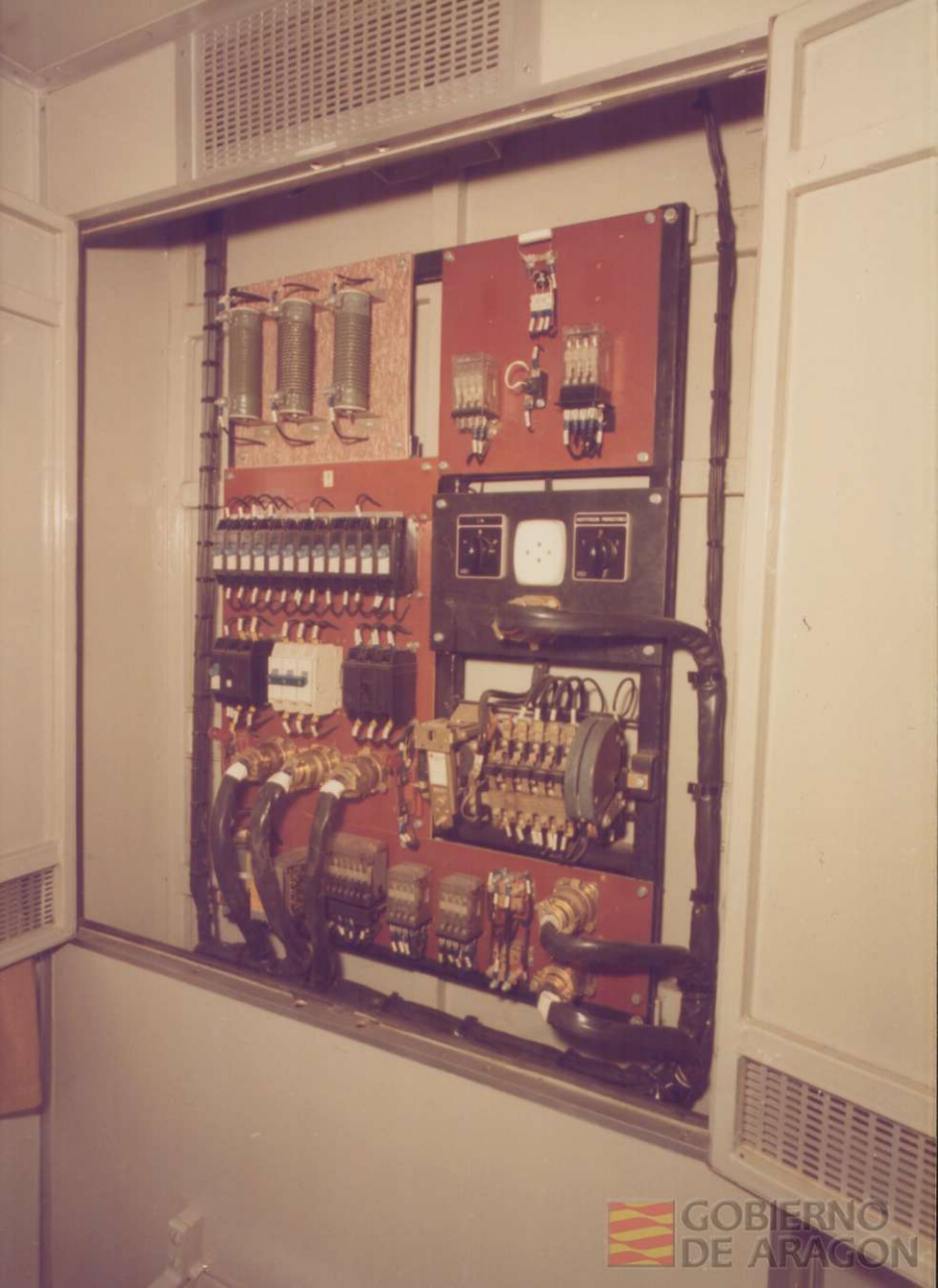


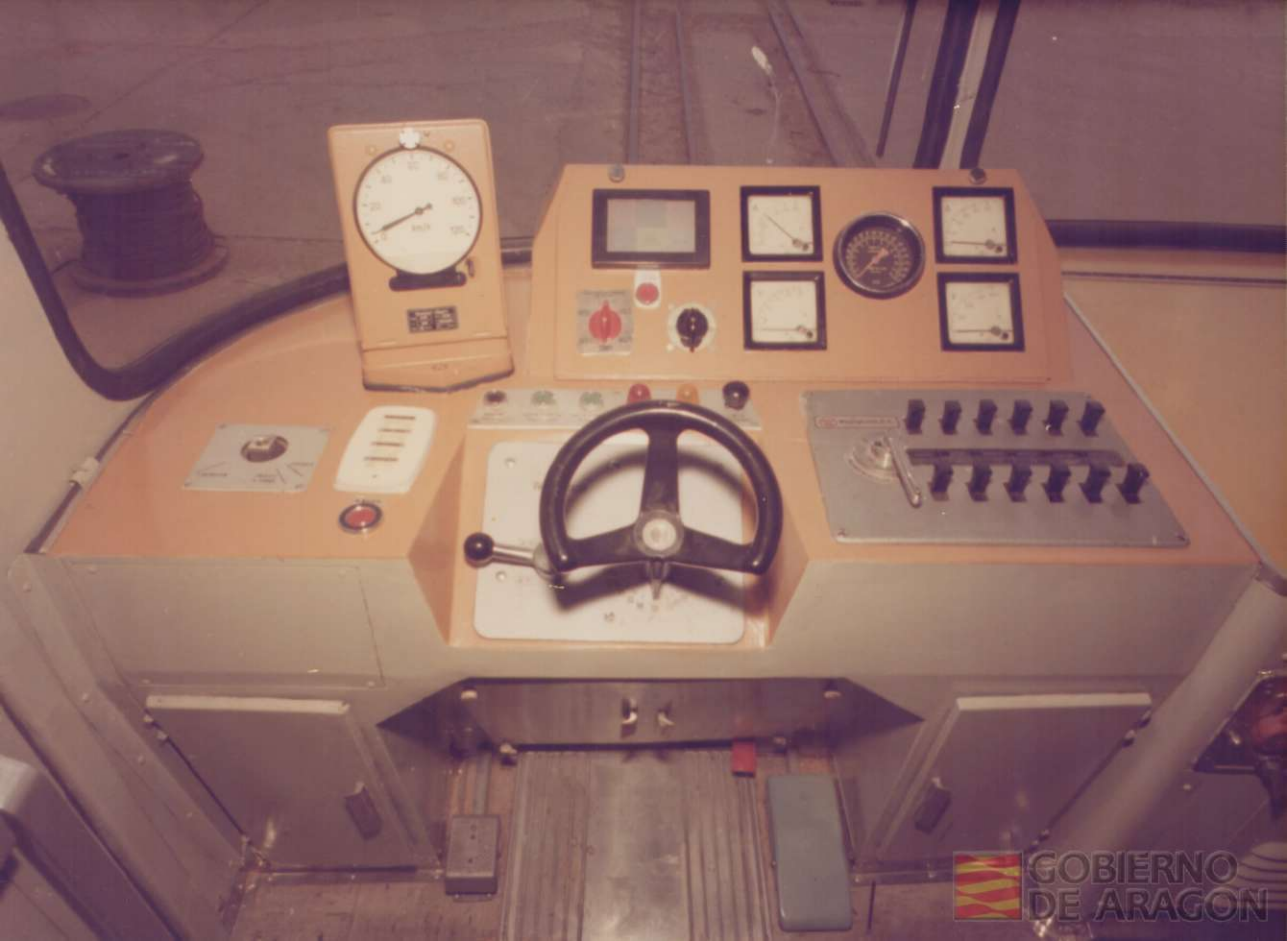




GOBIERNO  
DE ARAGON

























RENFE

CAF

8-441-0031



GOBIERNO  
DE ARAGON





RENFE

CAF

9-441-003-1



GOBIERNO  
DE ARAGON

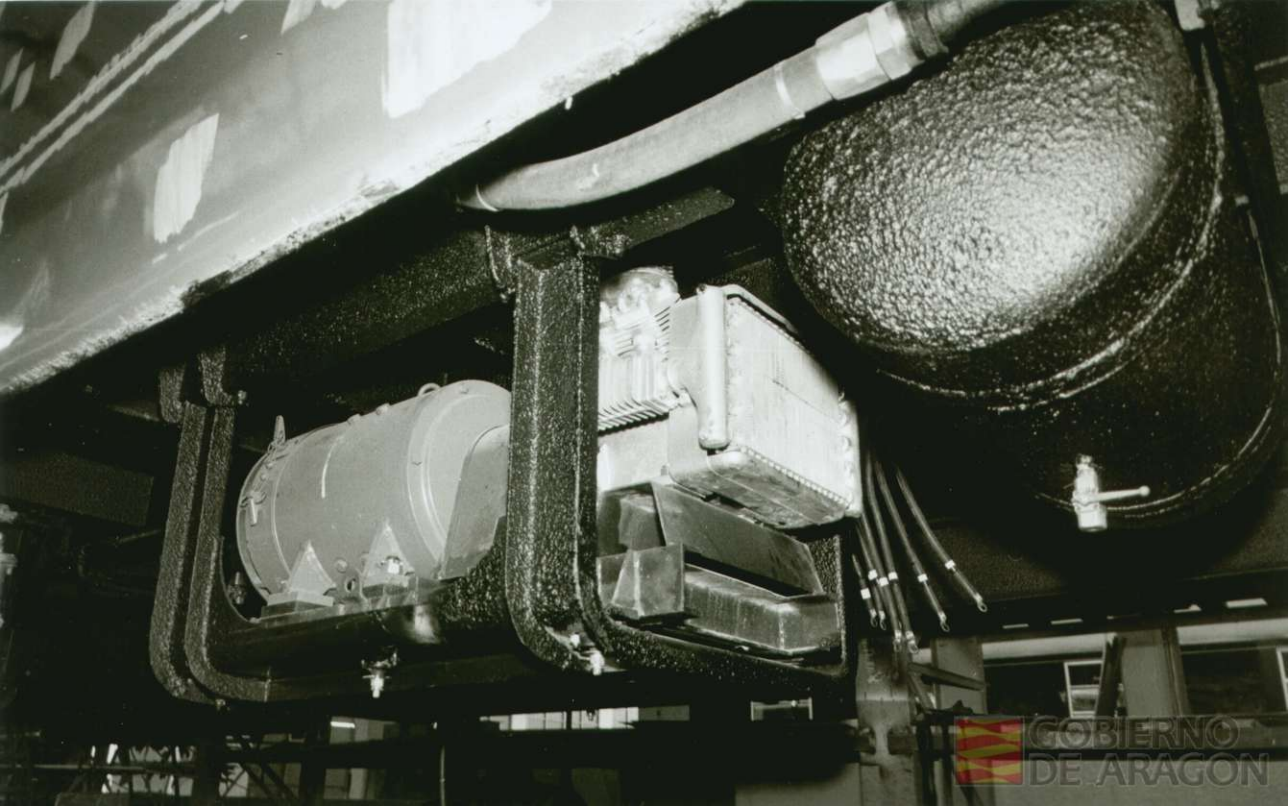




GOBIERNO  
DE ARAGON

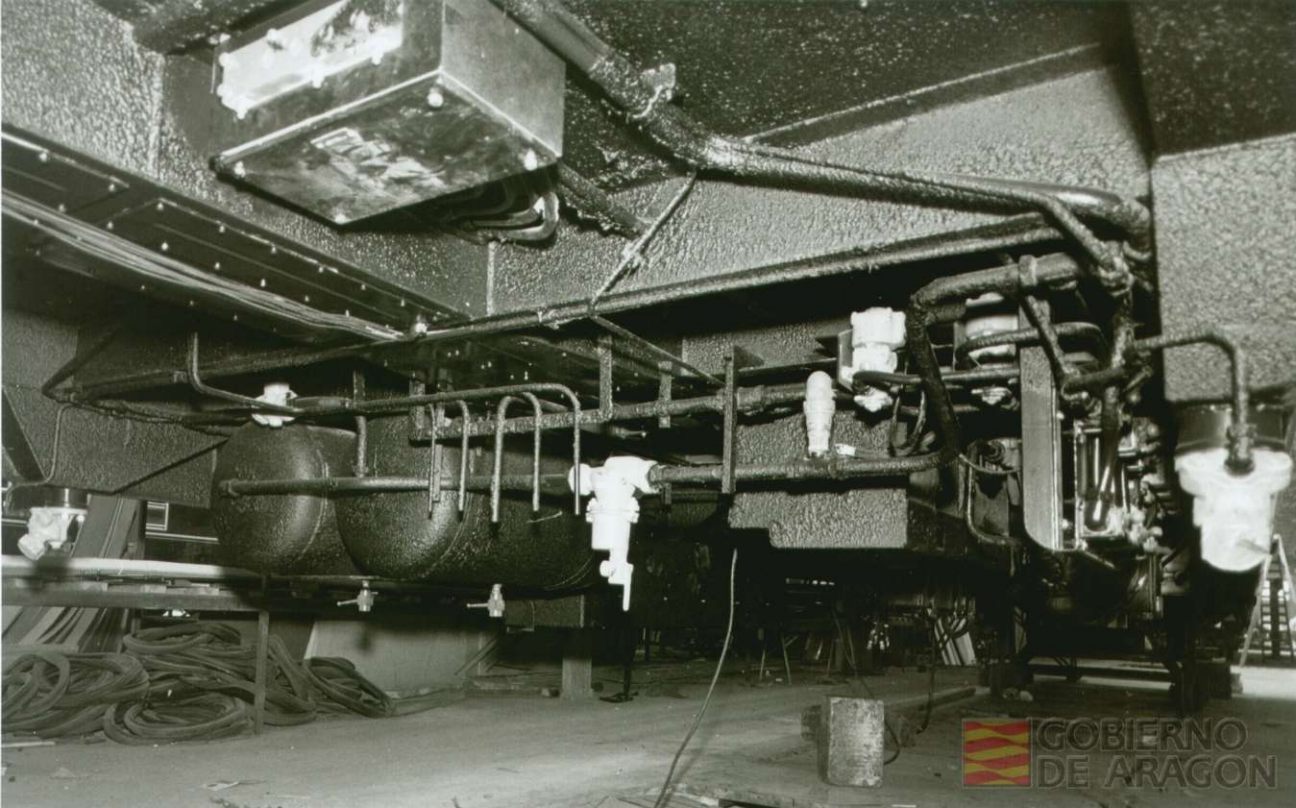


9441-005-6













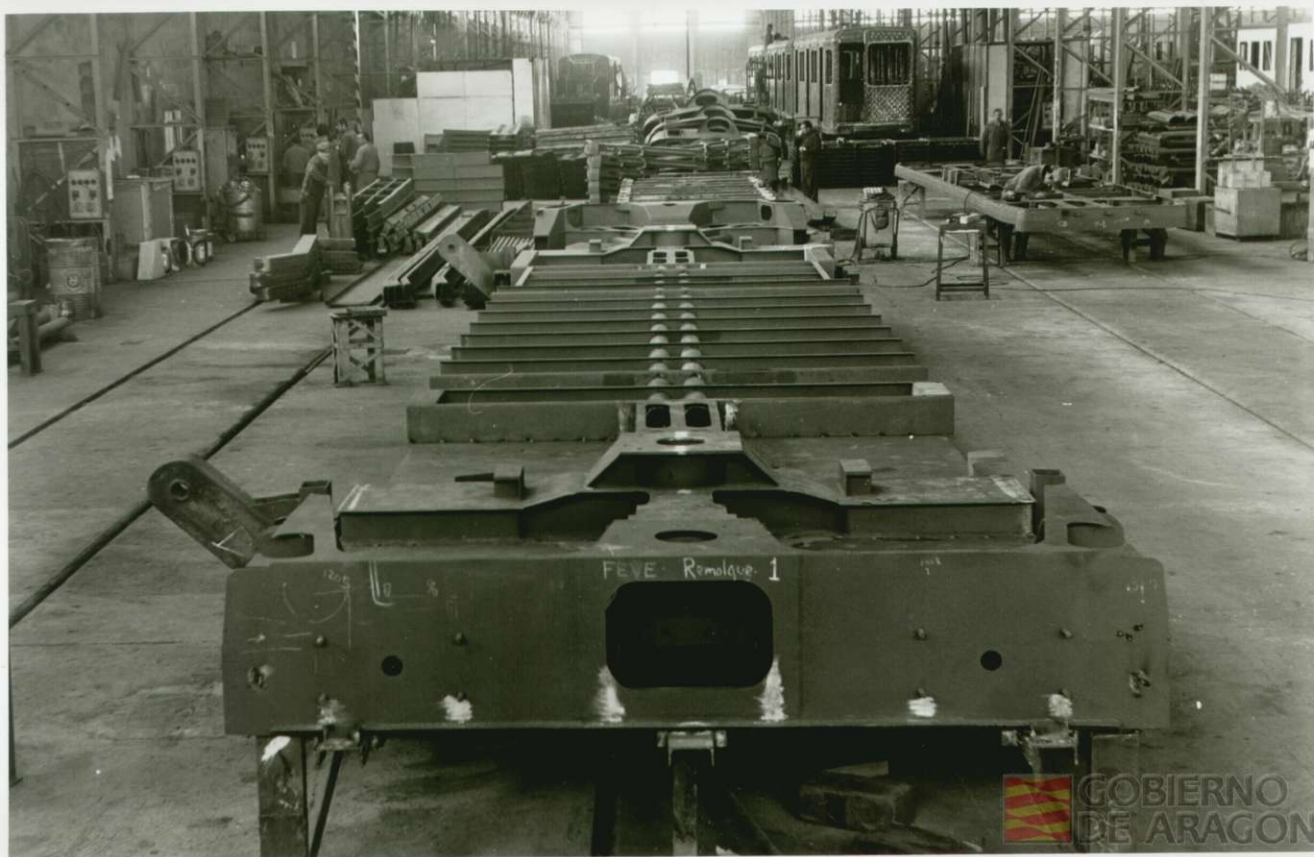
GOBIERNO  
DE ARAGON



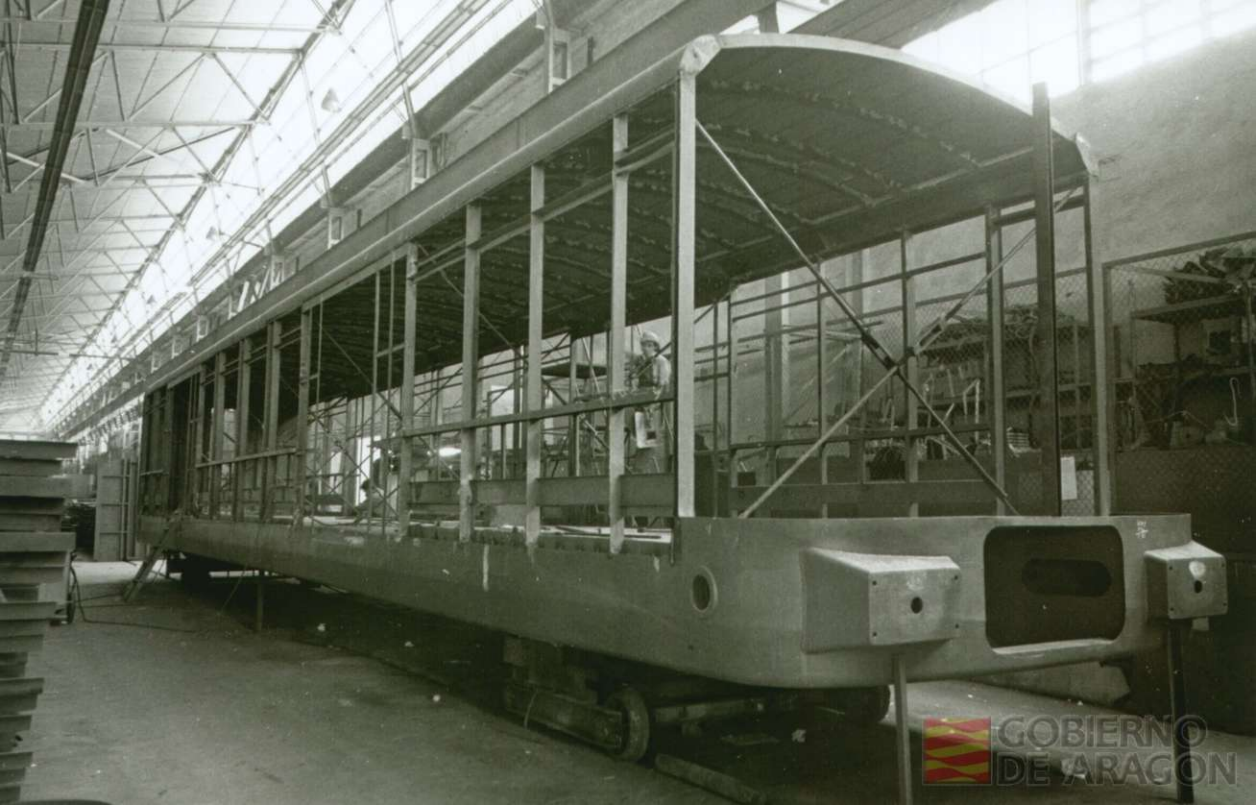
GOBIERNO  
DE ARAGON



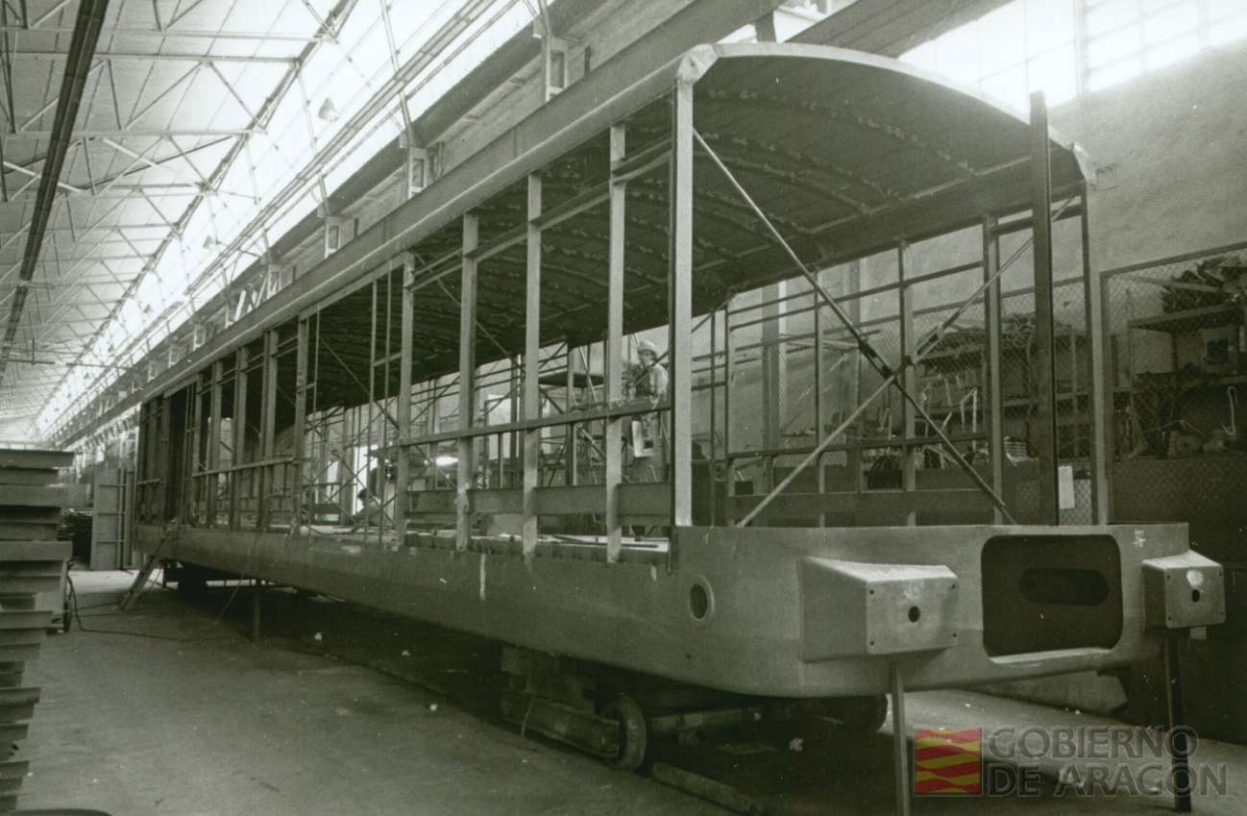
GOBIERNO  
DE ARAGON







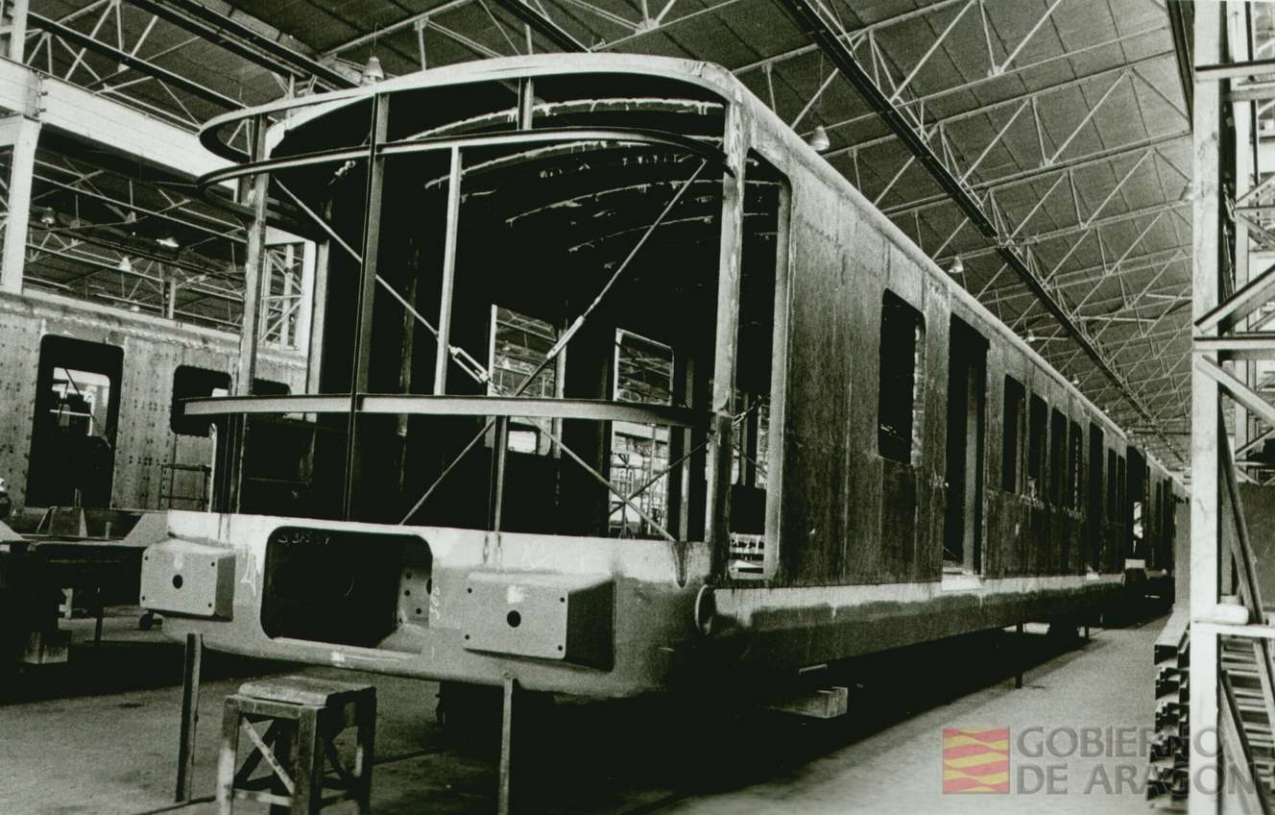




GOBIERNO  
DE ARAGON



GOBIERNO  
DE ARAGON







GOBIERNO  
DE ARAGON



STNS.

ADRIANO S.p.A.



GOBIERNO  
DE ARAGON



















GOBIERNO  
DE ARAGON







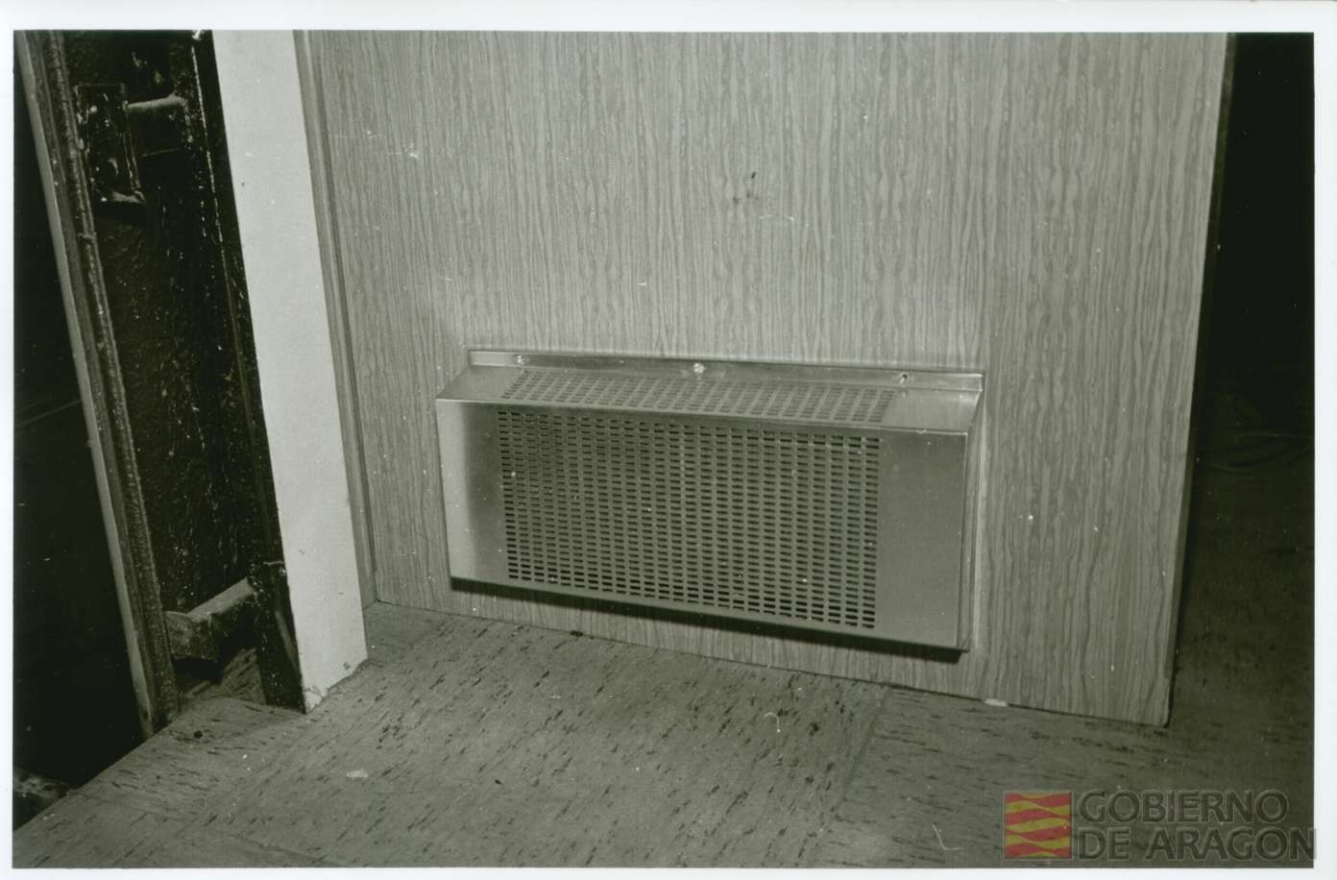




GOBIERNO  
DE ARAGON

24-30













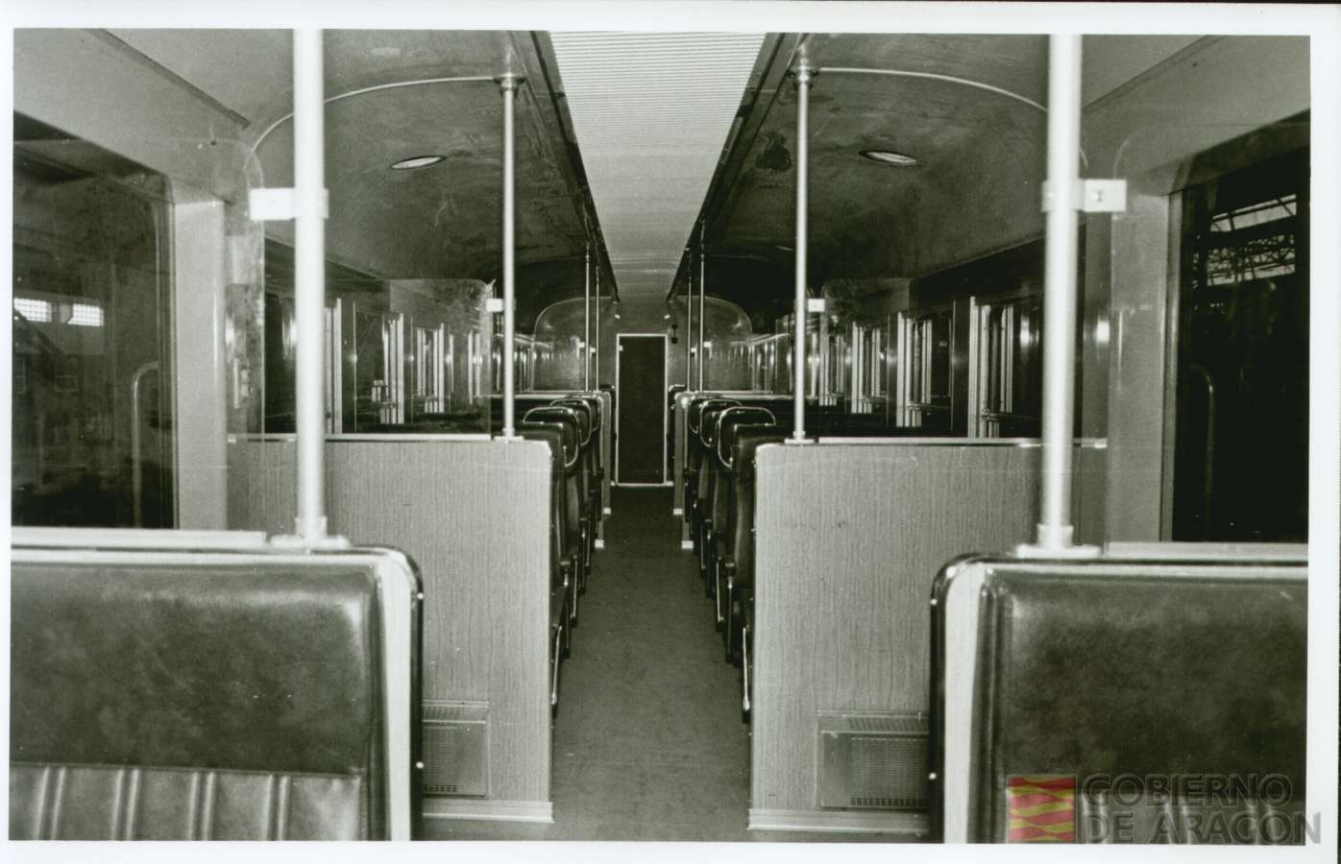
GOBIERNO  
DE ARAGON



GOBIERNO  
DE ARAGON





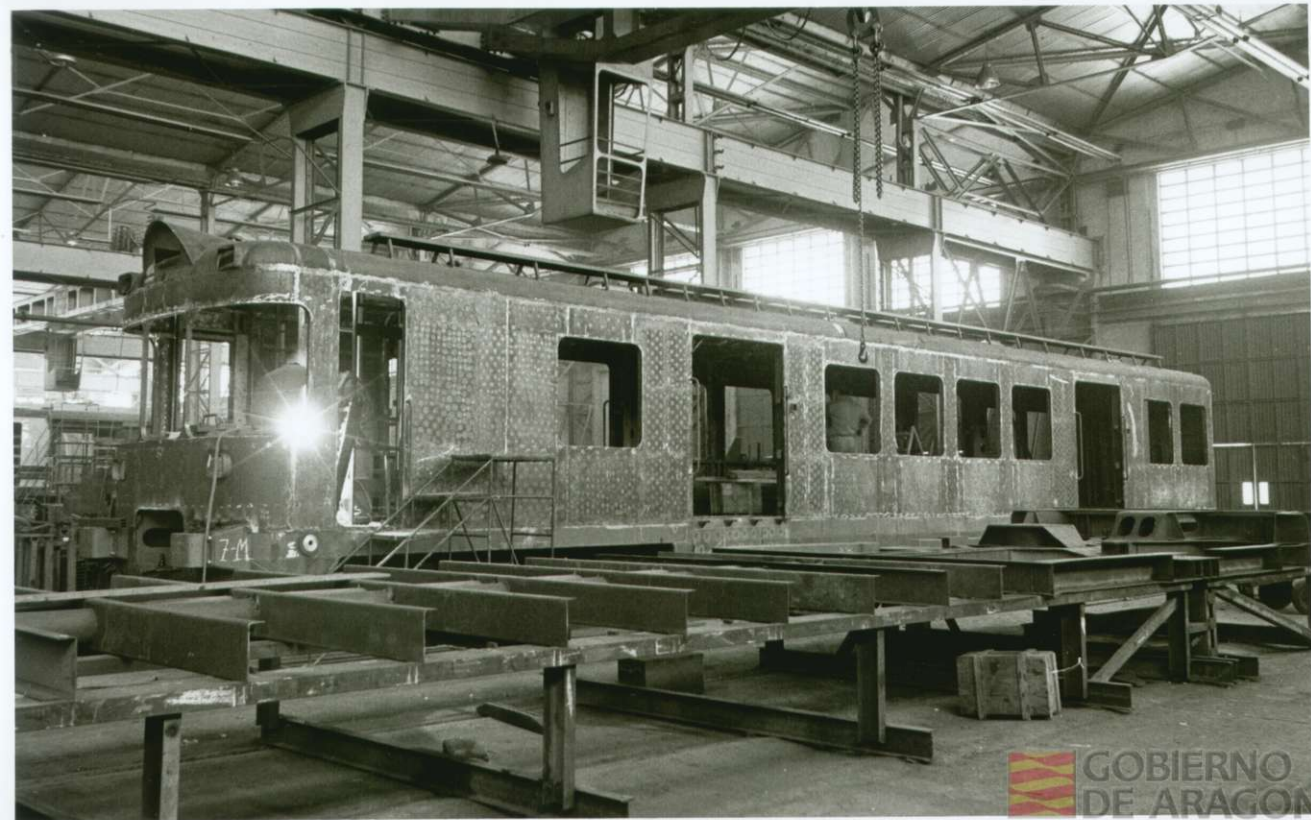


GOBIERNO  
DE ARAGON

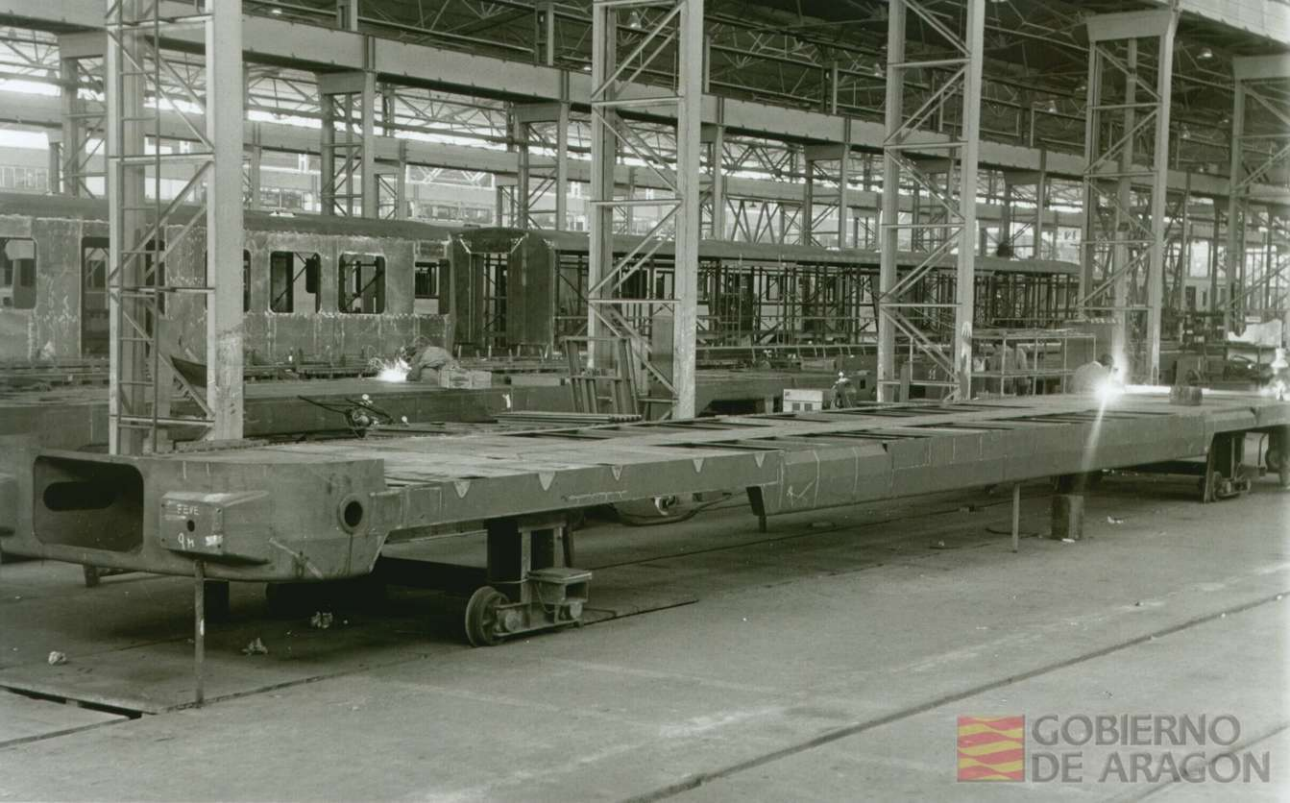












GOBIERNO  
DE ARAGON







