

planta de emplazamiento
 escala . 1:1000

irun junio 1933
 el arquitecto

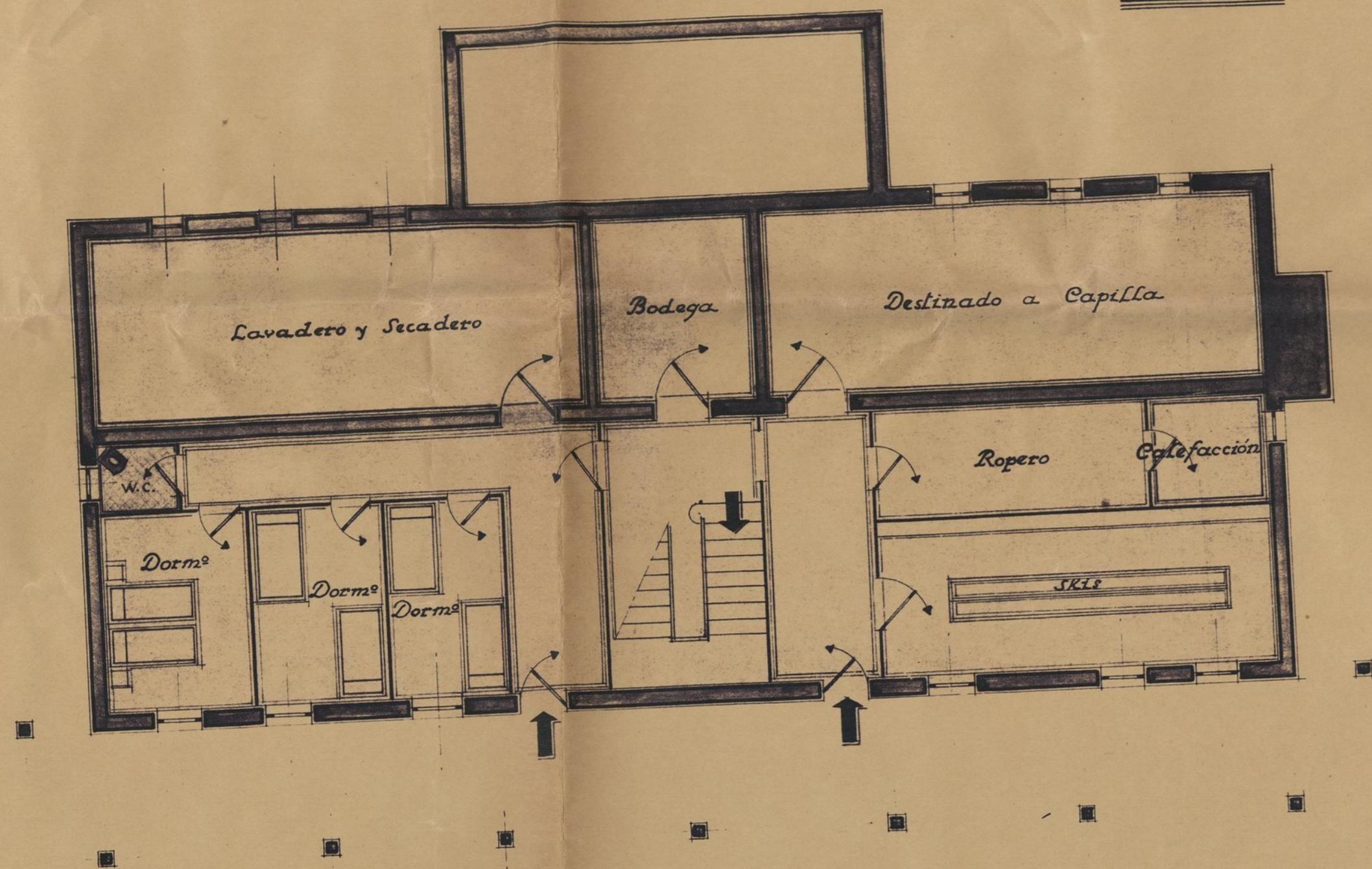
Salva
Arg.



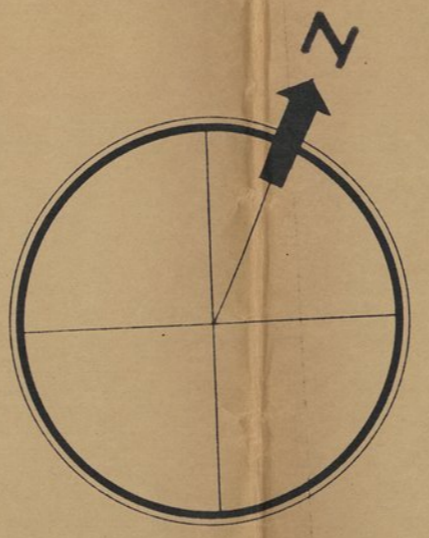
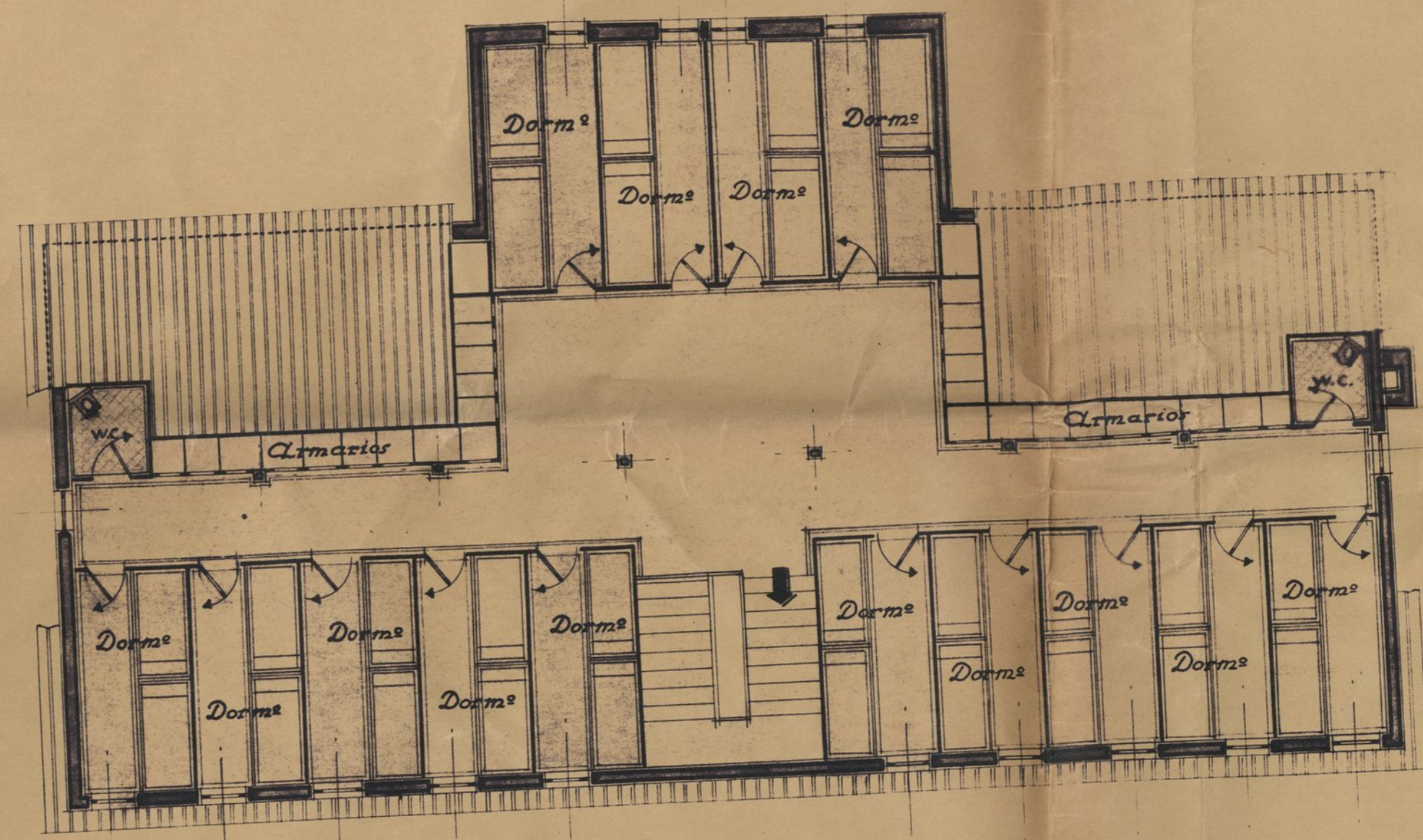
PROYECTO DE REFUGIO-HOTEL EN EL CANDANCHÚ (ARAÑONES)

escala 1:100

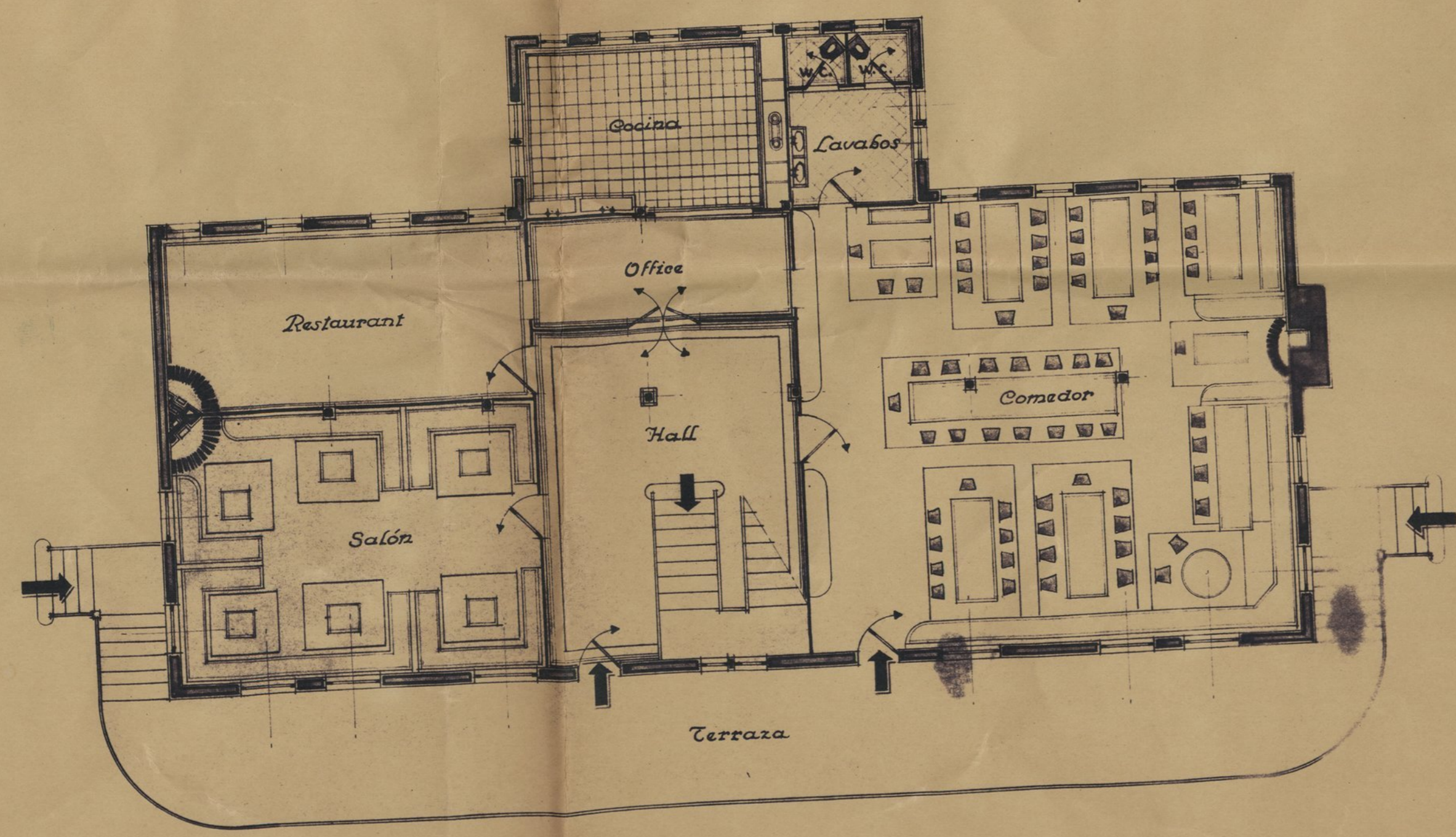
Planta Baja



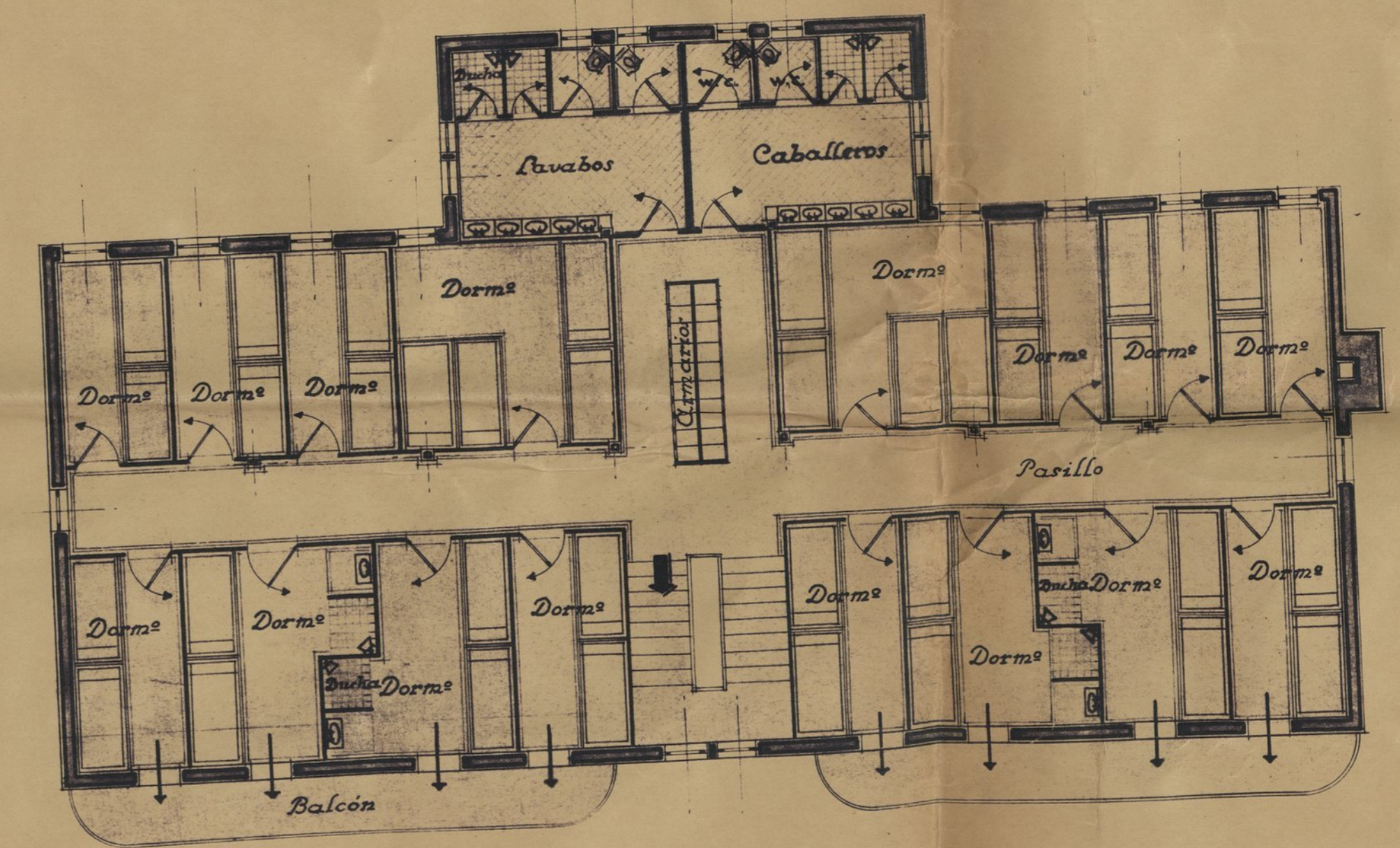
Planta 3ª



Planta 1ª

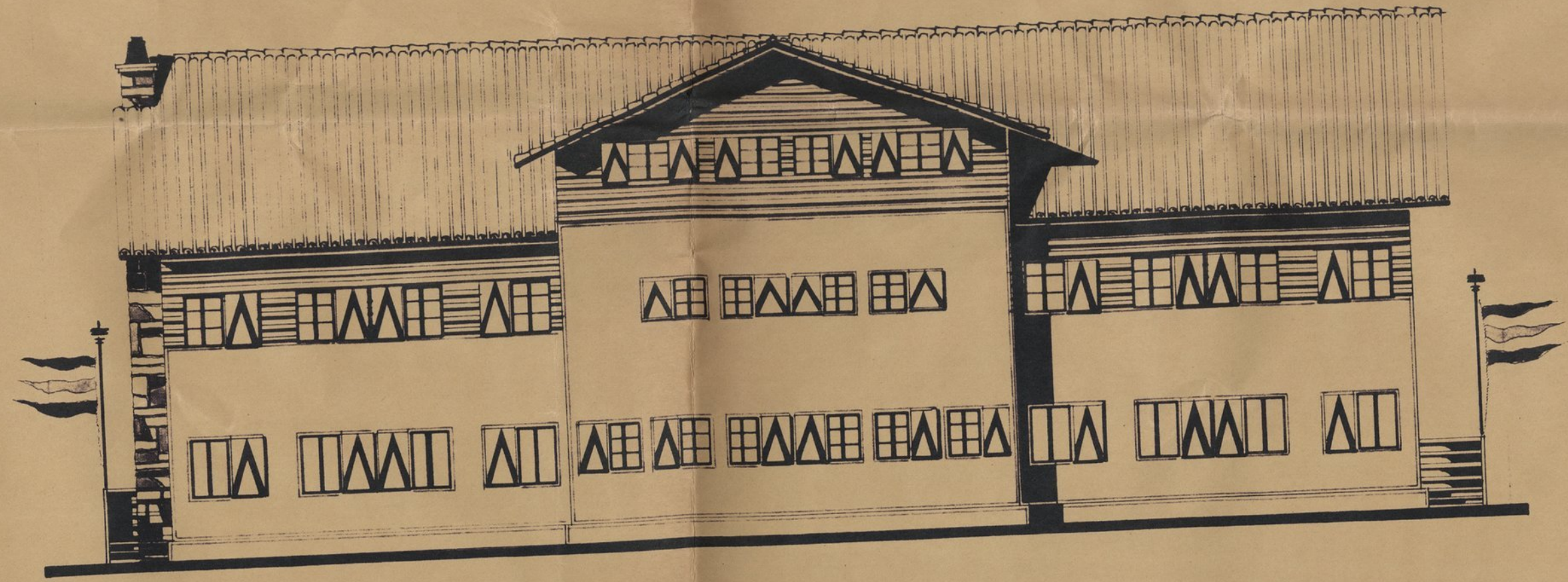


Planta 2ª

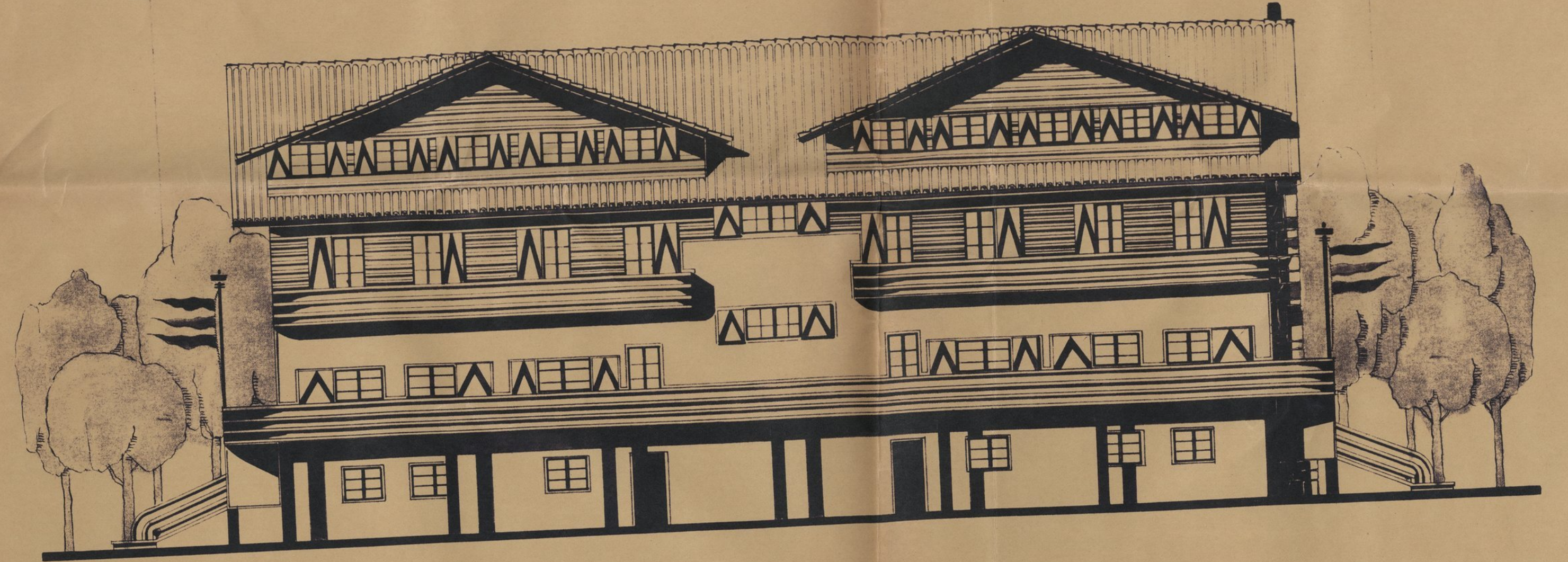


Mejor de 1933

Fachada Posterior

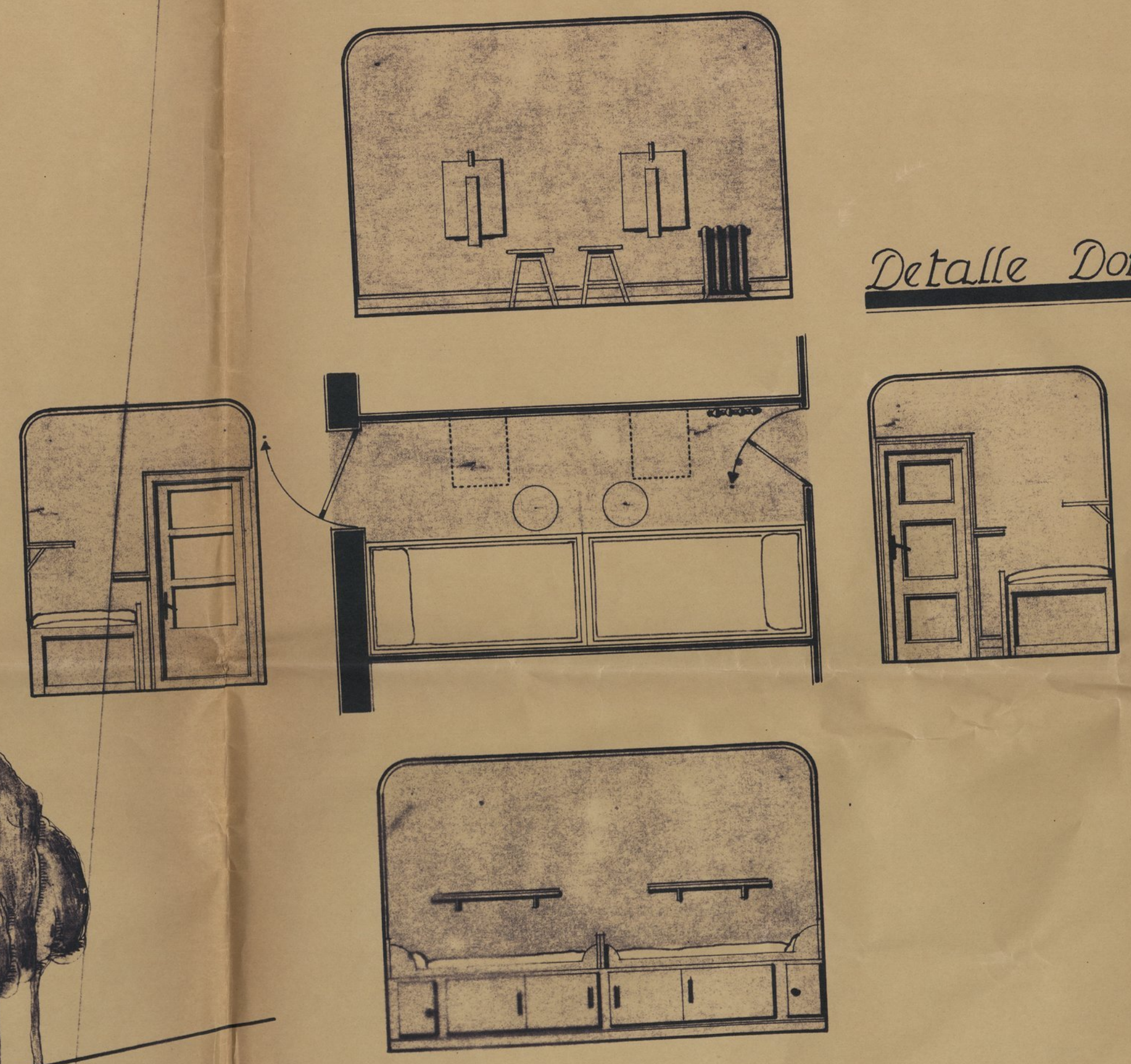
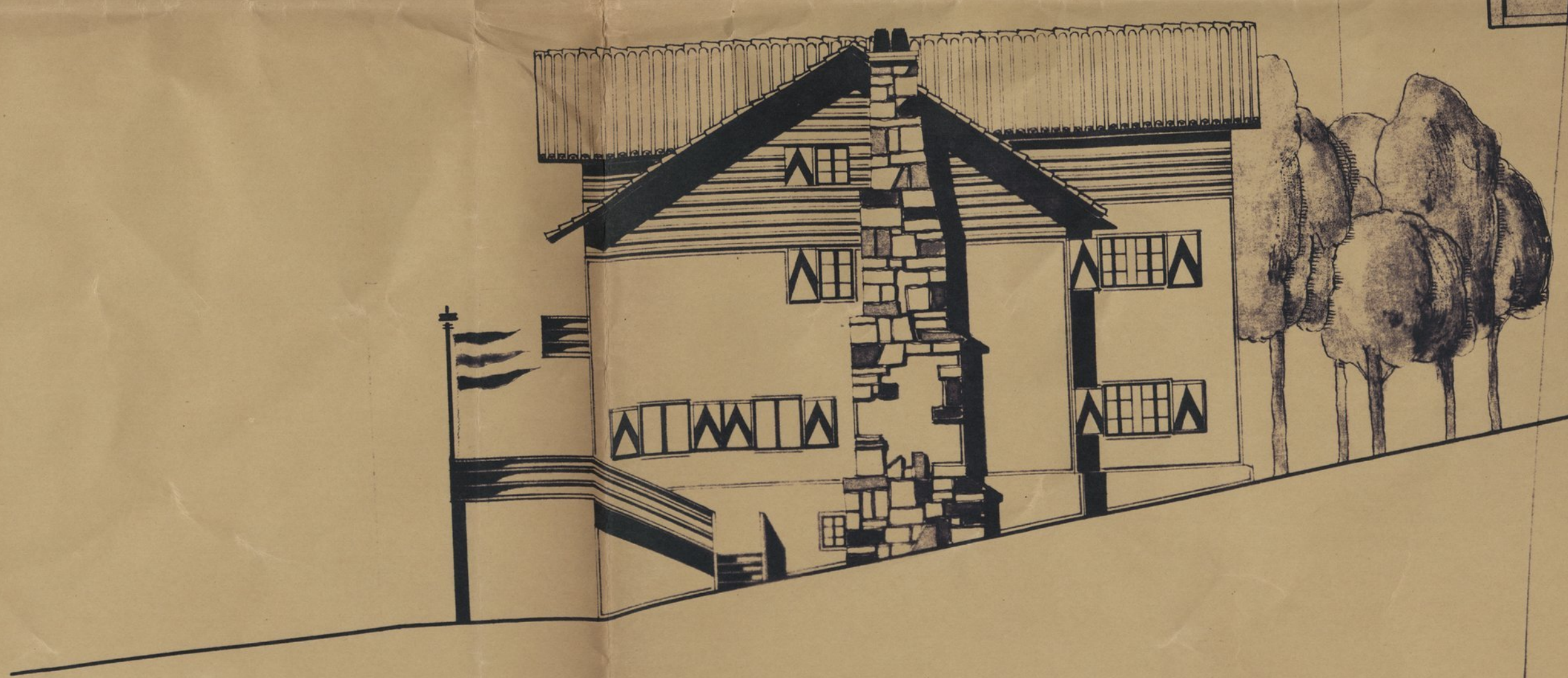


Fachada Pr^{ta}



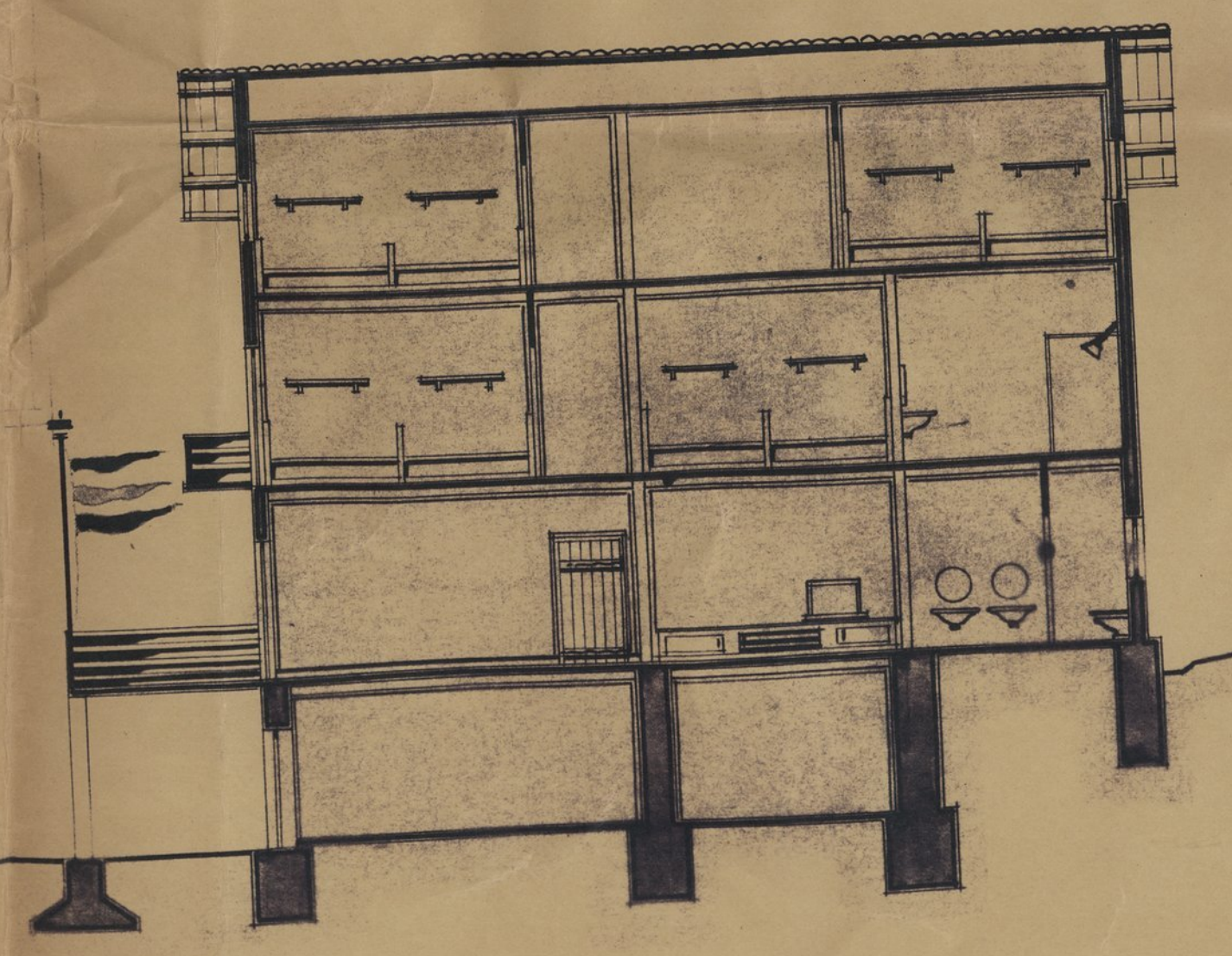
PROYECTO DE REFUGIO-HOTEL
EN EL CANDANCHÚ (ARAÑONES)
escala 1:100

Fachada Lateral



Detalle Dorm^o

Sección



Mayo de 1933