



P. Orange

Puñillo

A.P. Soria

S. Guillen

Ramoscar

P. Bartolito

P. Sevilla

P. Sta. Barbara

Tripa

Montera

Alcala de Juena

Sora

La Inmora

Guariso

S. Cristobal

Val de la Campa

Val de la Campa

Espejo

Callesas del Salvan

Pico Olivan

Val de la Inmora

La Campa

Estiba

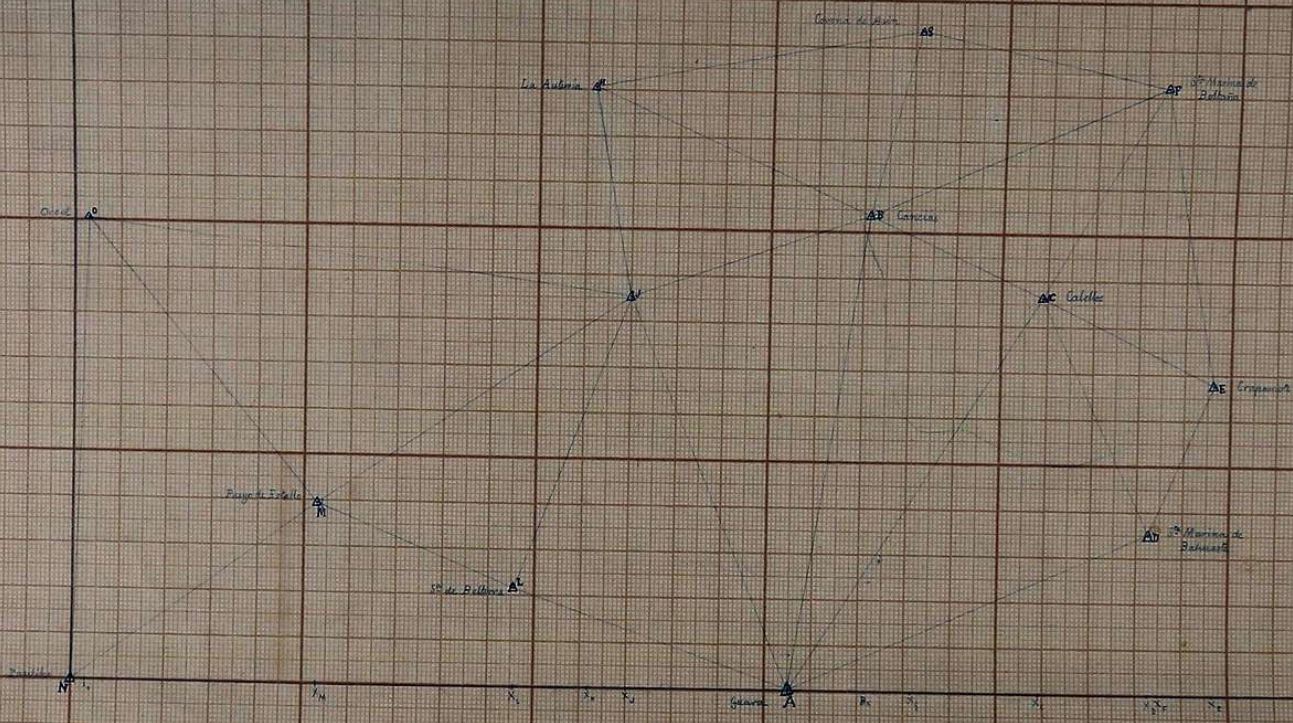
Pico Olivan

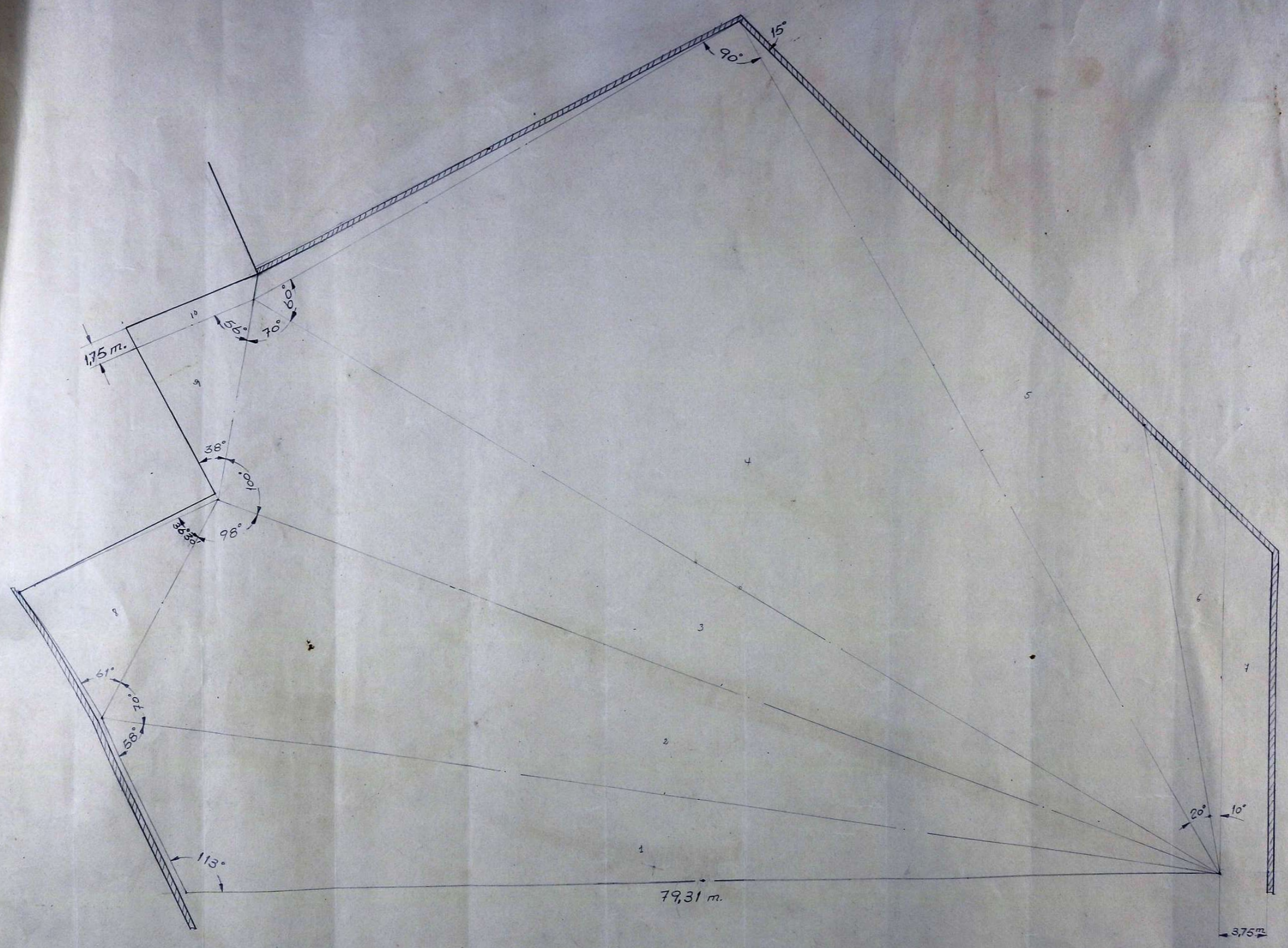
Pico Olivan

Caboda

Val de la Campa

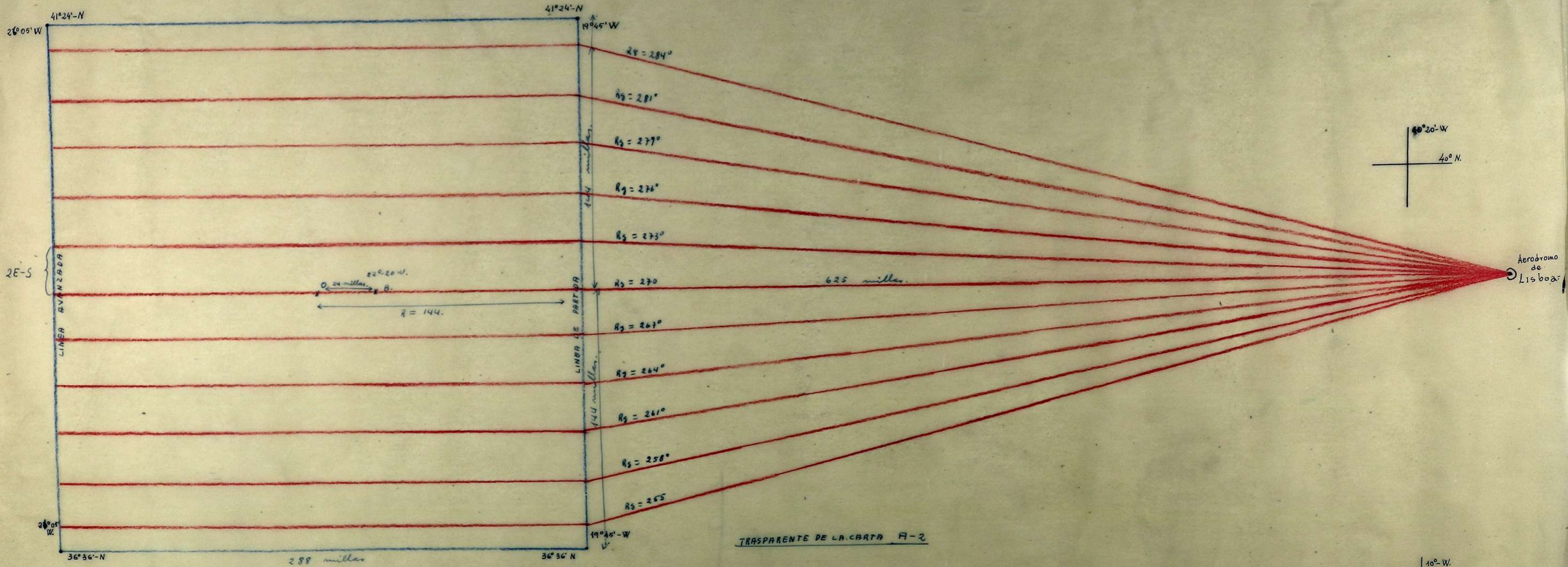
Paper prepared in accordance with the Catalogue of the Faculty of Sciences



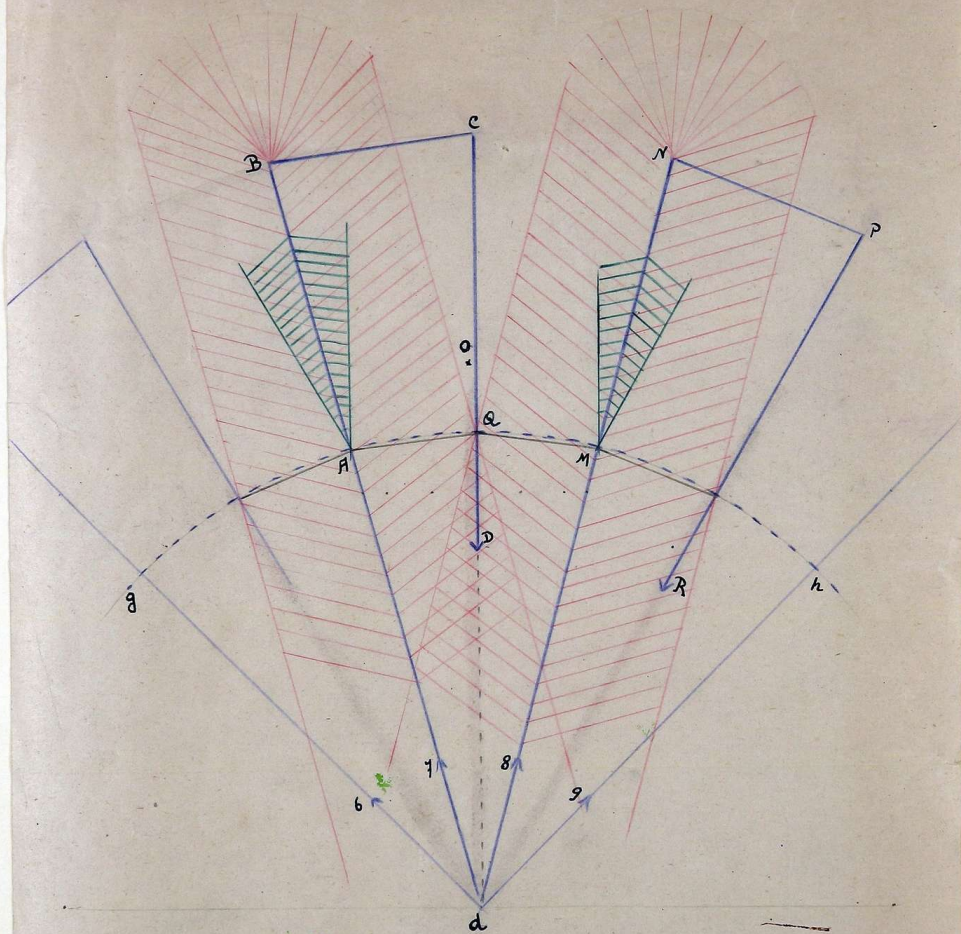


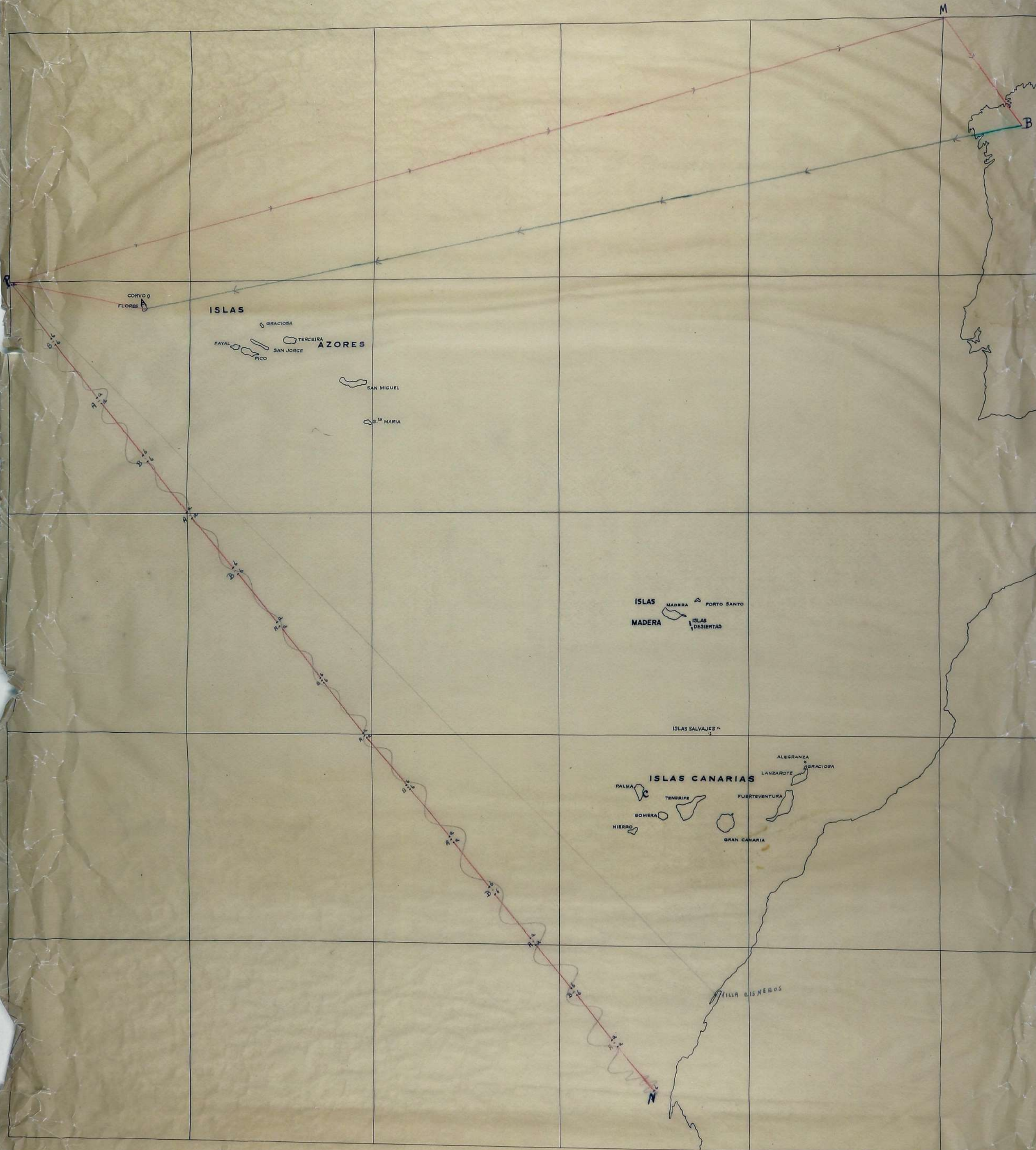


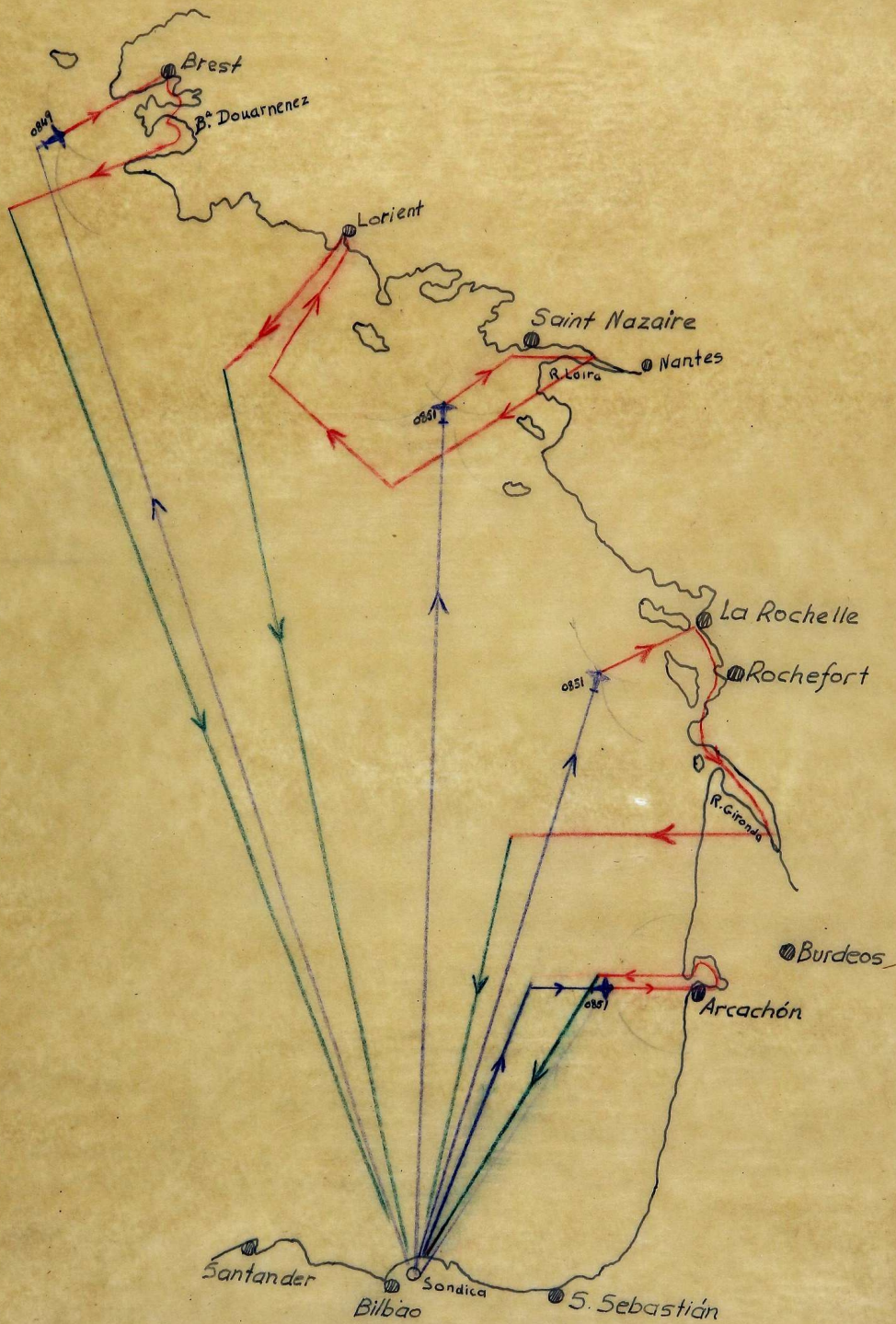
ALUMNO: COMANDANTE FUERZA AEREA PERUANA Fco. GARCIA ROMERO

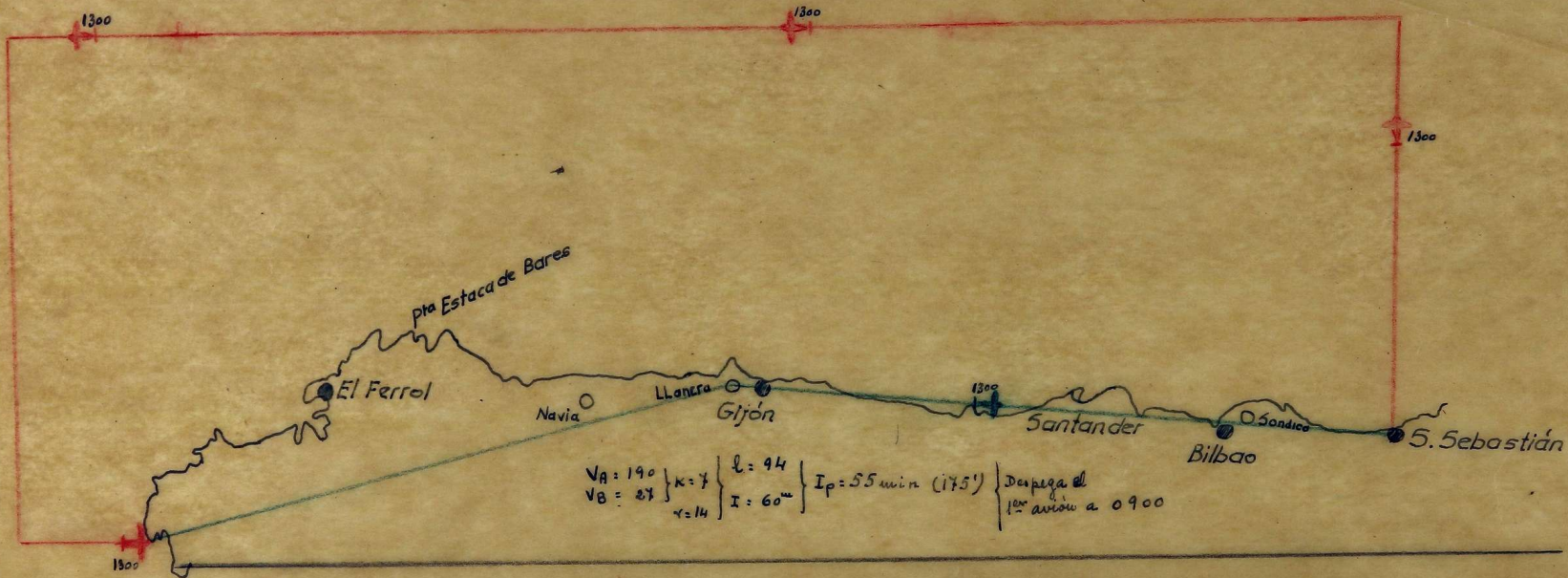


TRASPARENTE DE LA CARTA A-2









- ATAQUE TORPEDERO POR EL SISTEMA DE "ATAQUE POR POPA"

Datos

$V_{AB} = 30 \text{ nudos}$ ($V_A = 9/10 \text{ km} = 30 \text{ nudos}$)

velocidad = 200 nudos

$\alpha = 10^\circ$

$V_A = 400 \text{ km/h} = 216 \text{ nudos} = 112 \text{ m/s}$

Velocidades $A_1, A_2 = \frac{9}{10} 30 = 27 \text{ nudos} = 50 \text{ km/h} = 14 \text{ m/s}$
 $A_1, A_2 = \frac{8}{10} 30 = 24 \text{ nudos} = 44 \text{ km/h} = 12.4 \text{ m/s}$

En las tablas

A, A1

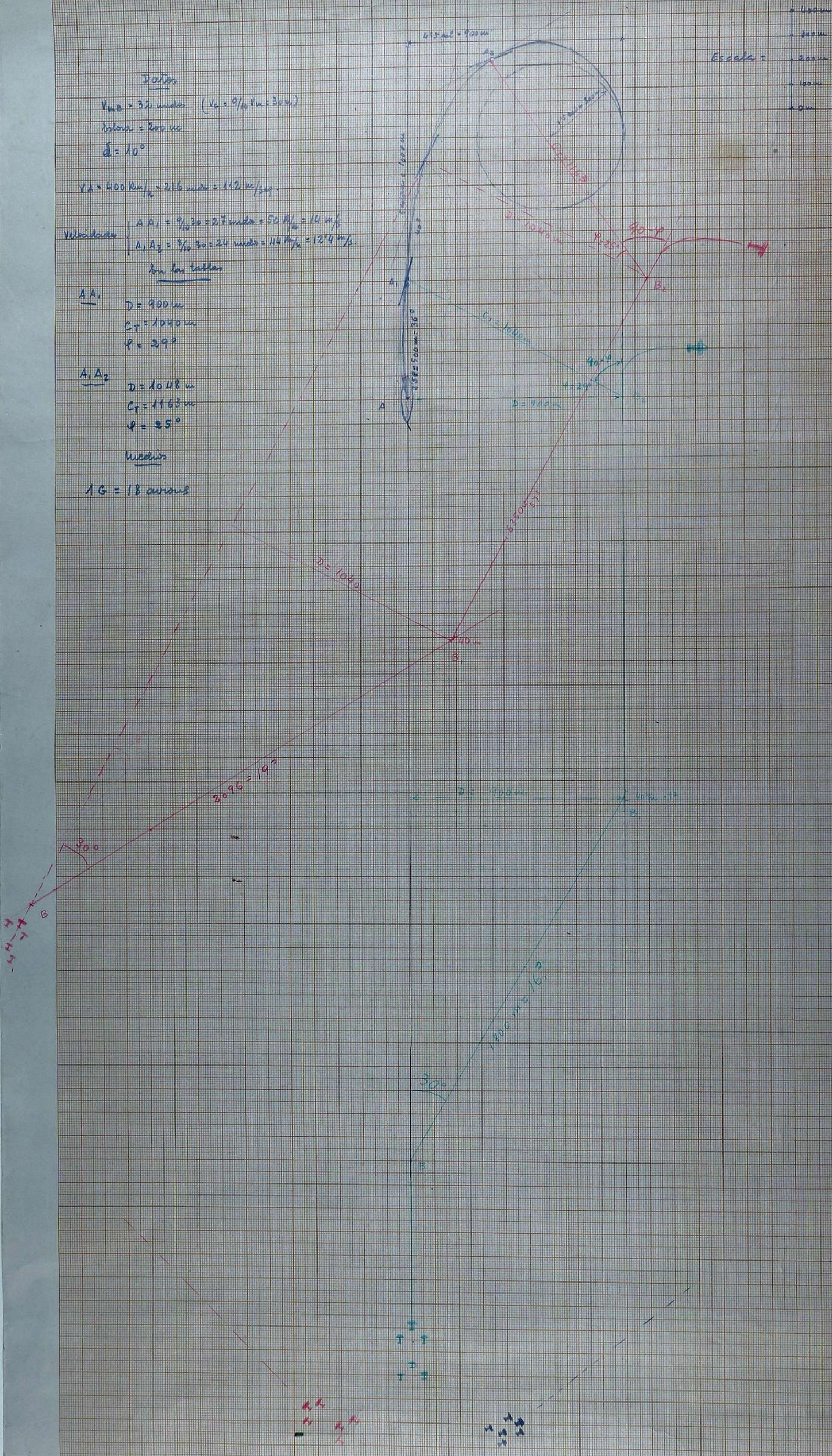
$D = 900 \text{ m}$
 $C_T = 1040 \text{ m}$
 $\varphi = 39^\circ$

A1, A2

$D = 1048 \text{ m}$
 $C_T = 1163 \text{ m}$
 $\varphi = 35^\circ$

Medios

$AG = 18 \text{ aviones}$



Inaquel Bayo Inquieta